

# Trow

THE OFFICIAL MAGAZINE  
FOR MEMBERS AND FRIENDS  
WORKING TO RESTORE THE  
COTSWOLD CANALS



NO 74 AUTUMN 1991 50 P

## COPY DATES

SPRING.....20th JANUARY  
SUMMER.....20th APRIL  
AUTUMN.....20th JULY  
WINTER.....20th OCTOBER

THE VIEWS & OPINIONS IN  
THIS MAGAZINE DO NOT  
NECESSARILY REPRESENT THE  
VIEWS & OPINIONS OF THE  
COTSWOLD CANALS TRUST

## Contents

Trust News	2
Field Officer's Report	4
Summit & Thames End Branch	5
Western Branch	6
Wallbridge Proposals	8
From the Archives, Whelford	9
The Move	10
Cotswold Canals Splash!	12
Trip Boats at Ryeford	13
Letters	14
End to End	15
Sales & Publicity	16
A G M Notice	17

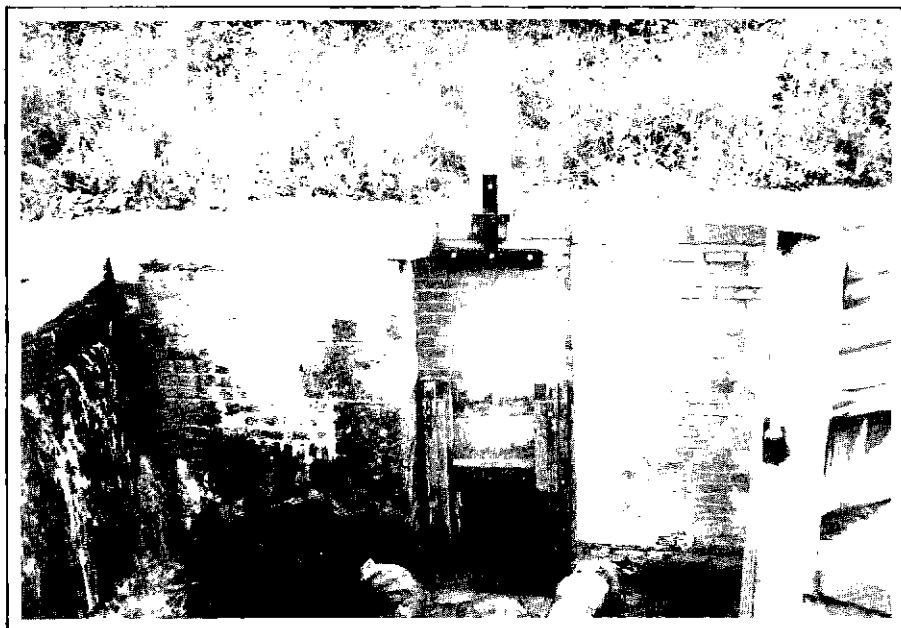
Published by the Cotswold Canals Trust

Compilation and Layout by David Jowett

Printed by Alan Mayo, Lewiston Mill, Brimscombe, Stroud, Glos.

FRONT COVER: Bond's Mill Bridge - a new focus for Trust attention?  
see report, page 2.

BELOW: Newtown Lock ground paddles under construction during the final  
stages of restoration to full working order.



# Trust News

---

## TRUST COUNCIL REPORT

At the time of writing, the moving of the plant site is well under way to its new compound next to the culverted Pike Bridge. Our aim is for the new compound to be a well ordered place which invites positive comments rather than a neutral response.

As reported elsewhere in this TROW, the date for the Cotswold Canals Splash has been moved back by one week to Saturday 19th October. Our original date, fixed some time ago, clashed with the recently announced Waterways Recovery Group Big Dig at Wantage on the Wilts & Berks Canal. We have been well supported by WRG with work camps in recent years so it seemed only fair to rearrange our event so that the Cotswold Canals Trust could give maximum support to this mega-event to celebrate 21 years of WRG. Our sales team and volunteers will be on site supporting the dig so come along to watch 500 navvies restoring this waterway or even lend a hand!

Frank Jones has been putting the finishing touches to Newtown Lock (Upper Nassfield to give its correct name!). By the time this Trow is published work should be complete and the lock fully functional. The finishing of Newtown Lock may seem to have been a drawn out process. However, due to the priority given to the compound move and other countless tasks, it was decided that volunteers had enough to do and that Frank Jones, who built the gates, should finish the job.

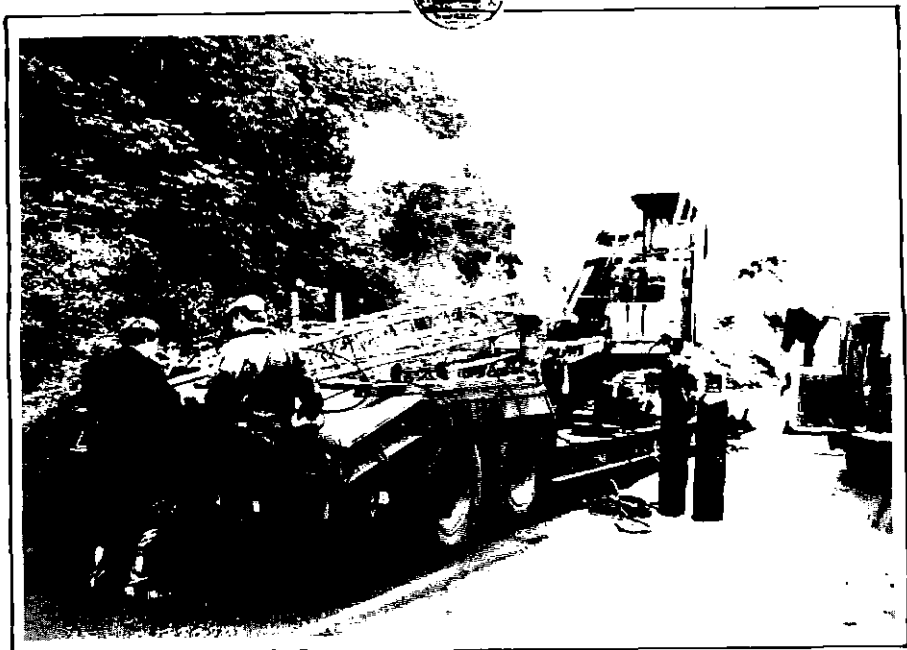
The Trust is currently seeking quotes for completion of the top gates at Blunder Lock and also the manufacture of bottom gates.

The Trust is now starting to examine replacement of Bond's Mill Bridge. Any member knowing anything about lift bridges, or where one exists that is designed to take a single track industrial access with a 17 ft span, please contact a member of the Trust Council.

The Priestman crane, having given a number of years good service, has been sold to a Mr Doncaster of Colchester who has plans to restore it. If we had kept the crane a considerable amount of time and money would have been required to get it back into safe working order. As there were no volunteers to do the work, disposal was the best option. The crane finally departed on a low loader for its new home early in June.

As a result of an advert in the last TROW, the SR1 diesel engine and some old lock gate timbers have been sold. A buyer has also been found for the roof tiles that were kindly donated by member John Sayle.

The new bridge over the canal at Dudbridge (pictured during construction in the last TROW) is now complete, leaving plenty of room on the offside to construct a new spill weir channel around the lock when restoration reaches that part of the canal. A pair of interesting plaques have been set into the structure by Gloucestershire County Council which give the bridge name, date of construction, and depict a Trow. The towpath under the bridge is now open again after a number of years and has been cleared by Trust Chairman and Deputy Chairman with the aid of a machine similar to an Allen motor scythe.



The Priestman crane is loaded up ready for transport to a good home and restoration in Colchester.

---

## Surveys Published

---

We are pleased to report that two surveys on the Stroudwater Navigation are now available to members.

The **W. S. Atkins Report** covers the canal from Saul Junction to the Ocean at Stonehouse and is available at a cost of £18.00 plus 60p towards postage.

The **Stroudwater Wildlife Survey** was undertaken by the Gloucestershire Trust for Nature Conservation and costs £10.00 plus 60p towards postage.

Both reports are photocopies of the originals and the Atkins study especially is a bulky but interesting read. Please send your orders to Chris Jones, The Courts, 27 Walton Road, Clevedon, Avon, BS21 6AE.

# Field Officer's Report

---

Field Officer KEN BURGIN

The second and final phase of the Halcrow study is almost complete and copies of the report will be circulated to the local authorities, the NRA and the canal landowners when it becomes available. It is expected that members will be able to purchase copies through the sales stand in due course and its main conclusions will be published in the TROW.

Planning permission has been granted for a golf complex adjacent to the canal at South Cerney. Cerney Park Ltd., the developers, have agreed to let the Trust restore the canal in their ownership. The length in question runs from a point a little upstream of Wilmoreway Lower Lock to the road at the bottom of the infilled South Cerney Locks with the exception of a short length at Boxwell Spring Lock. The overall length is just over a mile and the Trust has carried out work downstream of Boxwell Spring Lock in the past. The Trust looks forward to working with the developers and hopes the restored canal will form an enhancing feature within their project.

The rush for gravel is on! The papers have reported that the Co-operative Wholesale Society (C.W.S.) are about to apply for permission to extract gravel throughout the length of the route of the Latton Bypass - that is from Latton to the Spine Road. The Trust has tried to persuade the Co-op on several occasions to allow us to restore this length of canal, without success. It is an important length in that Cerney Wick Lock falls in its centre and the canal itself is in reasonable condition. The Trust feels that the Co-op should be prepared to put something back into the environment (the canal!) if society is to allow them to take millions of tons of gravel out of it.

I have heard from Halcrow that the engineering consultants working on the Latton Bypass design have been asked by the Department of Transport to set up a meeting to discuss the Canal Bridge for Latton. Whilst this is no guarantee that agreement for the bridge will be forthcoming, it is a positive sign that it has become an issue worthy of consideration. More news when we have it but a decision will have to be made soon.

Now for some more good news. The North Wilts Local Plan is being put together and both the Wilts & Berks and Thames & Severn Canals feature in proposed policy TM5. It is worth quoting part of the statement issued for the Public Inquiry by N.W.D.C.:-

The restoration of sections of both canals is being actively pursued by landowners and amenity groups alike, and the eventual long-term aim of restoring all or most of the lengths of both canals is supported by the District and County Councils, including support in the form of grants towards work on the restoration.....

The proposed policy TM5 expresses support for restoration and puts in place a formal planning framework aimed at protecting the canals from further damage and encouraging schemes designed to develop their recreational potential. Strong policies like this are very helpful and our thanks go to the officers and councillors along the whole length of canal who have the courage and vision to express them.



---

Now to the western end of the canal where the battle of the M.O.D. pipeline continues unabated. When all the quotes came in, the incremental cost of putting the pipe under the canal turned out to be £34,000 within a scheme costing 2.5 million. In spite of all the advantages to the M.O.D. of having a pipeline safe and out of sight (and up to N.A.T.O. standards), it is still insisted that there is no money to pay for it. Contact is being made with the Secretary of State for Defence, Tom King, through some good friends of the Trust, in a final attempt to achieve common sense. Time is running out to make the 1991 programme, but I hear that the pipeline is to be shut down again next year for more work - so better luck next time!

---

## Summit & Thames End Branch

---

Report by ROBIN HALLIDAY

The accent of Branch activity this quarter has been on Tunnel Boat Trips, since the weather has been considerably wetter than the last two summers. It's an ill wind that blows canal restoration no good! However, the rain has meant a good growing season making towpath clearance hard work.

The heavy rain began at the end of April and was recorded by the media as the heaviest for some six years. In any event water levels in the tunnel rose from 1'10" to 3'0" at the start of May. This was timely, for the trip boat was to host a Japanese film crew who were in this country to make a film about the River Thames. Although we were prepared for filming, it was quite a shock when Trust Chairman, Bruce Hall, was asked to speak directly to camera as an introduction to the film. Members who missed the film when it was shown in August may not be too disappointed when they realise that they would have had to travel to Tokyo to see this piece of film history!

Tunnel Boat Trips continued at weekends through to the beginning of June. The level was then 1'3" which continued to fall till the end of the month. Then, fresh heavy rain restored the level to 2'5" which allowed public trips on June 30th and two trips for Tetbury Round Table on the evening of July 1st - the latest trips in the year we have ever run. High water levels have also been accompanied by heavy weed growth in King's Reach but the tunnel remains clear as usual.

The Branch hosted two towpath clearing parties. In May, a party of Scouts from Hanwell, London, did a first class job, clearing scrub in the King's Reach and at Cerney Wick. In June Waterways Recovery Group (BITM section) paid us a visit for more clearing at Cerney Wick and Coates Roundhouse.

On the social side, Jim King and John Nixon organised a very successful Barbecue at the Roundhouse on July 14th. The Trust "Turfor" winch was put to good use removing more Blackthorn stumps. Slowly, the Roundhouse garden looks less like a wilderness although much work still remains to be done to the Roundhouse itself. Incidentally, the Thames & Severn Roundhouses were the subject of an article in the August issue of "Canal & Riverboat".

The End to End walk takes place in September and it is rumoured that the Branch will be well represented. We hope to undertake further towpath clearance before the event. Can you help?

---

# Western Branch

---

Report by KEN BAILEY

Two building tasks have been completed since the last report. The first was spurred into life when Bruce Hall suggested that we ought to think about getting quotes to finish the front half of Meadow Mill spill weir. Like a red rag to a bull I decided that with a serious effort, a small group could sort out the job. With Steve Court, John Ferris, Bill Evill and my parents, the two remaining damaged arches and the complete front wall were rebuilt over a couple of weekends and one Thursday evening. Next we hope to reinstate the towpath to its original line over the weir.

The second construction project was carried out almost entirely by John Ferris who cleaned back and reconstructed the spill weir outlet just below the workshop at Blunder Lock.

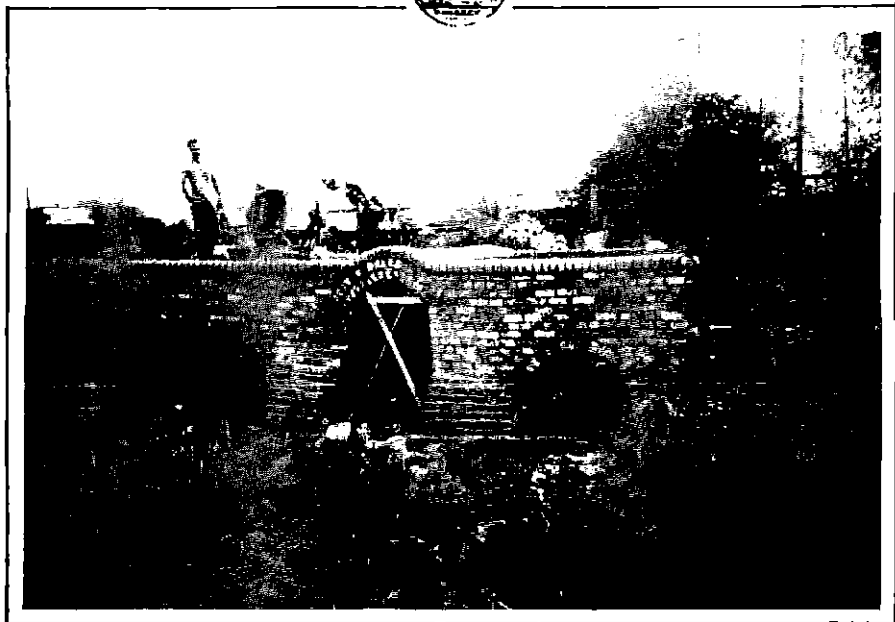
Work on the International Excavator has progressed well, between bricklaying tasks, with the old paint work being scoured down before repainting and anti-vandal covers being manufactured for the windows.

I put the excavator to work digging on the site of the new slipway just above Pike Lock. Within the space of a couple of hours a ramp towards the canal bed was formed. Unfortunately, I ventured too far through the bank and instead of being on firm bank, I sank rapidly into soft silt. The canal at this point is not vee shaped in cross section, it is rather flat-bottomed with steep sides - too steep to back out!

After much cursing on my part and digging by hand up to my knees in mud I finally got the machine to move, but exit from the canal seemed impossible. With the arrival of Ken Burgin on the scene, it was finally decided that help was needed. Tim Wyatt, a new member and also local farmer, was contacted and within a very short time appeared with his four-wheel drive tractor and a length of chain. Suitably hitched up and in bottom gear he gently eased me and one very muddy excavator out of the canal bed seven hours after getting stuck! Thank you again Tim. It took me a whole day using the pressure washer to remove the mud.

Since then, Steve Court has been at the controls of the excavator continuing the slipway work. He also had a slight mishap when the main hydraulic hose, from the pump to the ram controls, decided to blow, rapidly emptying the contents of the reservoir tank on the ground. A new hose was obtained the following day and the machine restored to working order.

We have again suffered a number of attacks by thieves and vandals over the past few months. One door of the dredger was forced open by some criminal who was probably looking for batteries - we don't leave them on the plant! Newly laid brick treadways laid by Newbury K&A work party were damaged even before the cement was dry. Two different sets of teenagers who were attacking the Meadow Mill weir were frightened off by Mr & Mrs Cook who live just across the canal. Finally, someone has broken into the old compound at least twice, forcing a locked shed door although nothing appears to have been stolen.



ABOVE: Splendid brickwork completes the canal side of the spill weir.  
BELOW: Another sticky moment for the excavator at the new slipway site.





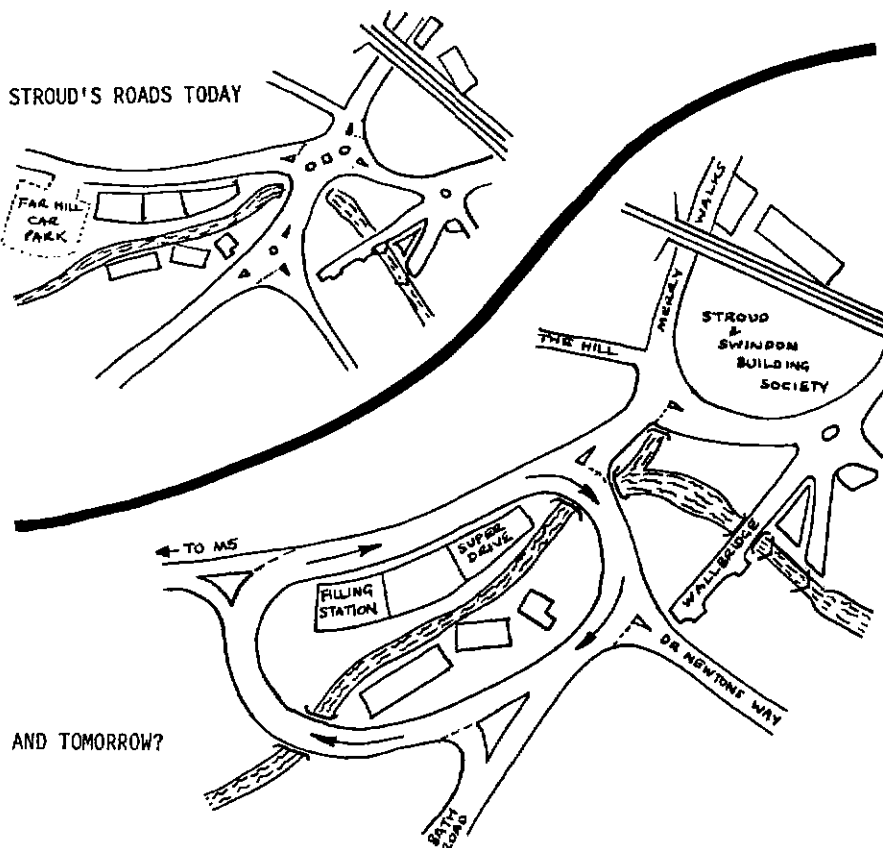
# Wallbridge Proposals

Report by RICHARD ATTWOOD

The Trust recently submitted a letter to Stroud News & Journal suggesting a solution to the traffic congestion at the Wallbridge end of the new East/West Bypass, Dr. Newtons Way. The Editor of the newspaper considered it sufficiently important to make a feature article of the letter.

The proposal would make a major contribution towards restoring navigation along the Cotswold Canals by replacing the infilled canal at the A46 with two bridges by the creation of a very large roundabout/one way system.

The advantage of this proposal will be to remove the double and single roundabouts on the A46 and expose the Slad Brook, which presently flows into the canal under the A46 junction to form a feature of a newly landscaped area. A further benefit of the scheme would be to complete the excellent work started by the Stroud Valleys Project to enhance this very visible entrance to Stroud, by the restoration of Upper Wallbridge Lock.



# From the Archives



The year is 1931 and this is not a canal. The photograph was sent in by member John Sayle and shows his house sitting alongside the Whelford Feeder. This channel drew water from the River Coln near Fairford, taking it almost two miles to feed the five mile pound on the Thames & Severn Canal between Eisey and Dudgrove.

John informs us that the building glimpsed in the background was the Queens Head Inn and that the row of thatched houses, "Myrtle Cottages", are now demolished leaving only the tiled structure standing. Although taken in 1927, four years after the abandonment of the section of canal it was meant to feed, it is thought that the channel was still being used at the time to convey water to cattle at Ham Hill.

Today the scene is very different. In the background the road now skirts the perimeter fence of Fairford Airbase.

## The Clothiers Arms

1 Bath Road . Stroud . Gloucestershire

Resident Proprietors  
Luciano & Aline Magalotti



Telephone Stroud (0453) 763801

Free House

# The Move

Report KEN BAILEY

The most significant progress recently at Eastington has been the final agreement on the new compound (see map in Spring '91 Trow). Bisley Fencing were given the go ahead to start the perimeter fence in the middle of May and completed the work in two weeks.

The following weekend saw the start of the move by transporting some of our more mobile equipment to the new location. The newspaper store was emptied for the last time and together with the tool store was dismantled ready for transportation. A general tidy up took place around the new site, trimming the verge and hedge back, and clearing the outer parking area.

The next weekend saw the two sheds re-erected on a surround of railway sleepers in their new locations. The weather, typical for early summer, was cold and wet which meant that refelting the roofs was out.

A 16 ton load of ballast was ordered during the week and delivered for the next stage. Bases were duly laid within the buildings on Saturday as the rain continued outside! A relatively dry Sunday enabled another base to be laid, ready for the garage.

We were now able to start moving the contents of the buildings, aided by our Treasurer, his son and Bill, a new member. Despite even more rain (not my idea of mid June) we carried on soaked to the skin, shifting tools, our stock of engines and spares. With the garage finally empty, it was dismantled and moved to its new home where it was reassembled.

By the time you read this, the old compound should have gone and a new home suitably sorted out. Thanks go to those who came along and helped the move happen, despite the poor weather during the early stages.

## *Stroudwater Cottage*

Available for Weekends  
Midweek Breaks Longer Lets

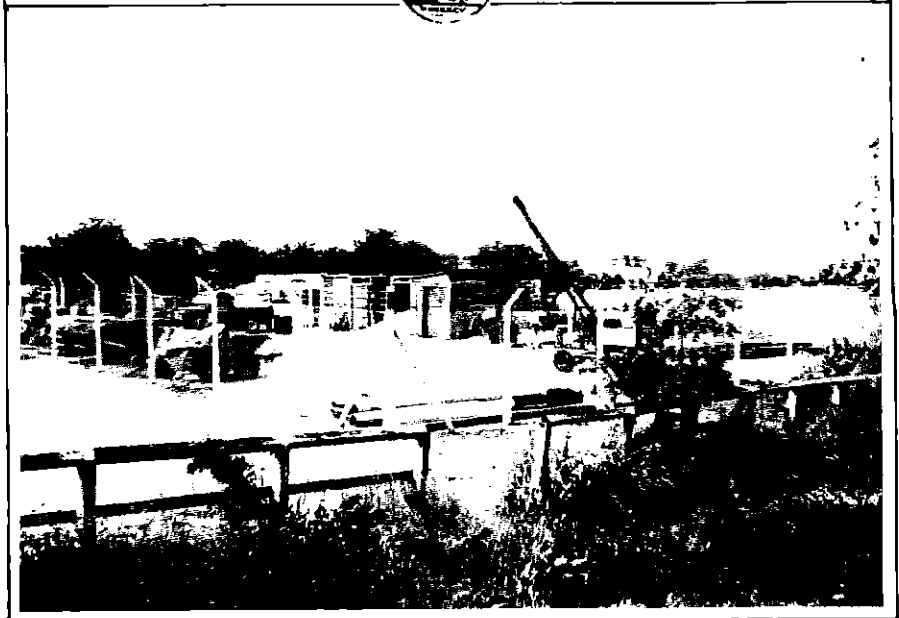
Very Well Appointed  
Sleeps 4/5



Close to the Canal near Stonehouse

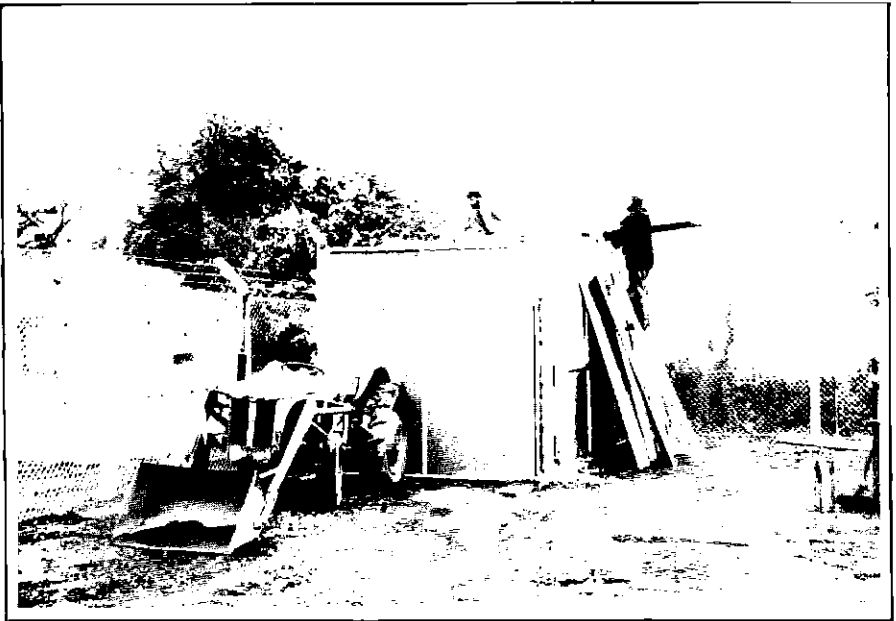
Telephone 0455 611508  
for details

A DONATION TO THE TRUST WILL BE MADE FOR EACH BOOKING RECEIVED AS A RESULT OF THIS ADVERT. PLEASE MENTION THE TROW.



ABOVE: The new site. The towpath is in the foreground. The photo is taken from Pike Bridge.

BELOW A shed is erected in the corner of the new plant site. Hard work!



# Cotswold Canals Splash!

---

Make a note of the new date in your diary for **SPLASH 91** - a new look event to replace the Open Day of previous years. The new date is 19th October.

Bring your canoe, dingy, inflatable or small boat and for a small fee take part in the **COTSWOLD CANALS SPLASH!**

Starting at Blunder Lock, paddle your way to Ryeford Double Lock and back. Help will be on hand for portage around Newtown Lock, Stonehouse Railway embankment and the Ship Inn road crossing. At the end of your round trip, you will receive a certificate.

Start at any time between 10.00am and 12 noon for this non-competitive event. Children must wear life jackets and be accompanied by an adult.

On the land there will be guided walks, side shows and other events to make this a day to remember. For more information write to FREEPOST (GL65), P.O. Box 71, Stroud, Glos. GL6 7BR.

---

## For Sale

---

Contact **KEN BAILEY 0272 601710**

Approx 1800 "Major's Patent" roof tiles

Approx 35 old lock gate timbers - sound, very hard timber

Dorman Three cylinder diesel engine (Ex Priestman Wolf Crane engine)

Petter AVA1 Single cylinder engine requires some parts

Deutz V6 Aircooled Diesel - Ex dredger (requires new bigend bearings)

Various Landrover Series II parts

Readers may be interested in a course which has been organised jointly by Chippenham Technical College and IWA Avon & Wilts Branch.

The course, an "Introduction to Inland Waterways" which commences in January 1992 at Chippenham Technical College, will run for 10 weeks on Thursday Evenings to include three Saturday Day Trips.

Information and Booking Forms can be obtained from Tom Welham, Adult Education Manager, Chippenham Technical College, Cocklebury Road, Chippenham, Wilts.

# Trip Boats at Ryeford

---

## Trip Boat Co-ordinator **AMANDA FISK**

With the Summer boat trip season at Ryeford now half way through, it seems a good time to reflect on events so far.

The season got off to a good start, having cajoled a number of Trust members into signing up as crew for as many Sundays as they could manage. Around April members had only to venture outdoors and a boat trip rota was thrust into their hands whilst they were off-guard.

The weather has varied from brilliant sunshine to torrential rain when volunteers spent a very wet afternoon on the boat sheltering under Ryeford Bridge. Volunteers have enjoyed good feedback from passengers and walkers who were pleased to see boats back on the canal. They enjoy the trip between Ryeford Double Lock and the skew bridge but all want to know when boats will be able to go further!

Crew members have also enjoyed steering the boats, especially the three-point turn at each end, and telling the public about the canal. Much wildlife has been in evidence including kingfishers, nesting moorhens and a young family of swans (pictured in the last TROW).

Children especially enjoy the trips. Indeed it is difficult for parents to keep their little hands out of the water as they reach for reeds and point at ducklings.

This enjoyable pastime is also profitable, raising over £600 to late July. The last trip this year will be on 29th September. Thank you crew, for the hard work so far. Lets hope the sun keeps shining!

## Model Member

---

We have recently heard of a novel project being planned by one of our members, Derrick Dudden. Derrick plans to undertake a sponsored walk of several hundred miles along the towpaths of the canal system. The unusual thing about this walk is that he plans to steer a radio-controlled model narrowboat alongside in the canal at the same time.

Derrick is a keen modeller and has already built the  $\frac{1}{2}$ " to 1ft scale model of a Samuel Barlow butty and named it "Patience". All that remains is to fit an engine and radio-control.

Sponsorship will be sought by Derrick, both from business sources and individuals with perhaps a "Guess the Mileage" competition. The Trust would be the beneficiary of all proceeds.

We will print more details as they become available but in the meantime please contact Derrick at 26 Durban Road, Patchway, Bristol, BS12 5HQ (Tel:0272 697370).

---

# Letters to the Editor

---

Dear Sir,

## **IWA/WRG Charity Bank**

I am writing to thank all those readers who responded so generously last year. We raised over £2,000 in 1990 against a target of £1,250 and have now raised over £3,500 in the last three years.

Please continue to send Green Shield (old and new), Co-op, Blue Chip, Pink, Look, Cash, Premier Gold, Supersave, Nationwide and all other types of trading stamps; Texaco, Gulf, Mobil, Shell, BP, Esso, Fina, Elf, Heron, Total, Burmah, and all types of petrol vouchers; Air Miles, cigarette coupons, silver foil, aluminium can and ring pulls, cigarette cards and all denominations of used postage stamps to:- **IWA/WRG Charity Bank, 6 Spa Lane, Hinckley, Leics., LE10 1JB.**

This is a permanent request which will continue indefinitely. Our target for 1991 is £2,500!

David Stevenson, National Chairman, Inland Waterways Association

EDITOR'S NOTE:- You may hand in your coupons and stamps at Trust events. They can then be sent on in bulk to the IWA.

---

## Membership Matters

---

**Membership Secretary RICHARD ATTWOOD**

This quarter, we are pleased to welcome the following new members:-

Cainscross Parish Council	Miss I Dawson, Winchcombe, Glos
Mr DF Wilkes, Cardiff	Mr RG Percival, London
Mr G Holdroyde, Warwick	Mr SG Davis, Cashes Green, Stroud
Mr MJ Harden, Christchurch	Major H Britton-Johnson, Byfleet
Mr M Weisskopf, Switzerland	Mr D Renshaw, London
Mr N Clough, London	Miss L Mawson, Swindon
Mr D Catchpole, Swindon	Mr RP Nicholas, Minchinhampton
Mr RD Ayres, Swindon	Miss B Bellafontaine, Tring
Mr C Fletcher, Devizes	Mr A Ayres, Ipswich
Mr H Kjellin Liss, Hants	Mr D Ross, Camberley
Mr D Graham, Bradford on Avon	

# End to End

---

## THE END TO END WALKS

**PART ONE: SUNDAY 15th SEPTEMBER 9.00am** Meet in the Riverside car park, Lechlade (OS212992) to walk about 10 miles following as closely as possible (subject to permission from landowners) the line of the Thames & Severn Canal. Lunch will be taken at Kempsford. The walk will pass Inglesham, Marston Meysey and Cerney Wick Roundhouses. Passing the Wharfingers house and skirting the SSSI of North Meadow at Cricklade, the junction with the North Wilts Canal will be inspected with a short detour from Latton Basin. The day ends at the Cotswold Water Park Information Point (OS072972) where transport will be available back to the start.

**PART TWO: SUNDAY 22nd SEPTEMBER 9.00am** Meet at Cotswold Water Park Information Point (OS072972) to walk about 10 miles following the line of the Thames & Severn Canal. The walk will follow the newly opened towpath at Cowground Bridge to a lunch stop at Siddington. Following the summit pond as closely as possible, the walk will join the end of the River Thames long distance footpath to link in with the Cotswold Canals Trail past Coates Roundhouse and over the top of Sapperton Tunnel, ending at Sapperton Church (OS948033) where transport will be available back to the start.

**PART THREE: SUNDAY 29th SEPTEMBER 9.00am** Meet at Sapperton Church (OS948033) to walk about 12 miles following the line of the Thames & Severn Canal and the Stroudwater Navigation. Descending through the Golden Valley, the walk will make a small diversion to explore the steeply housed hillside of the "alpine" village of Chalford. A lunch stop will be made at Stroud before joining the Stroudwater Navigation at Wallbridge for a walk to Ryeford where the Cotswold Way footpath crosses the towpath. Continuing past the Eastington flight, Saul Junction will be reached where transport will be available back to the start. Walkers with energy to spare may wish to continue the walk to Framilode, on the banks of the River Severn where the Cotswold Canals Trail joins with the Severn Way long distance footpath.

## Licences

---

Enquiries about boat licences for the Stroudwater Navigation have been on the increase recently. They are issued by the Company of Proprietors and enquiries should be directed to Mrs G M Simpson, The Cottage, Bowl Hill, Kingscourt, Stroud, Glos., GL5 5DS (Tel 765610)

## Thanks!

---

John Sayle who previously gave the Trust some roof tiles to sell and an old landrover, has now presented the Trust with a cheque for £1000. Thank you again John.

Dulux Paint Community Projects Scheme has donated a total of 15 litres of paint to us to be used to repaint the dredger and Tug Boat.

---



# Sales Order Form

ITEM	PRICE £	QTY
*Around the Cotswold Canals (10 Circular Walks - 2nd Edition)	2.50	
*Restoring the Cotswold Canals	0.50	
Canal Barges & Narrow Boats (Peter L. Smith)	1.75	
Canals & Waterways (Michael E. Ware)	3.95	
Discovering Canals in Britain (Peter L. Smith)	2.50	
The Flower of Gloster (E. Temple Thurston)	8.95	
The Stroudwater Canal - Vol 1 (Michael Handford)	3.50	
S.T&S Canals in Old Photographs (E. Cuss & S. Gardiner)	7.95	
S.T&S Canals Towpath Guide (M. Handford & D. Viner)	7.50	
Thames & Severn Canal (Humphrey Household)	6.95	
Thames & Severn Canal (David Viner)	4.25	
Working Life on Severn & Canal (Hugh Conway-Jones)	7.95	
*The TROW - All issues available	0.50	
*TROW Binder - Holds 12 issues - suitable for all A5 mags.	3.50	
*Map - plan and section of Cotswold Canals	2.50	
Imray Map of the Inland Waterways of England	3.50	
*Sweater - with embroidered logo	14.00	S M L XL
*Sweatshirt - with embroidered logo	13.00	S M L XL
*Sweatshirt with printed logo	10.50	S M L XL
*Tennis/Sport Shirt - with embroidered logo	12.00	S M L XL
*T-Shirt - with printed logo	5.00	Child S M L XL
*Baseball Hat - with printed logo	3.75	
*Sew-on Badge - with embroidered logo	2.50	
*Tie - with embroidered logo	6.50	
*Tea Towel - Cotswolds (includes Cotswold Canals)	2.50	
*Car Sticker - New for 1991	0.40	
*Pen	0.30	
*Pencil with eraser	0.25	
Plant pot - hand painted with canal roses	0.95	
Thimble - Round house	3.00	
Thimble - Buckby can	3.00	
*Thimble - Cotswold Canals Trust	1.50	
*Standard Mug	3.30	
*Half Pint Tankard	4.00	
*Pint Tankard	6.20	
*Milk Jug	6.80	
*Goblet	5.10	
*DENOTES SPECIAL COTSWOLD CANALS TRUST ITEM		
Please tick your selections, sizes and quantities required and send the form with your address and remittance to:-	TOTAL = £	
<b>Chris Jones - Sales Manager</b>	POSTAGE & PACKING = £	0.65
<b>The Courts, 27 Walton Road, Clevedon, Avon, BS21 6AE (Telephone 0272 875714)</b>	TOTAL ORDER VALUE = £	
Please make cheques payable to "Cotswold Canals Trust"		Aut 91

# Diary Dates

Mon 2 Sep Western Branch Meeting  
 W/E 7/8 Sep Stonehouse Traction Engine Rally (Sales Roadshow)  
 Tue 10 Sep Summit & Thames End Branch Meeting  
 Sun 15 Sep End to End Walk Part 1 (see p.15)  
 Sat 21 Sep Connexion 91, Stratford Park, Stroud (Sales Roadshow)  
 Sun 22 Sep End to End Walk Part 2 (see p.15)  
 Fri 27 Sep Skittles evening - contact Jeffrey Shaw  
 W/E 28/29 Sep Summit & Thames End Working Weekend  
 Sun 29 Sep End to End Walk Part 3 (see p.15)

Mon 7 Oct Western Branch Meeting  
 Tue 8 Oct Summit & Thames End Branch Meeting  
 W/E 12/13 Oct WRG BIG DIG! Wantage, Oxon (see p.2)  
 Sat 19 Oct Cotswold Canals SPLASH! NEW DATE (see page 12).  
 Sun 20 Oct TROW Winter Copy Date  
 Fri 25 Oct Quiz Evening - contact Jeffrey Shaw  
 Sat 26 Oct Cotswold Canals Trust AGM, Ebley Mill  
 W/E 26/27 Oct Summit & Thames End Working Weekend

EARLY NOVEMBER BITM Workparty & Bonfire Night (ring Robin Halliday)  
 Mon 4 Nov Western Branch Meeting  
 Wed 6 Nov Members Gathering (joint Wilts & Berks & Summit & T E)  
 Tue 12 Nov Summit & Thames End Branch Meeting  
 W/E 23/24 Nov Summit & Thames End Working Weekend

Mon 2 Dec Western Branch Meeting  
 Tue 10 Dec Summit & Thames End Branch Meeting  
 W/E 28/29 Dec Summit & Thames End Working Weekend

Western Branch volunteers work most weekends and would welcome your help. Please ring for details or call in at Eastington. Summit & Thames End Branch work at least the dates listed above. Please ring for details of extra working dates. Members and friends are welcome at Branch Meetings and Special Events. If you would like to offer your help, please contact the appropriate person listed on page 20. Western Branch meet at 7.30pm at the Imperial Hotel, Stroud. Summit & Thames End Branch meet at 8.00pm at the Thames Head public house, near Cirencester on the Tetbury Road.

**IWA & FRIENDS OF THE MUSEUM EVENTS** Meet at 7.30pm at the Museum Schools Room National Waterways Museum (except 10 Sep & 12 Nov)

Tue 10 Sep **SEVERN TIDAL POWER** - by Dr T L Shaw, advisor to the Severn Tidal Power Group AT TEWKESBURY MARINA

Tue 15 Oct **WORKING BOATS IN THE FIFTIES & SIXTIES**  
 an illustrated talk by Richard Courtney Lord

Tue 12 Nov **THE GLOUCESTER/SHARPNESS BREACH** - an talk by John Weston, BW Operations Engineer, (SW) AT TEWKESBURY MARINA



Tue 17 Dec **FOREST LIFE - THE RIVER SEVERN** - Melville Watts of Lydney shows his award winning film

# Cotswold Canals Trust



## DEPARTMENTS

MEMBERSHIP	FREEPOST (GL65)	P.O. Box 71. Stroud, Glos., GL6 7BR
SALES MANAGER	CHRIS JONES	The Courts, 27 Walton Road, Clevedon, Avon, BS21 6AE (Clevedon 0272 875714)
TROW EDITOR	DAVID JOWETT	11 Upper Leazes, Stroud, Glos., GL5 1LA (Stroud 0453 755535)

## SUMMIT & THAMES END BRANCH

CHAIRMAN	ROBIN HALLIDAY	16 River Park, Marlborough, Wilts. SN8 1NH (Marlborough 0672 513400)
SECRETARY	JAMES KING	Moordown, Northfield Road, Tetbury, Glos. GL8 8HE (Tetbury 0666 502797)
TREASURER	JOHN LUCAS	Linquenda, Winstone, Nr. Cirencester, Glos. GL7 7JZ (Miserden 028 582 587)

## WESTERN BRANCH

CHAIRMAN	JOHN FERRIS	Comptons, Park End, Paganhill, Stroud, Glos. GL5 4AZ (Stroud 0453 766072)
DEPUTY CHAIRMAN	NICK PARKER	36 Water Lane, Wotton-Under-Edge, Glos. (Dursley 0453 521106)
SECRETARY	ALISON RUCKERT	36 Water Lane, Wotton-Under-Edge, Glos. (Dursley 0453 521106)
TREASURER	GEORGINA BAYLISS	Avonlea, 50 Stanley View, Dudbridge, Stroud, Glos. (Stroud 0453 753847)
EVENTS ORGANISER	JEFFERY SHAW	The Cleeves, Nailsworth, Glos., GL6 0PA (Nailsworth 045383 3373)

## VOLUNTEER GROUPS

WESTERN BRANCH	DOUG BLAKE	19 Stratton Road, Gloucester. (Gloucester. 0452 415843)
SUMMIT & THAMES END	ROBIN HALLIDAY	16 River Park, Marlborough, Wilts., SN8 1NH (Marlborough 0672 513400)
TRIP BOAT CO-ORDINATOR	AMANDA FISK	11 Upper Leazes, Stroud, Glos., GL5 1LA (Stroud 0453 755535)



The Trust astrologer saw the above picture in her crystal ball which apparently shows Wallbridge in ten years time whilst we captured John Ferris seeking divine intervention on the slipway to free the excavator!

