

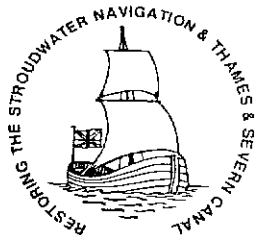
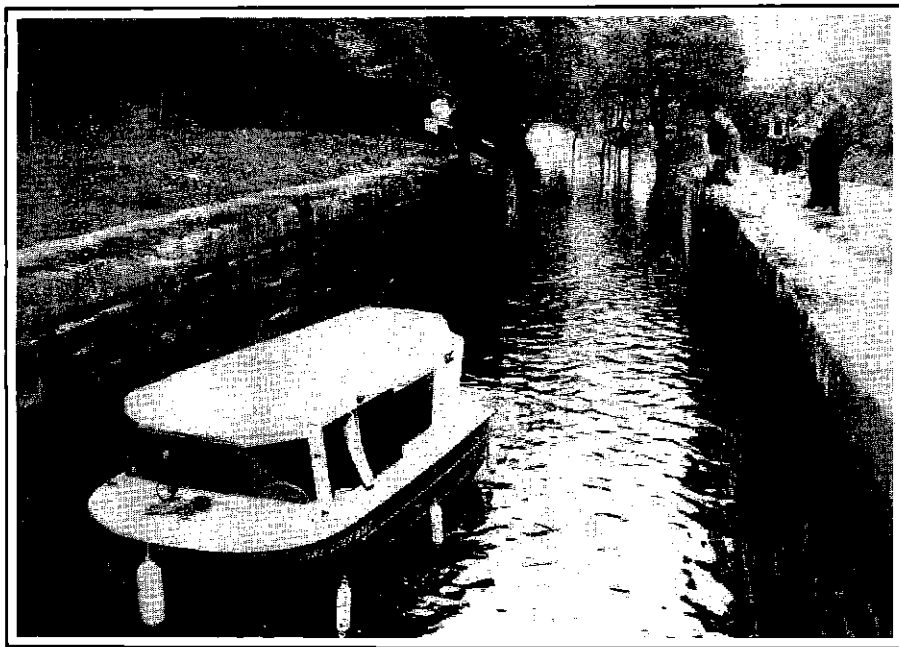
# Trow

THE OFFICIAL MAGAZINE  
FOR MEMBERS AND FRIENDS  
WORKING TO RESTORE THE  
COTSWOLD CANALS

No. 78

AUTUMN 1992

50p



Cotswold Canals  
Trust

### COPY DATES

SPRING.....20th JANUARY  
SUMMER.....20th APRIL  
AUTUMN.....20th JULY  
WINTER.....20th OCTOBER

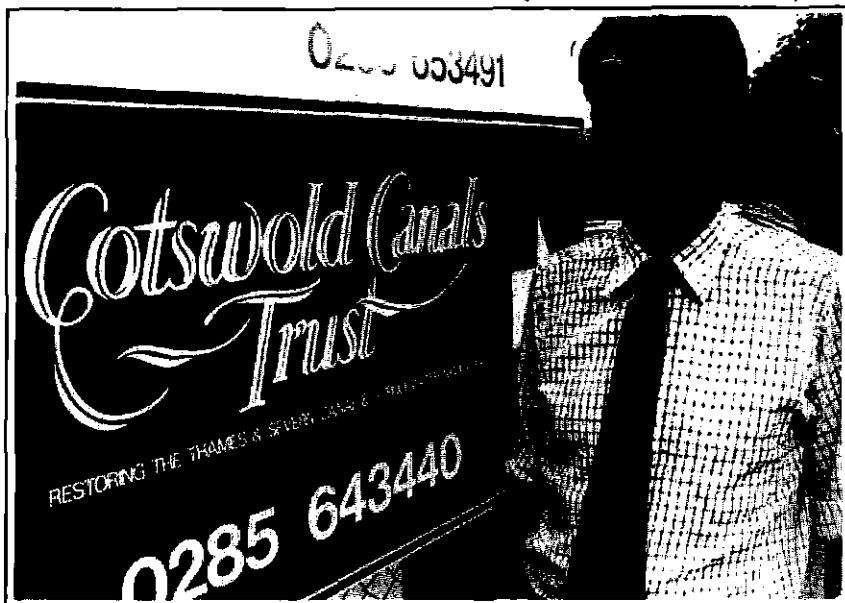
THE VIEWS & OPINIONS IN  
THIS MAGAZINE DO NOT  
NECESSARILY REPRESENT THE  
VIEWS & OPINIONS OF THE  
COTSWOLD CANALS TRUST

### Contents

Reflections of the General Secretary	2
Field Officer's Report	3
Western Work	4
Summit & Thames End Branch	5
Water Transfer	6
Nuts & Bolts No 2 - Dredging	8
Social Diary Dates	9
AGM Notice, Details & Map	10
Membership Matters	12
A Work Party For You	16
Sales Order Form	18
A Towpath Conversation...	19

Published by the Cotswold Canals Trust  
**Compilation and Layout by David Jowett**  
Printed by Astral Printing & Stationers, Picadilly Mills  
Lower Street, Stroud, Glos. (Tel: Stroud 0453 752040)

FRONT COVER: Pike Lock Boat enters Blunder Lock. Destination Newtown!  
BACK COVER ABOVE: Works in Progress at Eastington alongside the canal.  
BACK COVER BELOW: The completed slipway and a narrowboat! The boat is  
designed for flowerpots and made by member, Alan Byrne.  
BELOW: General Secretary, Commander Nicholas Wright, with office sign.  
(Photo courtesy Wilts & Glos. Standard)



## Reflections of the General Secretary

---

Some members will say that this title looks rather familiar - where else has it been used? The answer is simple, within the "Butty", the house magazine of the Kennet & Avon Canal Trust, my former employer.

So I'd like to continue with a column that was devised to keep you, the membership, advised about progress from Head Office or, to be precise, the canal office now established in Cirencester.

We have been here since early April, based at the end of the Green Baize Snooker Club in Chesterton Lane, and very nearly above the old Cirencester Arm of the Thames & Severn Canal. I say we, as I have now been joined by Mrs Maureen Poulton who is a canal enthusiast as well as being the P.A., secretary, local accountant, etc., etc. The jobs are endless.

The office has two very smart signs, originated through Trust member Neil Ritchie of Contract Sign Services.

What do we do? Our efforts can basically be sub-divided into three main areas:

Firstly, to promote the objects and interests of the Trust and generally administering long term restoration plans, which include land ownership, operating and maintenance of the waterway.

Secondly, co-ordination and liaison with local and other statutory authorities. A point of interest is that I am not responsible for the overall administration of the Trust's affairs, nor for the detail of restoration works. Your Council's very effective management team will continue to do that, but inevitably there must and will be overlaps.

Thirdly, fund raising activities.

What has been achieved? A lot of meetings to see who's who in the local areas, discussion on progress and where we go from here: ie. pre-planning and facing up to the challenges ahead. In the East, distribution of the Halcrow Report to, and discussion with, riparian land owners; talks about gravel extraction and how we might put it to advantageous use in this area. In the West, how best to go about the establishment of a working consortium to open up the Walk Bridge area. In the centre, talks about licenses to work on the canal on either side of the tunnel, also preventative maintenance to ensure no further dereliction occurs, and the same for Siddington Locks and Cowground Bridge.

For the latter, which will cost over £20,000 for materials alone, we have just launched a local Cirencester appeal, over 700 letters to local businesses to see whether they can help "in kind" or with financial assistance. I hope to report some success in the next edition of the TROW.

Other areas of particular interest are investigations into Derelict Land Grants, money from the EC and the current discussions going on about water transfer from North West to South East, with the possibility of our canal being used. Early days yet.

---

Our main fund raising effort is taking shape, but we do also need your help. Can you possibly identify charitable trusts, companies or, indeed, individuals who could help us with this appeal. Any help or ideas would be most appreciated. Although it may not be the best financial climate in which to launch an appeal, is there honestly ever a "best time" to set up this sort of thing? Later, we hope to be able to stage a few spectacular fund raising events along the canal. Any ideas most welcome.

Regrettably, I have not been able to meet many of you during this summer at the numerous events along the canal. In 1991 I did achieve the whole of Richard Attwood's "Canamble", but as I am still living south of Devizes I have not become further involved in the social gatherings or branch meetings. I hope, before too long, that this situation will be rectified, but I will be at the A.G.M. in October, so hope to meet many of you there.

If in Cirencester, do drop into the office or, if you have any queries, please do give Maureen or myself a ring.

---

## Field Officer's Report

---

Field Officer **KEN BURGIN**

The employment of a full time General Secretary and assistant has had a profound effect on the amount of issues that the Trust can cope with at any one time. Opportunities that used to sit on the back burner for months, or even years, due to other urgent priorities are now being addressed efficiently and quickly. The result has been a re-shuffling of tasks between the volunteer bureaucracy (principally Bruce Hall, Richard Attwood and myself) and the new office. Some of the ongoing items will now be reported by Nick Wright as they develop under his care.

**Boat Licenses** are now available from myself and from the office. They are issued with a set of terms and conditions which point out that the canal is under restoration and therefore certain shortcomings and inconveniences must be anticipated. There are two types of license, powered (with use of locks) and unpowered with no differentiation on boat size. The charges are:-

	Day	Week	Year
Unpowered	£1	£2	£10
Powered	£5	£10	£25

These licenses do not include mooring except short term whilst in use, but use of the slipway at Eastington is included. Longer term mooring arrangements have not yet been sorted out but will be in due course. Licenses only cover those sections of the canal where the Trust has the agreement of the owners.

---

# Western Work

---

Report by KEN BAILEY

The Trust has made another major purchase recently in the form of a large quantity of scaffolding, enough to fully scaffold a couple of complete lock chambers. Our thanks go to John Chesterman who not only provided his lorry to move this load but also spent some six hours helping us load and then unload everything. Along with the scaffolding came a number of other useful items including wheelbarrows, ladders, sheeting and a couple of window lintels. If anyone requires steel lintels for a house extension, we now have a number in different sizes. Once again we have the IWA to thank. It was a part of a recent donation by the Gloucestershire Branch that paid for this and the flat bed trailer described last time.

On the work front, things have been a little less busy in the last couple of months although a significant number of smaller tasks have been finished off. We now have mooring bollards at both the slipway and Blunder Lock, Steel frames have been fabricated for walkways across the top and bottom gates at Blunder Lock and should soon be fitted together with the walkways themselves. An escape ladder has now been manufactured for Newtown Lock and a second ladder, donated by Berkeley Nuclear Power Station, will be modified slightly to fit either Pike Lock or Dock Lock.

The Dredger has been moved slightly upstream to put it out of the reach of vandals in that area until such time as we are able to lift it out and transport it back to Eastington for a much needed overhaul, replacement engine and repaint.

The contractors are progressing well with the work on Ebley Bypass at "Hayward's Bridge" near Stonehouse. The bridge provides both good width and height but its alignment with the canal will not allow a straight run through for wide craft although a suitable lead in and out will be provided. It is believed that the completion of the road over the bridge has been delayed due to spending cuts but this should not affect the canal and we hope to see the dams that currently block the canal removed within the next couple of months.

Meadow Mill Spill Weir is being worked on again with the rear vertical tube being rebricked and the back run off area reconstructed. This project was first started back in 1988 (see Trow No. 63 for description and drawings). At that time I said that it would take about six months to complete. Well, I should have said six months of work. We have been interrupted several times and the local vandals seem to appear at the site as soon as we leave and return the bricks and stones to the bottom of the tube every time we lift them out. We are finally completing the project this time and other jobs will have to wait!

Once the current outstanding tasks have been completed we will then start on preparation work ready for the excavation of Dock Lock. It is intended to use the infill from the chamber to slightly widen and raise the towpath both above and below the lock to allow vehicle access to the chamber for the reconstruction work and future maintenance.

# Canamble '92

---

## Walk Leader RICHARD ATTWOOD

At the time of writing, two of the four Canambles have taken place. On each of them I had hoped for 50 or so "Canamblers".

The first Canamble from Saul Junction to Brimscombe Port attracted 87 walkers, half of whom were not Trust members. It has, of course, been suggested to them that they should join our growing ranks (see Membership Report). The day was excellent for walking, although the vast number of bodies to climb over stiles across the fields near the A38 road caused some delays which necessitated a brisk late morning walk to the watering hole at the Clothiers Arms. The day ended with Stroud Bus Company generously providing transport back to Saul Junction.

Canamble 2 began on a damper note with heavy drizzle. However, this did not prevent 77 walkers arriving at Brimscombe Port for the longest distance Canamble to the end of the Cirencester Arm. The long distance was made more interesting by the climb up the Golden Valley and the ascent of the Cotswold Hills following the route of the towing horses past Sapperton Tunnel! The final ascent was made more bearable by a relaxing lunch at the Daneway Inn. Once again, John Evans and Stroud Bus Company did the honours but this time with a Double Decker Bus!

Canamble 4 starts from the bridge over the River Thames in Cricklade (OS Pathfinder 1134 102939) at 10.30am on Sunday 20th September.

## Summit & Thames End Branch

---

### Branch Chairman ROBIN HALLIDAY

The principle activity of the Branch has been the running of the Trip Boat into Sapperton Tunnel on every weekend up to the end of May. Bank Holiday weekends produced an encouraging return for the efforts of all involved. We were also glad to welcome new faces to the roster but we are keen to hear from new volunteers. Water levels have followed the pattern of recent years. Once the high spring level has been reached, levels subside slowly but surely and refuse to rise again even though there was appreciably more rain this summer and the tunnel springs have continued to flow.

Next year we look forward to a new Battery charging routine. Instead of "Tunnel-leggers Back", Tunnel Trip Boat volunteers suffer from "Battery-luggers Knee"!

We recently welcomed Alan Byrne to Coates, to make a start on the repair of the somewhat crumbly stonework of the inside of the tunnel entrance. This is a section of tunnel that is constantly exposed to the weather and has suffered accordingly. We are grateful to Alan for his help.

Further towards the Thames End, new beams have been purchased and weather proofed for Cerney Wick Lock. They remain to be cut and fitted to the gates. Other Work party activity is likely to include towpath clearing so that "Canamble" walkers can leave their machetes at home!

---

# Water Transfer

---

Report by KEN BURGIN

The proposal to use the Stroudwater and Thames & Severn route for inter-regional water transfer is not new, it was proposed by the Trust in the early days. However, a number of things have happened which have put the issue firmly on the agenda again. These are:-

- The water shortage in the South East is desperate and getting worse.
- The formation of the N.R.A. means that water companies cannot continue to pump the landscape dry.
- Canals have been proposed as one of the most likely solutions to this problem.

In March, the N.R.A. published a booklet entitled "Water Resource Development Strategy" which outlined the existing and projected water supply surpluses and shortfalls. This shows that the main problems will be in the South and East whilst Wales and the North have water to spare. Water transfer by river and canal comes across as the favoured option as a water pipeline grid is considered too expensive.

In July, British Waterways issued a major press release to show how their canals could be used to transfer water. In total, 162 miles of canals would move 60 million gallons a day via the Oxford Canal. BW have suggested that this scheme could be implemented in five years.

How does our route compare? It is easy to get water from Wales to Gloucester via the Severn and water is already extracted here for use in Bristol with plenty more available. Water would reach Saul via the Gloucester & Sharpness Canal.

The main constraint in terms of quantity that can be moved is the cross section of the canal and this is at its worst in bridge holes and the tunnel on the Thames & Severn. The bridges are really less of a problem as the few originals could be provided with bypasses and all the new road and farm bridges can be rebuilt to larger channel dimensions. Fortunately, the summit level of the Thames & Severn, including the tunnel, was designed to be deeper than the rest to allow the summit level to act as a reservoir. It therefore seems likely that about 50 - 60 million gallons of water a day can be shifted with a flow of about 1 MPH provided the channel is kept dredged to its original profile.

The main problem with expense would be getting the water to the summit level at Daneway. The locks would have to be back pumped either individually or in groups when they are close together. The result would be a canal that would appear to run uphill. The total vertical height to be pumped is about 100 metres. Careful design of the intakes and outflow from the pumps would be needed to avoid turbulence and to keep navigation safe.

In order to maintain the flow rate and keep a respectable depth in the summit, one or two new locks might be needed part way along. These, with

---

---

their pumps, would restore the head needed to keep the canal flowing eastwards.

Once at Siddington, the water would flow by gravity through bypass channels around the locks. In order to keep the intakes down to a reasonable size, these may take the form of an underfall rather than an overflow system with the flow regulated by automatic paddles. Again, returning the water to the canal below would require careful design.

It turns out that water extracted from the Severn is not of the same chemical composition as that found in the Cotswold rivers and therefore it cannot be dumped straight into the Churn or the first part of the Thames. This is good news for the canal as it means that the whole of the canal route would have to be used. At some point the water would be stored in a new reservoir which is likely to take the form of a worked out gravel pit.

The whole thing is almost too good to be true as it would solve almost all our problems at a stroke, no more water shortages, ongoing maintenance assured, full restoration in a few years, etc. This might all sound like wishful thinking and only time will tell but consider the following:

- As the canal is derelict for the most part, work can be carried out far more easily without having to maintain navigation at the same time.
- It is likely that this scheme will turn out to be very cost effective in capital terms compared with the alternatives.
- The environmental, amenity and heritage gain would be very great thus making the whole scheme attractive compared with a pipeline.

What next?

The NRA will have a feasibility study carried out covering the Cotswold Canals during this autumn. During next year choices will be made as to which schemes will go ahead and these will form the basis of a development strategy. What happens then will probably depend on how hard it does or does not rain!

## As Seen On T.V.

---

Clive Gunnell, that intrepid HTV West walker, has recently completed his west to east adventure along the Cotswold Canals. Using the waterway as a link he has drawn into the picture interesting people and structures within easy striking distance of the canal.

All being well, this twelve part saga will be shown on HTV West starting in the New Year.

---



# The Nuts & Bolts Series – No. 2: Dredging

---

KEN BAILEY

The Dredging fleet consists of the four largest pieces of equipment that the Trust owns. The fleet consists of a Floating Dredger, a Push Tug and two Mud Hopper Barges.

**THE DREDGER** was built in Hamburg by the German firm "Weri" during the late 1960's, its actual year of manufacture is not known. This machine was originally intended as a self propelled suction dredger, pumping the dredged material away to a settling area. When it was acquired by the Trust in 1976, from the liquidators of a company based near Taunton, it was in need of considerable work. The suction pump unit and also the propulsion motor were not serviceable and these have never been replaced.

Over a four year period, Alan Jones, who at that time had taken on the Plant Maintenance Co-ordinator's task, masterminded the strip down and rebuilding of the entire machine at the Trust's workshop at "The Piggery" at Aston Down, near Chalford. During that time, the hydraulic rams, motors and pumps were overhauled, in some cases by their original manufacturers. The hull was cleaned, grit blasted and repainted. The arm was repaired, the side winches remounted in a more useful position and the electrics rewired.

One of the unusual features of this machine is that it is equipped with its own set of axles which allow it to be towed from one site to another. Before the dredger was launched it took part in the Stroud Carnival to publicise the Trust's work and caused some alarm when the tractor towing it developed wheel spin and allowed it to start rolling back downhill slightly. No harm was done and the procession reached home safely.

The dredger was eventually launched on to Ryeford pound in 1980 and after a few teething problems were solved it was handed over to the M.S.C. scheme which was to carry out dredging from Ryeford Double Lock back towards the Skew Railway Bridge.

Since the M.S.C Scheme came to an end the dredger has unfortunately laid idle due initially to a lack of volunteers able to drive it and latterly due to the fact that it was discovered that at least one of the big end bearings has gone.

Currently the dredger is moored mid-stream in rather a sorry state at the back of the Ship Inn at Stonehouse. Plans are now being made to remove it from the water and take it back to the compound at Eastington where a replacement engine will be fitted and the entire vessel repainted with paint which was donated by Dulux last year. A number of problems exist with moving it in that it weighs over ten tons complete, suitable access to the canal side along this length is poor and its engine is not usable. In addition, the mountings for the front axle have been badly damaged and require replacement.

Facts & Figures: Length 8 metres. Beam including side tanks 4.4 metres.  
Engine Deutz F6L714 105HP 10 litre 1800 RPM Air Cooled Diesel  
Bucket Capacity: 0.33 Cu metre. Max Excavation Depth: 2.5 Metres

---

# Social Diary Dates

---

## Report by NICK PARKER

As mentioned briefly in the last TROW, a Member's Dinner has been arranged for the 31st October at the King's Head Hotel in Cirencester, where we enjoyed the Bicentenary Dinner back in 1989. Bookings are now being taken at £15 per head. To keep things simple, a Roast Beef set meal will be served although vegetarian alternatives are available - please let me know when you book.

The evening starts at 7.00pm for 7.30pm and an after-dinner speaker has been arranged. For those of you who live away from the canals, the hotel will provide overnight accommodation at reduced rates. Please contact them direct on (0285) 653322. We hope that this will encourage you to come to the Dinner and the A.G.M. and Review of the Year which takes place earlier in the day. Please send your booking to me at 36 Water Lane, Wotton-Under-Edge, Glos., GL12 7LG. with your cheques payable to "Cotswold Canals Trust". If you have any queries, please phone on (0453) 521106.

Events that we have enjoyed so far this year included the Severn Cruise which took place on a cold and blustery June evening. Nevertheless, the ninety or so people thoroughly enjoyed themselves even if those at the front had to take advantage of the blankets offered by the crew! The Queen Bodicea II was one of the Dunkirk Little Ships and is now the trip boat which operates from Gloucester Docks.

One of the highlights of the year has to be the Annual Barbecue. As usual we were fortunate to enjoy the hospitality of Jane & Jeffery Shaw at their home near Nailsworth. We were sorry that Jane was not her usual 100% due to a problem with her ankle which had restricted her to crutches. On behalf of those present we wish Jane a good recovery and thank you once again for a wonderful evening.

## Information Please!

---

### Report by KEN BAILEY

The Trust is currently looking to purchase two items of plant to aid future works. Firstly, a large four wheel drive dumper with hydraulic tipping to move excavated materials and also a fairly large wheeled 360 degree excavator which will be able to carry out land base dredging, excavation of lock chambers and also serve to empty the mud barges when we re-commence the floating dredging operation. If anyone knows of a plant hire firm or contractor who wishes to dispose of such items, please let me know.

In order to plan future works it is important that we are able to calculate accurate costings. We need to find suppliers of various items so that we can obtain budget costings. Firstly, pre-cast concrete box sections suitable for construction of farm access bridges. Secondly, manufacturers of temporary bridges which could be simply modified to form lift bridges. If you have information on either of these or any other contacts, primarily in the construction industry that you think may be of any use, please let either myself or the office have the details.

---

# AGM

---

## NOTICE OF ANNUAL GENERAL MEETING

NOTICE IS HEREBY GIVEN OF THE 17TH ANNUAL GENERAL MEETING OF  
THE COTSWOLD CANALS TRUST  
(STROUDWATER-THAMES & SEVERN CANAL TRUST LTD)  
TO BE HELD AT  
COTSWOLD DISTRICT COUNCIL CHAMBER, TRINITY ROAD,  
CIRENCESTER, GLOUCESTERSHIRE  
AT 2:30 PM ON SATURDAY, 31st OCTOBER 1992.

### AGENDA

1. To receive the minutes of the 16th Annual General Meeting.
2. To receive the report of the Trust Council.
3. To receive the Accounts and Auditors report.
4. To agree the remuneration of the Auditors.
5. Discussion of future Trust activities.
6. To elect members to the Trust Council.
7. Any other business.

### NOTICES

1. Notices of intending proposals for membership of the Trust Council must be lodged with the Secretary, in writing, not less than 14 clear days before the AGM, ie. to arrive by the latest post Friday 16th October 1992 together with the written agreement of the person proposed. Proposals must be sent to the Honorary Secretary, Cotswold Canals Trust., 89 Hill Corner Road, Chippenham, Wilts., SN15 1DT.
2. Voting Rights - All classes of membership, except for Youth members, are entitled to one vote each member, whether collective or individual. Youth members have no voting rights since such members cannot be held responsible in law.
3. Any members entitled to be present and to vote at the meeting may appoint a proxy who must be a voting member of the Trust. The instrument, a legally correct proxy form, appointing a proxy is obtainable from the Honorary Secretary not less than forty eight hours before the time of the meeting.
4. Copies of the accounts will be available at the Annual General Meeting. Members who require full copies of the accounts, to be distributed at the start of the AGM should apply, in writing, not less than 14 days before the date of the meeting. Requests for accounts should be sent to the Treasurer, Cotswold Canals Trust, FREEPOST (GL 65), PO Box 71, Stroud, Glos, GL6 7BR

---

The Trust Sales Stand and display will be present and the AGM will be followed by a Review of the Year. The map printed opposite will help you to find the venue. Remember, the Grand Draw will take place at the AGM.

---



# Membership Matters

---

## Membership Secretary RICHARD ATTWOOD

This quarter we are pleased to welcome the following 43 new members:

Mr M Norris, Longlevens, Gloucester	Mr KF Twist, Cam Dursley
Mr C Hart, Noss Mayo, Devon	Mr J Griffin, Huntingdon, Cambs.
Mr P Pennycook, Saltford, Bristol	Mrs C Constable, North Cerney, Glos
Mr IG Hughes, Chalford, Stroud	Mr B Watson, Cirencester
Mr JRL Few, Exmouth, Devon	John Wood, Abingdon, Oxon
Mr & Mrs Boast, Somerford Keynes, Glos	Sandra Wickham, Abingdon, Oxon
Mr D Phillips, Bishops Waltham, Hants	Mr BE Taber, Downend, Bristol
Brian & Jill Poulton, Devizes, Wilts	Mr A Road, Bath, Avon
Mr R F Clarke, Bathpool, Taunton	Mr CB Davis, Box, Stroud
Ms MR Camp, Ashton Keynes, Wilts	Miss LV Welch, Cashes Green, Stroud
Mr & Mrs RH Derrick, Charfield, Glos	Ulick Palmer, Chewton Mendip, Bath
Mr WH Brockbank, Eastington, Glos	Mr RA Hutchings, Warminster, Wilts
M & H Siebenaller, Bussage, Stroud	Dr R Dawson, Manchester
Mr J Hatch, Stroud	Mrs Judi Comber, Bussage, Stroud
Mr K Osborn, Tavistock, Devon	Mr DJ Grove, Blakeney, Norfolk
Mr S Hawker, Cashes Green, Stroud	Mr & Mrs PJ Willard, Stowmarket,
Mr J Morsley, Hitchin, Herts	Mr NG Rowles, Cheltenham
Mr M Clements, Tockington, Bristol	Julie Barrett, Taunton, Somerset
Mrs H Owen, Bishops Cannings, Devizes	Mr RH Wetton, Newbury, Berks
Chalford Chairs Ltd, Chalford, Stroud	Minchinhampton Parish Council
Sapperton Parish Council	Eastington Parish Council
Bisley with Lypiatt Parish Council	

The number of members now stands at over 700 and is steadily increasing. However, our target for 1993 is 850 members and to achieve this, you the member can help and be rewarded for recruiting a new member.

Until further notice, new members, and the member recruiting them, will receive a FREE copy of "Around the Cotswold Canals" which is normally sold for £2.50. When your new member fills in their application form you should attach a note of your name and address to it so that you and the new member can receive "Around the Cotswold Canals".

With your help we could easily reach 850 members and the magic figure of 1,000 is not an impossibility.

Not only can new members and their recruiters receive a copy of "Around the Cotswold Canals", but if you change your method of payment to a Banker's Order and Deed of Covenant, then a copy of the brand new Canal Trust publication, "Churches Along the Cotswold Canals" will be yours!

---

### DATA PROTECTION ACT 1984

The membership records are computerised and are registered under the Data Protection Act 1984. In accordance with this act your entry is available for your inspection. If you would like to inspect this, or if you have any reason to believe it is inaccurate, contact: Cdr. N. Wright, General Secretary, Cotswold Canals Trust, The Flat Offices, CDC Depot, Chesterton Lane, Cirencester. Glos. GL7 1YE.

---

# Membership Application

To: I would like to become a member of the Cotswold  
The Membership Secretary, Canals Trust and receive my FREE copy of  
FREEPOST (GL65), P.O. Box 71 "Around the Cotswold Canals"  
Stroud, Glos., GL6 7BR I enclose my subscription for the first year  
or I have completed the Banker's Order Form

NAME IN FULL.....

ADDRESS.....

.....POST CODE..... TEL No.....

AGE (if under 18).....OCCUPATION.....

MEMBERSHIP  
CLASS

ADULT £8

SENIOR CITIZEN £ 5

FAMILY £10

CORPORATE £10  
Clubs Companies etc

(Please  
tick)

YOUTH £2  
under 18

SIGNED.....

Please send details of LIFE MEMBERSHIP £200   
COVENANTED LIFE MEMBERSHIP (4 years @ £50)

DATE.....

## The 'National'

Sales Manager CHRIS JONES

This year the Inland Waterways Association National Waterways Festival will be held on the Aire & Calder Navigation at Broad Reach in Wakefield from Saturday 29th to Monday 31st August 1992.

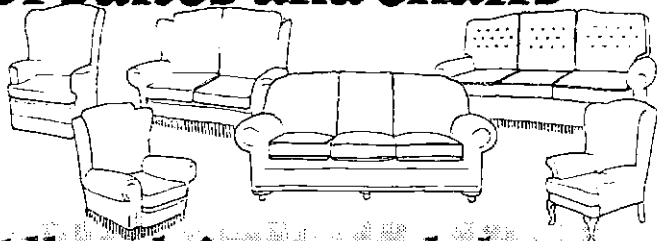
On the run up to the August Bank Holiday the Aire & Calder and other waterways throughout the country will come alive as boaters make their way to enjoy a taste of Yorkshire hospitality at the UK's largest Waterways Event of the Year.

The Cotswold Canals Trust will, as always, be fully supporting the I.W.A. and we hope our exhibition in Wakefield will be bigger and better than ever reflecting our position as one of the foremost canal restoration groups in the country.

The I.W.A. motto throughout the build up to this years show has been "Come and enjoy some northern hospitality." We certainly intend to - with perhaps a little "Cotswold Flair" thrown in for good measure. Do come and visit us and I hope you will like what you see.

Further event details are given on the official rally poster which is printed in this TROW. However, if you need further information, please contact me on (0275) 875714. Any of our rally team can be contacted at any time on site at Wakefield on mobile number (0831) 344859.

# Come and see our range of suites and chairs



All made in our workshops and offered at factory prices

## CHALFORD CHAIRS

SHOWROOM OPEN  
Monday - Saturday  
9.00am - 4.00pm

0453  
882279  
(24 hrs)

If you can't visit our showroom, send for our free full colour leaflet.



Chalford Bus Terminus, Chalford,  
Nr Stroud, GL6 8HN.

Please send me your FREE colour brochure

Name

Address

Post Code

## Stroudwater Cottage

Available for Weekends  
Midweek Breaks Longer Lets

Very Well Appointed  
Sleeps 4/5



Close to the Canal near Stonehouse

Telephone 0455 611508  
for details

A DONATION TO THE TRUST WILL BE MADE FOR EACH BOOKING RECEIVED AS A RESULT OF THIS ADVERT. PLEASE MENTION THE TROW.

# Banker's Order & Deed of Covenant

I have completed the two forms below and I look forward to receiving my FREE copy of "Churches Along the Cotswold Canals"

---

## BANKER'S ORDER to the Cotswold Canals Trust.

TO.....(Name & Address  
of your Bank)

.....  
Please pay BARCLAYS BANK plc, SOUTHGATE ST, GLOUCESTER, GL1 2DJ (20-33-83)

Credit A/C No.80867861 the sum of £..... on.....(date)and on  
the same date each year until further notice.

SIGNED..... NAME.....

ADDRESS.....

.....ACCOUNT NUMBER.....

This cancels all existing orders to the Cotswold Canals Trust.  
(Office Use Only) Bank, please quote our reference on payments

---

Deed of covenant notes: Fill in your name and address in BLOCK CAPITALS.  
The date should be the same or later than the date of sealing. Insert the  
actual sum of money you are willing to give.

---

## DEED OF COVENANT to THE STROUDWATER, THAMES & SEVERN CANAL TRUST LIMITED

I,..... of.....

.....  
Hereby Covenant with the Stroudwater, Thames & Severn Canal Trust Ltd  
(hereinafter called "The Trust") that for a period of four years from the

date hereto or during my lifetime I will pay to the Trust on the .....

day of .....in every year such a sum as will after deduction of  
income tax at the standard rate for the time being in force amount to .....

pounds. In witness whereof I have set my hand and seal this.....day of

.....19.....

Signed, sealed and delivered by me:- (no further seal necessary)

Signature.....in the presence of

(Signature of Witness).....

Address of Witness.....

.....Occupation.....

---



# A Work Party for You

---

Report by RICHARD ATTWOOD

Trust members and friends will soon have the opportunity to help keep the towpath in the manner which one would expect to find it. A monthly towpath clearance or lock-chamber-exposing work party will be held on the second Sunday morning of each month beginning at 9.30am. Members should bring wellies, gardening gloves and shears/secateurs. Other tools will be provided.

This will commence with the clearing of Siddington Locks, near Cirencester, on Sunday 11th October following work on the Locks by an Employment Action work party during the previous week. For this work party we meet at Siddington playing field near the hump backed bridge over the canal.

On November 8th we meet at the layby near the King & Castle pub in Brimscombe to work on and near Beales Lock.

On December 13th we meet at Chalford playing field to work on the canal towpath and locks in that area.

Trust members and friends will also have the opportunity to meet in congenial surroundings for a good gossip and a talk by an invited speaker beginning in January 1993. Full details of this will be in the Winter TROW.

Make a note in your diary now!

## Grand Draw

---

Promoter DAVID JOWETT

Due to the many requests I have received over the last couple of months it has been decided to enclose more Draw Tickets with this TROW. Please send your completed stubs to me with cheques made payable to "Cotswold Canals Trust". More tickets are available by sending an S.A.E. to the same address as that printed on the tickets. Closing date for receipt by post is 29th October. The Draw will take place on 31st October 1992 at the A.G.M.

Once again, if you do not agree with this form of fund raising please dispose of the tickets and we hope no offence has been caused.

## Cotswold Canals Splash!

---

Cotswold Canals Splash '92 gets under way early on Sunday 13th September. Starting at the new slipway at Eastington, paddle your canoe, dingy or small boat to Ryeford and back. Alternatively, if you have a larger craft, why not trail it to the slipway so you can use this mile of canal with its two restored locks.

If you don't have a boat, you will be able to try a canoe - or just come to see what's going on. We hope to have a steam launch on the canal but whatever happens boat trips will be available throughout the day.

---

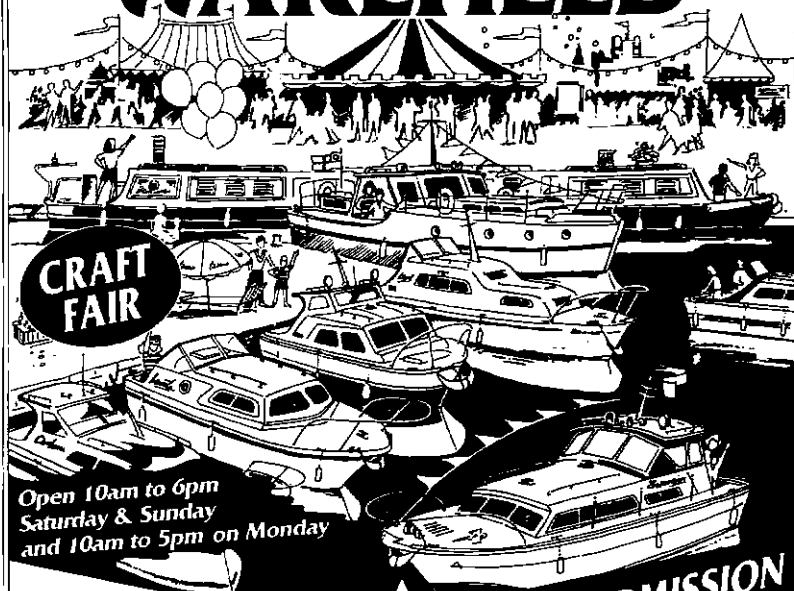
# ENJOY A TASTE OF YORKSHIRE HOSPITALITY...

...at the UK's largest Waterways Event of the Year.

**29th-31st AUGUST 1992**

**PARK HILL, WELBECK**

# WAKEFIELD



**CRAFT  
FAIR**

Open 10am to 6pm  
Saturday & Sunday  
and 10am to 5pm on Monday



The Inland  
Waterways  
Association

**A GREAT  
WEEKEND  
FOR ALL THE  
FAMILY**



**NATIONAL WATERWAYS  
FESTIVAL  
92  
WAKEFIELD**

**FREE ADMISSION  
FREE CAR  
PARKING**

Sponsored by



FOR FURTHER INFORMATION CONTACT JOHN GALE  
NATIONAL WATERWAYS FESTIVALS LIMITED. TEL: 071 722 7217 SUPPORTED BY WAKEFIELD METROPOLITAN DISTRICT COUNCIL

# Sales Order Form

ITEM	PRICE	QTY
*WS ATKINS REPORT (From Saul to Stonehouse)	17.95	
*HALCROW REPORT (From Lechlade to the Water Park)	14.95	
*Around the Cotswold Canals (10 Circular Walks - 2nd Edition)	2.50	
*Restoring the Cotswold Canals	0.50	
<b>*Churches Along the Cotswold Canals - *NEW!*</b>	<b>2.50</b>	
Discovering Canals in Britain (Peter L. Smith)	2.50	
The Flower of Gloster (E. Temple Thurston)	8.95	
The Stroudwater Canal - Vol 1 (Michael Handford)	3.50	
S.T&S Canals in Old Photographs (E. Cuss & S. Gardiner)	7.95	
S.T&S Canals Towpath Guide (M. Handford & D. Viner)	7.50	
Thames & Severn Canal (David Viner)	4.25	
Working Life on Severn & Canal (Hugh Conway-Jones)	7.95	
*The TROW - All issues available	0.50	
*TROW Binder - Holds 12-issues - suitable for all A5 mags.	3.50	
*Map - plan and section of Cotswold Canals	2.95	
*Sweater - Bottle green with embroidered logo      S M L XL	13.95	
*Sweatshirt - grey with embroidered logo          S M L XL	12.95	
*Sweatshirt green with printed logo                S M L XL	10.50	
*Tennis/Sport Shirt - with embroidered logo       S M L XL	11.95	
*T-Shirt - green with printed logo (Child £4.00)   S M L XL	5.00	
*Sew-on Badge - with embroidered logo	2.45	
*Tie - with embroidered logo	5.95	
<b>*Golfing Umbrella (Green/White with printed logos) *NEW!*</b>	<b>15.95</b>	
*Tea Towel - Cotswolds (includes Cotswold Canals)	2.50	
<b>*Carrier Bag Holder *NEW!*</b>	<b>2.95</b>	
*Car Sticker - New design	0.50	
*Self Adhesive sticker - New design	0.50	
*Pen	0.30	
*Pencil with eraser	0.25	
Plant pot - hand painted with canal roses	0.95	
Thimble - Round house	2.95	
Thimble - Buckby can	2.95	
*Thimble - Cotswold Canals Trust	1.95	
*Standard Mug	3.35	
*Half Pint Tankard	3.95	
*Pint Tankard	5.95	
*Milk Jug	6.95	
*Goblet	4.95	
<b>*Coaster *NEW!*</b>	<b>0.65</b>	
<b>*DENOTES SPECIAL COTSWOLD CANALS TRUST ITEM</b>		
Please tick your selections sizes and quantities required. Send the form and remittance to:- <b>Chris Jones, The Courts, 27 Walton Road, Clevedon, Avon, BS21 6AE (Tel.0275 875714)</b> Please make cheques payable to "Cotswold Canals Trust"		TOTAL
	0.65	P & P
NAME.....ADDRESS.....		TOTAL ORDER VALUE
.....		
.....PHONE.....		Aut 92

## A Towpath Conversation at Meadow Mill Spill Weir

---

- VISITOR TO THE AREA: "Still working on this one then?"
- REGULAR VOLUNTEER: "Yes, but we've nearly finished it now."
- VIS: "How long has it taken to do this thing?"
- VOL: "Well, (a long thought) we started it about four years ago, that's when we first found it under the brambles!"
- VIS: "It'll take a long time to do the whole canal if you take that long to do a few bricks!"
- VOL: "We keep getting diverted to other jobs so we haven't actually spent that much time here and when we have been here we keep having to clear up after the vandals have made a mess. We have also done a bit more than lay a few bricks. We've removed a large tree from the front, we have got rid of the brambles and one arch had to be completely rebuilt. All the bricks had to be cleaned off as well."
- VIS: "Oh, I suppose there is a bit more to it than a few bricks."
- VOL: "It would have been a lot easier if we had started with a hole in the bank and a nice heap of new bricks, but that would be new construction and not restoration!"
- VIS: "Who's been working the other side of the road putting that useful looking slipway in? They didn't take long when they got going."
- VOL: "That was one of our diversions."
- VIS: "Who put the gates in at Blunder Lock then? Was that you as well?"
- VOL: "No, we don't do everything. We bought those in, from the Rochdale Canal Workshops. They cost us £23,000 including fitting. We did dig the silt out of the lock and sort out the concreting and repair work though."
- VIS: "I thought you might have made the gates here. It would have been cheaper and it's only a bit of woodwork."
- VOL: "Well we would like to, and it would be cheaper, but we need someone to organise it, design the gates and others to actually do the work."
- VIS: "What's happening with that dredger up at Ryeford? That doesn't seem to get much use these days. I would have thought that you would have a queue waiting to drive that."
- VOL: "We might have a queue, but it needs an overhaul and a new engine."
- VIS: "Can't your plant maintenance people do that?"
- VOL: "The problem is that our plant maintenance people are laying a few bricks here at the moment!"
- VIS: "Oh, Well how many members does the Canal Trust have then?"
- VOL: "It's about 700 at the moment, but there are only about 10 who ever come down here. Some live too far away but most would just like to see it open. You could join us if you like. Someone is here most Saturdays and Sundays from 9 o'clock but you don't have to come every weekend or even for the whole day!"
- VIS: "I don't know anything about bricklaying though."
- VOL: "It's not very difficult. You'd soon get the hang of it."
- VIS: "I get back trouble if I bend too much so it wouldn't suit me anyway."
- VOL: "You could always help with the trip boats, either steering or sitting in the sun taking the money."
- VIS: "You must have plenty of people for that job surely, sitting in the sun! I wish you well. When will Dock Lock be finished. You started that over three years ago. Why don't you get a big digger in to do the job? It would only take a few days to finish that. See you again sometime."
-

## Diary Dates

Mon	7 Sep	Western Branch Meeting
Tue	8 Sep	Summit & Thames End Branch Meeting
Sun	13 Sep	Cotswold Canals Splash! - see p. 16
Sun	20 Sep	Canamble 4, Cricklade to Lechlade - see p. 5
Mon	5 Oct	Western Branch Meeting
Sun	11 Oct	Member's Workparty at Siddington - see p. 16
Tue	13 Oct	Summit & Thames End Branch Meeting
Tue	13 Oct	IWA Event - see below
Tue	20 Oct	Copy Date Winter TROW
Sat	31 Oct	Review of the Year & AGM at Cirencester -incl. Grand Draw!
Sat	31 Oct	Trust Dinner at Cirencester - see p. 9
Mon	2 Nov	Western Branch Meeting
Sun	8 Nov	Member's Workparty at Brimscombe - see p. 16
Tue	10 Nov	Summit & Thames End Branch Meeting
Tue	17 Nov	IWA Event - Richard Attwood's illustrated talk - see below
Mon	7 Dec	Western Branch Meeting
Tue	8 Dec	Summit & Thames End Branch Meeting
Sun	13 Dec	Member's Workparty at Chalford - see p 16
Tue	15 Dec	IWA Event - see below

Western Branch volunteers work most weekends and would welcome your help.

Summit & Thames End Branch usually work the last weekend of each month.

If you would like to offer your help, please contact the appropriate person.

Members and friends are welcome at Branch Meetings and Special Events. Western Branch meet at 7.30pm at the Imperial Hotel, Stroud. Summit & Thames End Branch meet at 8.00pm at the "Thames Head" pub, near Cirencester on the Tetbury Road (A433).

<b>IWA &amp; FRIENDS OF THE MUSEUM EVENTS</b>		Meet at 7.30pm at the Museum Schools Room National Waterways Museum (except 17 Nov)
Tue	13 Oct	LONDON RIVER by Brian Cornell, ex-Thames waterman and lighterman
Tue	17 Nov	ALONG THE COTSWOLD CANALS An illustrated talk by Richard Attwood of the COTSWOLD CANALS TRUST 7.30 at Tewkesbury Marina Yacht Club
Tue	15 Dec	MODELLING SEVERN TROWS by Peter Wallace who made the model for the Museum



# Cotswold Canals Trust

GENERAL SECRETARY	COMMANDER NICHOLAS WRIGHT	(Office Cirencester 0285 643440)
MEMBERSHIP	FREEPOST (GL65)	P.O. Box 71. Stroud, Glos., GL6 7BR
SALES MANAGER	CHRIS JONES	The Courts, 27 Walton Road, Clevedon, Avon, BS21 6AE (Clevedon 0272 875714)
TROW EDITOR	DAVID JOWETT	11 Upper Leazes, Stroud, Glos., GL5 1LA (Stroud 0453 755535)

## SUMMIT & THAMES END BRANCH

CHAIRMAN	ROBIN HALLIDAY	16 River Park, Marlborough, Wilts. SN8 1NH (Marlborough 0672 513400)
SECRETARY	JAMES KING	Moordown, Northfield Road, Tetbury, Glos. GL8 8HE (Tetbury 0666 502797)
TREASURER	JOHN LUCAS	Linquenda, Winstone, Nr. Cirencester, Glos. GL7 7JZ (Miserden 028 582 587)

## WESTERN BRANCH

CHAIRMAN	JOHN FERRIS	23 Humphreys Close, Lower Randwick, Stroud, Glos., GL5 4AZ (Stroud 766072)
DEPUTY CHAIRMAN	NICK PARKER	36 Water Lane, Wotton-Under-Edge, Glos. (Dursley 0453 521106)
EVENTS ORGANISER	PETE EASTO	11 Hopton Road, Cam, Dursley, Glos. GL11 5NZ (Dursley 0453 545042)

## VOLUNTEER GROUPS

WESTERN BRANCH	DOUG BLAKE	19 Stratton Road, Gloucester. (Gloucester. 0452 415843)
SUMMIT & THAMES END	ROBIN HALLIDAY	16 River Park, Marlborough, Wilts., SN8 1NH (Marlborough 0672 513400)
TRIP BOAT CO-ORDINATOR	AMANDA FISK	11 Upper Leazes, Stroud, Glos., GL5 1LA (Stroud 0453 755535)

