

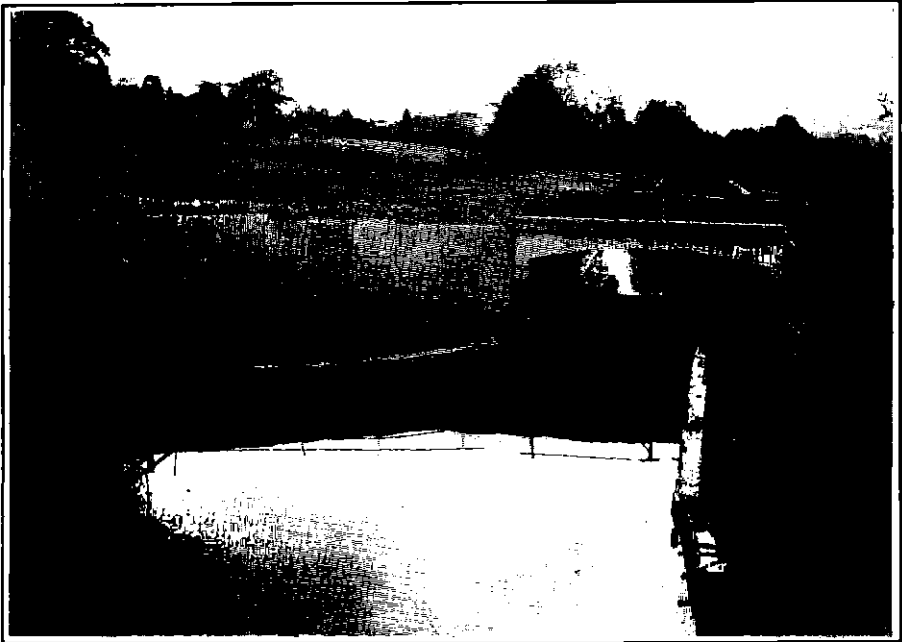
# Trow

THE OFFICIAL MAGAZINE  
FOR MEMBERS AND FRIENDS  
WORKING TO RESTORE THE  
COTSWOLD CANALS

No. 79

WINTER 1992

50p



Cotswold Canals  
Trust

### COPY DATES

SPRING.....20th JANUARY  
SUMMER.....20th APRIL  
AUTUMN.....20th JULY  
WINTER.....20th OCTOBER

THE VIEWS & OPINIONS IN  
THIS MAGAZINE DO NOT  
NECESSARILY REPRESENT THE  
VIEWS & OPINIONS OF THE  
COTSWOLD CANALS TRUST

## Contents

Reflections of the General Secretary	2
Field Officer's Report	4
Summit & Thames End Branch	5
Western Work	6
Dig Deep	8
Membership Matters	9
The "National"	10
Nuts & Bolts No 3 - Dredging	12
Tales from the Lockside	13
A Work Party for You	16
Canamble 92	19
Dates for Your Diary	20

Published by the Cotswold Canals Trust  
Compilation and layout by David Jowett  
Printed by Astral Printing & Stationers, Picadilly Mills  
Lower Street, Stroud, Glos. (Tel: Stroud 0453 752040)

FRONT COVER: The new Haywards Bridge by the Horsetrough Roundabout  
near Stonehouse, courtesy G.C.C.

BACK COVER : Our new D&K 360 degree long-reach excavator during trials  
- see p. 15 for brief details and next TROW for full article

BELOW: The Sales Roadshow at Wakefield on Saturday morning before  
the rain and mud came - see p. 10!



## Reflections of the General Secretary

---

**Between Two Rivers:** If you had been at Wakefield for the IWA National Waterways Festival this year you might have thought a sea of mud rather than our two rivers, the Thames & Severn. Is this the furthest north that the Trust has operated at a waterways event? Possibly so, but nevertheless well worth the effort involved in participating in such an event. Our special flagpole, supporting the highest flag yet again, suffered a major fracture during the Saturday night storms, but even foreshortened the flag still flew bravely over our stand which also carried a banner with our new catchphrase - "Between Two Rivers".

Although I may be biased there was a very professional approach both to display and sales, including a continuous showing of the WRG "Big Dig" video and a rolling slide show of the Cotswold Canals. So congratulations and thanks to all those who took part; the regular team as well as members from around the country.

Why go so far afield for this event? To support the IWA, naturally, but also to spread our own news, how restoration progresses, to help increase membership (currently at about 10% p.a.) and to meet people; lots of people who braved the elements but also the IWA, BW, WRG, DoE and many others who we hope may be encouraged to help the Trust in future.

Now closer to home; how are we doing? The major effort is at Dock Lock, in preparation for lock repairs due to start even as I write. Newtown and Blunder Locks, the latter resplendent with the new Prince of Wales re-opening plaque, are the showpieces.

Elsewhere, encouragingly, all sorts of things are happening. The new Horsetrough Road Bridge over the canal is almost completed, thanks to Gloucestershire County Council Highways Department. This will be followed by the Ship Inn Bridge, now due to start in March 1994 but in the meanwhile the Stroud Ring Road to the south of Ebley will progress, which will at least speed my route between Cirencester and Eastington. In Stroud itself the Stroud Valleys Project awaits funds to purchase two top gates for Wallbridge Lock, which will complete this very important lock right in the centre of town. We then hope that a combined site management plan involving the Trust, Stroud Valleys Project and the Gloucestershire Wildlife Trust will be drawn up to progress work up the Golden Valley to the west portal of Sapperton Tunnel.

Stroud District Council has recently placed a contract for further engineering feasibility studies to be undertaken by W S Atkins between the Ocean and the west portal. This report will complete the western section of the canal leaving only the section between Cricklade and the east portal to be completed. As well as identifying major problems, it will report on the key issue of water supply on the upper reaches of the canal.

Further east, the Halcrow Report, covering navigation feasibility between Lechlade and the Cotswold Water Park is being studied in real earnest as the Trust turns its attention to this area. With the Latton bypass decision imminent the Trust needs to ensure that any change of land usage that comes with the new road is turned to our best advantage. Gravel extraction in this area of both Gloucestershire and Wiltshire is a real

probability along practically the whole eastern section of the canal. This will in time generate further pits which can be used for water storage if looking at long term water transfer, or in the shorter term as canal reservoirs, an option never before available. And to use the canal as a major drainage system to ensure dry rather than wet gravel extraction could be an added advantage if properly planned in the early stages.

The linking of the East and West Water Parks will also be of strategic importance to the canals' future. With both the NRA and BW carrying out engineering feasibility studies for long term water transfer, the eastern section of the canal could be progressed fairly rapidly.

On the ground the "Dig Deep" project is due to start in November at Boxwell Springs Lock. Originally this group was due to rebuild Humpback Lock but due to a combination of problems thrown up by SSSIs, badgers and access this lock will now be the second one tackled. Also in 1993 we hope that a WRG Summer Camp may undertake work at Eysey Lock, deep in the countryside between the Thames and the Wilts/Glos border.

Here in the Cirencester office we are not sharpening our spades or bill hooks. Rather the word processor has been working overtime and has gone on strike so no more appeal letters for a week or two. Looking for financial help is our primary task but the current economic malaise does make life difficult. Our need for core funds to support the administration to ensure it survives is paramount, with the need to obtain matching funds for direct grant assistance an equal priority. We are prepared to tackle any problems but your advice, assistance or guidance with fund raising matters would be most warmly welcomed.

Christmas; yes, it is heading rapidly towards us. How many shopping days etc, but from Maureen and myself in the Cirencester Office best wishes to all our members and other readers for a most happy Christmas and successful New Year.

Let me leave you with one thought: - Have you given membership to a relation or friend for Christmas? There's no time like the present! What a wonderful way to help bring the two rivers together more quickly.

<b>For Sale</b>	<b>AMSTRAD 9512 PERSONAL COMPUTER WORD PROCESSOR</b>
	<b>complete with Amstrad Daisywheel Printer and Locoscript Software</b>
	<b>The ideal office or home workstation</b>
	<b>£200</b>
	<b>Please contact Chris Jones, The Courts, 27 Walton Road, Clevedon, Avon Phone (0275) 875714 Mobile (0831) 344859</b>

# Field Officer's Report

---

## **Water Transfer**

The study into the possibility of using the Stroudwater Navigation and Thames & Severn Canal for water transfer is under way. It is one of five alternatives for moving water from the Severn to the Thames, the other four all involve long pipelines and/or tunnelling. The outcome of this study is awaited with great interest as it could transform the canal restoration timescales. Since this project would generate much employment, it would be beneficial if it were executed sooner rather than later.

## **Latton Bypass**

The Public Inquiry Inspector has now issued his report and a decision concerning the canal bridge is awaited with interest. It is likely that we will know the outcome in time for the next TROW. There will, of course, be a terrible fuss if the wrong decision is made.

## **M.O.D. Pipeline**

The M.O.D. have now been asked twice for a copy of the wayleave giving them permission to build their pipeline over the Stroudwater Navigation near the A38. The Company of Proprietors cannot find any record of any such permission having been granted - Oh dear.

## People

---

Alison Ruckert recently resigned her position as Treasurer due to the pressure of her accountancy day job and time required for studying for professional qualifications. The Trust Council thank Alison for her work during the past year and wish her well in future examinations.

Following the resignation of Chris Lavis & Co, who were Auditors of the Trust Accounts, we are pleased to welcome Chris Lavis as the new Trust Treasurer.

There have been changes at the Summit & Thames End Branch too. Robin Halliday has handed over to Jim King who becomes Chairman. Peter Chadwick becomes Secretary. Peter is a former Trust Council Member and often contributes photographs to Trust publications.

## As Seen On T.V.

---

As forewarned in the Autumn TROW, the Clive Gunnell canal walk programmes are due to be shown on HTV from Sunday 10th January at 2.00pm and then on alternate Sundays (every other Sunday will show a farming programme). A total of ten programmes will be shown.

As well as many familiar views and canal scenes this may be an opportunity to recognise a few familiar faces as the Trust has had a considerable input. However, do check your TV magazines as HTV have warned that the time could possible change.....Good Viewing!

---

# Summit & Thames End Branch

## Report by ROBIN HALLIDAY

Looking back, the Autumn of 1992 will be remembered for the return of the rains which created havoc in many areas of the country with floods and high water levels in most rivers. In the Thames Summit area the heavy rain resulted in the highest recorded levels, for the time of year, at the Coates end of the tunnel since regular boat trips began. The level has since subsided to about 18 inches and the Branch will watch subsequent levels with interest. Normally the tunnel boating season starts at the end of December, but this year may herald a change with trips possibly beginning in November this year.

The boat is ready for relaunching following a thorough overhaul and repaint. After five years of sterling service the boat is beginning to show signs of its age although it should provide several years more. A crew rota is being planned and we are always glad to hear from any volunteer who can man the boat for a few hours on a Sunday. This year, a new in-tunnel charging system will eliminate the job of hauling batteries up and down the slope to the tunnel mouth. For enquiries about crewing please contact myself on 0672 513400 or Jim King on 0666 502797.

Over the past few months the inside of the tunnel portal has received the attentions of a skilled stone mason in the person of Alan Byrne from Gloucester. He has finished repair work for the time being but we suspect that we may be glad of his services again. Many thanks to Alan. The Branch has also been ably assisted in towpath clearance by visiting scout groups from Hanwell in London and from Highworth. In October an Employment Action team carried out a thorough tidy-up at Kings Reach. The Branch are now well set for another boating season at Coates while we eagerly await the outcome of the Latton Bypass Inquiry and the NRA Water Transfer survey.

**Boat Licenses for the Stroudwater Navigation** are available from Pike Lock House or the Cirencester office. They are issued with a set of terms and conditions which point out that the canal is under restoration and therefore certain shortcomings and inconveniences must be anticipated. There are two types of license, powered (with use of locks) and unpowered with no differentiation on boat size. The charges are:-

	Day	Week	Month
Unpowered	£1	£2	£10
Powered	£5	£10	£25

These licenses do not include mooring except short term whilst in use, but use of the slipway at Eastington is included. Licenses only cover those sections of the canal where the Trust has the agreement of the owners.

The Trust is grateful to David Hutchings and the Upper Avon Navigation Trust for the donation of a number of sets of second hand paddle gear which had become surplus to their requirements following an upgrading programme. Although well used, these sets should yield enough serviceable parts to fit out several locks.

# Western Work

---

## Report by KEN BAILEY

Meadow Mill spill weir brick work and concreting are now complete and hopefully are good for a long time to come. It will be good to see water running through here once again but that will have to wait until work on the chamber of Dock Lock is complete.

The bed of the canal between Meadow Mill spill weir and Dock Lock has been cleared of undergrowth and a drainage channel dug by hand down the centre to allow for the excavation and rebuilding work in the bottom of Dock Lock. While digging this channel it was discovered that there is only about one foot of silt at the weir end building to around two feet just outside the lock. This, like the pound above Pike Lock, would give a minimum of four feet of water when the pound is reflooded to working level - better than many operational waterways!

Timber stakes have been driven in by an Employment Action Scheme along the canal bank below Dock Lock to act as piling. These will enable us to lose some of the infill material from Dock Lock resulting in a 12' to 15' wide topath which will allow easy transport of building materials and equipment to Dock Lock.

The move from the workshop by Blunder Lock is complete and most items have found a new home in the new compound. The workshop is currently being dismantled by volunteers from the Gloucestershire and Warwickshire Railway (cleverly abbreviates to GWR). This restoration group will find a new home for the sectional building which was originally railway based anyway. The old workshop site will be landscaped in due course by the Stroud Valleys Project. Several picnic tables are currently being stored in our compound ready for completion of that work.

We now have a plaque on a balance beam at Blunder Lock to mark its official opening by HRH Prince Charles earlier this year.

The work to construct the new Haywards Bridge for the Ebley Bypass near Stonehouse is almost complete. The temporary dams across the canal, which were constructed to allow the contractors to work in the dry, have now been removed and the water levels "downstream", towards Eastington, have returned to normal. The restored flow cleared most of the duckweed which had covered the canal during the summer. The work on the next phase of the bypass past the rear of the Ship Inn at Stonehouse may be delayed by the current round of spending cuts. This phase will replace the infilled bridge by the Ship with a new navigable bridge thereby removing another blockage.

Regular workers from the West End have had two "away" tasks recently. Firstly a couple of us delivered some sections of steel fencing to the Daneway Portal of Sapperton Tunnel to enable the Summit & Thames End Branch to suitably fence the entrance and prevent people entering. Secondly, six of us carried out an advance clearance of some of the larger trees growing from the walls of Siddington Locks prior to the members work party there. Several more days work will be required in this area to finally clear the larger trees which are starting to cause damage to the chamber walls.



ABOVE: Timber stakes in place below Dock Lock ready to accept the infill  
BELOW: There goes the workshop - on its way to a new home at Toddington





# Dig Deep

---

Report by NEIL RITCHIE

DIG DEEP..... no, not an exhortation to delve into the wallet again as the Season of Goodwill approaches - this is a scheme to achieve more effective restoration of our waterways by focussing the efforts of volunteer workers.

LONDON WRG, KESCRG and NWP (of whom later) are well established volunteer groups who have worked in just about every far flung outpost of the canal system, from Huddlesfield Narrow in the north to Montgomery in the west and Grand Western in the south, achieving an enviable reputation for work skills and training in the process. Canal restoration has now reached the stage where most of the "big" projects are nearing completion or sites are just not being brought "on-line" quickly enough. A pool of quality skills was in danger of being dispersed unnecessarily. DIG DEEP was born out of a desire to pool the joint resources of three restoration bodies on a small selection of carefully chosen projects so that canal societies could get the best out of visiting restoration groups and the volunteers could have a guaranteed continuity of work.

We are very pleased that proposals put forward by the Cotswold Canals Trust for specific work in the area of South Cerney were accepted as one of the few sites in the country which met all the criteria. The first working weekend should just have taken place by the time this TROW reaches you.

Although primarily a DIG DEEP project, it has been emphasised that it is not exclusively so. In other words, all Canal Trust members are not only welcome but are **expected** to be present, not only at the weekends on the timetable but as often as possible. So if there are any potential navvies out there who have never yet got their wellies muddy, but are itching to learn the joys of scrub bashing, mud digging, brick laying, mud digging, hedge laying, mud digging, coppicing, mud digging, dry-stone walling and mud digging please give me a phone call and I will point you in the right direction! (Eve: 0242 581415. Work: 0452 857017. Mobile 0831 267702).

## THE DIG DEEP GROUPS.

LONDON WRG (LONDON WATERWAY RECOVERY GROUP) is the direct descendant of working parties organised by the old London and Home Counties Branch of the IWA - the vehicle used by Graham Palmer to organise and establish regular work forces to any restoration projects that required manpower. Out of these grew WRG (Waterway Recovery Group) and the other groups that are active today. Since the 1960s regular working parties have been organised from the London area.. In that time the size of the group has varied considerably, mustering 20 or more in the good times and around four in the bad. At present, numbers average a dozen or so for each time out - not a large group but a consistent record. Digs are arranged on a three week cycle (although I could think of a better means of transport!)

KESCRG (KENT & EAST SUSEX CANAL RESTORATION GROUP) was formed in 1977 after a few people had attended a "Big Dig" on the Basingstoke Canal. For many years the group worked mainly on the Basingstoke with visits to several projects much further afield. The group has a great deal of experience in lock chamber work, both in demolition and construction, with a large number

---

---

of experienced bricklayers, some of whom are able to undertake quite intricate work. They take every opportunity to continue a programme of training volunteers to use plant or acquire bricklaying skills.

NWPG (NEWBURY WORKING PARTY GROUP) originated in 1981 in an endeavour to resume volunteer work on the Kennet & Avon Canal and included a nucleus of volunteers who had worked on the restoration of Bull's Lock, Newbury during the mid 1970s. A major K & A project involved the construction of 26 wooden bridges for Caen Hill flight of locks at Deveses. This included detailed planning and liaison with British Waterways allowing the group to develop a wide range of carpentry and construction skills. The bridge project was successfully completed in 1989. Specific talents include precision demolition, kango work, bricklaying, concreting, cill laying, coping stone laying and plant maintenance.

---

## Membership Matters

---

This quarter we are pleased to welcome the following new members.

Mr & Mrs P Noyce, Maidenhead, Berks  
David Williams, Walthamstow, London  
Mr & Mrs Hampton-Matthews, North Nibley  
Mr RI Stephens, Hardwicke, Gloucester  
Mr J Lower, Chesterfield, Derbyshire  
Mrs M A Drew, Chipping Warden, Oxon  
Mr JS Hay, Colyton, Devon  
Mr DM Williamson, Berkeley, Glos  
Mr BD Castle, Marlborough  
Riddley Windland, Eastington, Glos  
Mr D Tizzard, Crowthorne, Berks  
Mr & Mrs Winter, Thorpe Bay, Essex  
Mr B G Little, Dunstable, Beds  
Mr AE Moore, Cheltenham  
Mr N A Mills, Cricklade  
Geraldine Piper, South Cerney, Glos  
Mr RS Edgar, South Cerney, Glos  
Mr T Barber, Newcastle-upon-Tyne  
Mr C Yates, Kemble, Cirencester.

South Cerney Parish Council  
Thrupp Parish Council  
Stonehouse Town Council  
Stroud Town Council  
Cricklade Town Council  
Siddington Parish Council  
Mrs JV Gilbert, Frinton-on-Sea  
Mrs B Clark, Cirencester  
Mr M Perry, Chalford, Stroud  
Mr PM King, Tewkesbury  
Mr SJ Mogford, Stroud  
Mr PR Williams, Cam, Glos  
Mr P Beasley, Cirencester  
Mr R Sleeman, Somerford Keynes  
Mrs M Lucas, Woolley, Wakefield  
EA & RM Connors, Hereford  
Mr SJ Hill, Chalford, Stroud  
Mr R Meek, London

---

## Gift Aid

---

Gift Aid is a well established scheme for a Charity such as ours to receive a donation or gift, and has benefits for high tax paying donors as well. Recent changes to the scheme have introduced a lower minimum qualifying gift of £400.

Should you be considering a donation of £400 or more please remember this system so that the Trust benefits from a tax refund of £133.33, and the high rate tax donor can also reclaim a rebate. Please contact the Canal Office in Cirencester if you want further information.

---

# The 'National'

Sales Manager CHRIS JONES

"Has anybody seen my other wellie.....?"

Picture the scene if you would. A reclaimed colliery tip in Yorkshire on an August Bank Holiday Weekend. Picture also an ample covering of clay laid over the entire area. Then imagine the heaviest rain and the strongest gales you have ever encountered. Double the force of both and guess what would happen?

Well it did! Mud the like you have never seen before. Strangely enough we were not alone in this situation with 97,000 other people wading, slipping and struggling through awful conditions during the three days of the Inland Waterways Association's National Waterways Festival at Wakefield.

In spite of the appalling conditions we had a great festival. As usual this event was targeted as our annual "BIG DO" and to produce this appearance a long distance from home takes a great deal of effort from lots of people. Many thanks to all the team who were up to their ankles in it at Wakefield and for all their commitment throughout this very busy year. Thanks also to Neil Ritchie and the boys at Contract Sign Services for producing the biggest banner in Yorkshire. By the way, has anybody found my other wellie yet.....?



In the past three years we have always hired a marquee to produce the National Waterways Festival effect. Since Wakefield we have at long last found and purchased our very own unit. This green and white marquee is 15ft by 12ft and will become the standard structure for all future outdoor events, and not just a once a year wonder. It will appear at the start of the 1993 season. Do come and see the Roadshow and how things are moving forward with the Cotswold Canals Trust!

# Your Trust Needs You

---

## **Publicity Officer**

A Publicity Officer is needed to write and send diary dates or reports of Canal Trust events to the local and waterways press.

## **Working Party Organisers**

Many organisations ask to help restore the Cotswold Canals. We want to encourage more of these groups but need a small team of Trust members to liaise with them and organise their visit. This will include choosing a work site, arranging accommodation (if required) from a list of suitable village halls etc. Nearer the arranged date a programme of work will be made and necessary tools for the job and size of group sorted out. On the arranged dates the working party organiser will meet the group and set them to work. The organiser will not be expected to get their hands dirty or even stay with the visiting group for every minute of their stay. In all of these tasks those members of the Canal Trust involved in practical works will be available to offer advice and assist with the more complicated tasks.

## **Talks Secretary**

The Trust Council would like to hold monthly meetings, during the winter, where members can meet for a natter and listen to an invited speaker. Organising a suitable village hall is not a problem but for the meetings to be a success we need a Talks Secretary who will contact possible speakers (there is no shortage of suggestions) and arrange for them to give a talk on their chosen subject on one of half a dozen dates during winter months.

## **Catering Team**

The Canal Trust holds a number of events during the year, such as the Biathlon and Splash. For these events everyone rallies round to provide suitable refreshments.

It would be a great help if a group of people could be called upon to provide catering, ranging from "tea and biscuits" at social evenings to buffet lunches for visiting officials, from the Inland Waterways Association for example.

## **Trip Boat Helpers at Sapperton Tunnel and Eastington**

Trip boats at Sapperton Tunnel operate from Coates porta), near the Tunnel House Inn, from December to April. The Eastington trip boats operate from Eastington Wharf from May to October. Helpers are needed to crew the boats, prepare the boats, collect fares, talk to visitors and phone around potential crew members to make a crew rota.

**If you can help with any of these, please contact the Cirencester Office**

---

# The Nuts & Bolts Series – No. 3 Dredging

---

KEN BAILEY

The Dredging fleet consists of the four largest pieces of equipment that the Trust owns. The fleet consists of a Floating Dredger, a Push Tug and two Mud Hopper Barges.

**THE TUG BOAT**, Goliath, was purchased from Wessex Water in 1981. This vessel is currently used to move our mud barges and small items of plant along the Ryeford stretch of the canal. The tug was originally refurbished by Naval Officers of St. George Division, Britannia Royal Naval College at Dartmouth when they visited the canal for a couple of days early in 1982. It was launched later that year from a site alongside the old Wycliffe School Boat House.

The tug was used for several years by the M.S.C. scheme as part of the dredging operation on the Ryeford pound. While it is in reasonable mechanical order at present, it could do with a new lick of paint and a general tidy-up all round.

Facts & Figures: Length: 24ft    Beam: 8ft    Draught: 2ft  
Engine: Lister HA3 with marine gearbox    36 HP Air Cooled Diesel  
Open deck wheel steered with rear engine cabin and forward crew cabin

**THE MUD BARGES** were purchased from Wessex Water towards the end of January 1981. They were both transported from Bath to the canal alongside Upper Mills Trading Estate over a very foggy weekend resulting in a very slow journey. After some refurbishment work and fitting of a timber lining in the bottom of the hold, both barges were used to shift silt from the dredger to the tipping site on the Ryeford pound.

At the end of 1988 one of the barges was craned out again at Upper Mills and transferred to the other side of the road where it was returned to the water and floated downstream to Nutshell Bridge. Here, it was sunk and used to support both a temporary footbridge and also support the formers while Nutshell Bridge underwent major repair work. This one barge is currently moored slightly further west waiting for the day that either the obstruction at The Ship public house is removed or the Ocean Railway Bridge is replaced.

Facts & Figures: Length: 52ft    Beam: 15ft    Unladen Weight 18 tonnes

## Insurance

---

KEN BAILEY

Can I remind those who wish to drive/operate Canal Trust plant that they must hold an IWA/WRG insurance card valid for that piece of equipment. Application forms are available from myself. For those wishing to be trained to use various items, please contact me and I will try to arrange some sessions and information early in the new year.

---

# Tales from the Lockside

---

KEN BURGIN

As many of you know, I live in the lock keeper's house next to Pike Lock on the Eastington Flight. Looking out the back of the house we can see the restored section of the canal to Blunder Lock, to the side the partially restored Pike Lock with its stop planks, and to the front the demolished Pike Bridge culvert.

The canal itself is a constant source of pleasure and entertainment. We are lucky enough to have a boat and on many occasions we have taken it up to Newtown Roving Bridge where that \*\*\*\* water pipe prevents further progress. The round trip takes an hour and a half (if we don't stop to flap our chops as my wife puts it).

Once the canal was back in water, we fulfilled a promise to the children and bought some ducks. We bought two, left them to their own devices and ended up with eleven. At first we kept two of the small ducklings in the house as an insurance policy against mink attack. Their ability to escape, coupled with an almost infinite capacity to generate poo, soon ensured they were exiled to the garden!

Ducks are very stupid - you only appreciate this if you own some. Last week, one of them was standing preening itself on the stop planks when it lost its balance and fell into Pike Lock. Now this had happened before and the standard procedure is to get a ladder, climb down to the top sill, corner the duck against the base of the stop planks and grab it. This time, the duck circumnavigated its captor and jumped into the main part of the chamber where the water is seven feet deep. It then proceeded to quack its head off and, before we knew where we were, four others flew in and joined it! Needless to say, they either cannot or do not have the sense to fly back out.

Much time was then spent trying to catch the ducks. The following day we managed to get out the two tame ones which started life in the house using bribery. Three attempts and two days later we caught two more, leaving only the original which then started quacking its head off again (in vain this time - the rest were locked up). It was finally caught by using a long rope to force it to the tail of the lock where it was grabbed and returned to its family none the worse for its ordeal.

Perhaps one day they will lay us some eggs for our trouble!

We are indebted to the support given to the Trust this year by Stroud Valleys Buses and their volunteer drivers, John Evans, Martin Griffiths and Chris Blick. They supported all four of the Canamble '92 walks and the visit by the Southern Canals Association.

# Boto-X

---

This major fund raising event is held on the Kennet & Avon Canal at Caen Hill fight of locks at Devizes. Boto-X has been run over the last seven years as a great fun event, with up to 130 eight people crews taking part, but regretfully due to acute water shortage the 1992 event had to be cancelled.

Next year Boto-X will be held on 22nd and 23rd May, slightly earlier than usual with the hope that there will be water, and that it will be warm enough.

The event is a race for inflatable boats down and up five of the flight side ponds. Boats are provided, so only eight strong and true paddlers are needed, four down and the remainder back up the hill. It is difficult to know which is more exhausting.

Can we, the Cotswold Canals Trust raise a team to take part next year? Why not put a marker in your diary and we will keep you fed with further information.

---

## Grand Draw

---

Promoter DAVID JOWETT

Early this year at a Western Branch meeting a suggestion was made that the Trust should hold a Draw, as it was some time since this had been done. As a result, I am pleased to report that the Trust is now better off by more than £1,200. This is thanks to the efforts of our members and friends who bought and sold tickets up and down the country.

Whilst I do not want to single out individual efforts I must thank Alan Byrne of Gloucester who sold £263 worth of tickets and Emma Wright who ploughed through the mud at the IWA National Waterways Festival to sell around £115 worth.

Thanks to all who participated. The winners were as follows.

Prize	Ticket	Winner	
£250	16061	G Davis,	Paganhill, Stroud.
£100	23190	F Beetlestone	Enfield, Middlesex
£ 10	03160	J Gallagher	York
£ 10	13935	M Hynd	Gloucester
£ 10	16432	W Spiller	Cheltenham, Glos
£ 10	19910	G Branner	Witney, Oxon
£ 10	15741	D Coleman	Malmesbury, Wilts
£ 10	15168	G Watkins	Slimbridge, Glos
£ 10	16059	K Eaton	Paganhill, Stroud
£ 10	15201	C Garner	Swindon, Wilts
£ 10	03576	D Johnson	Warrington
£ 10	19049	B Haughey	Preston, Lancs

---

# Information Received

**KEN BAILEY**

Having requested information about plant and bridge sections, I was pleased when the phone started ringing and envelopes fell through my letter box.

Thanks to a number of people who provided technical information and addresses of culvert manufacturers. Unfortunately I have not obtained prices yet from the four firms contacted but progress is being made.

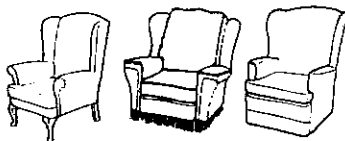
Thanks also to Mr Greenslade of Exeter who provided details of a company selling various items of plant. As a result the Trust has now purchased an O&K MH 4 wheeled excavator and also a 2½ tonne 4WD dumper which will be going into action shortly. More information about these and our International Excavator will appear in a future "Nuts & Bolts" article.

## CHALFORD CHAIRS

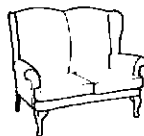
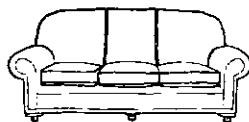
**OPEN:**  
Monday - Saturday  
9.00 am to 4.00 pm

Chalford Chairs Ltd  
Chalford Bus Terminus  
Nr Stroud, Glos. GL6 8HN  
Tel: Brimscombe (0453) 882279

# See our furniture



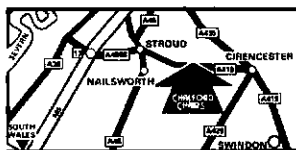
# for yourself



## How to find us

Chalford Chairs is situated on the main A419 road in the village of Chalford, which is roughly half-way between Cirencester and Stroud.

We're within easy reach of most major centres, and the factory itself is picturesquely situated at the head of the Golden Valley, one of the prettiest spots in the Cotswolds.





# The Ryeford Swans

---

Many pairs of swans take advantage of the restored lengths of canal and are a real attraction to people who enjoy a canalside walk.

Members of the Trust were as shocked as residents at the senseless killing of two Mute swans at Ryeford on 14th September. The swans which were found floating in the canal had probably bled to death after being shot by more than 20 air rifle pellets.

The incident has received extensive coverage in the local press. So far, £900 has been pledged to a reward fund by outraged people who hope that this may lead to the arrest of the criminals.

As the TROW went to press, the police released descriptions of two white males they wish to trace. The first is aged 19, 5ft 10ins tall of slim build with mousy short hair. He was seen with a man of about 22 who was taller and had light brown hair.

Although we feel sure readers would have already acted, witnesses who saw the two by the canal at Ryeford, between 7.30pm and 11.30pm on 14th September, should contact WPC Carol Mein at Stroud Police Station (Phone 0453 766311).

## A Work Party for You

---

The monthly winter scrub clearance continues on the second Sunday of each month. Work begins at 9.30am and members should bring wellies, gardening gloves and garden shears or secateurs. Other tools will be provided.

**9/10 JAN - PUCK MILL** An opportunity to see the Trust Council turn out in force and get their hands dirty! Meet at the layby at Bakers Mill and walk up the towpath for 400 metres. This is a special two day event to manage the section of Thames & Severn Canal owned by the Canal Trust.

**14 FEB - SIDDINGTON** A return visit to continue clearing many years of neglect from the middle locks of the Siddington Flight. Meet at the top end of the flight by the playing field.

**14 MAR - EBLEY INFILL** A year ago a very successful days work cleared huge bramble bushes from the infilled bed of the Stroudwater Navigation. There are many more bramble bushes for this years visit! Meet at the visitor's car park at Ebley Mill.

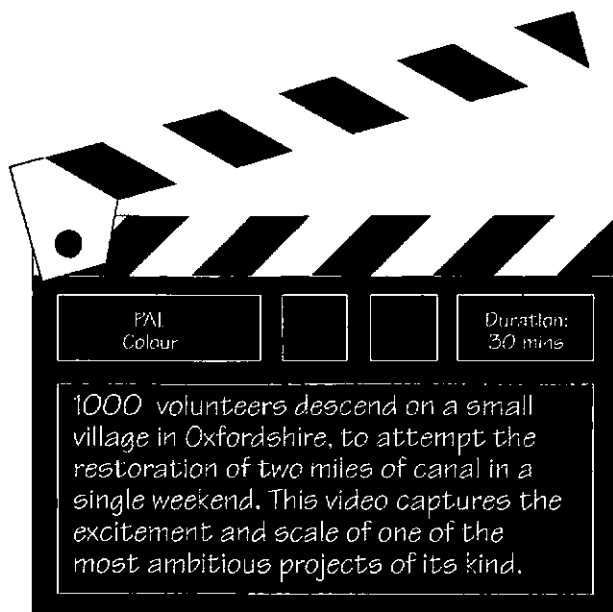
Trust Members will also have the opportunity to meet in congenial surroundings for a good gossip and a slide show of the Cotswold Canals in years past at Sapperton Village Hall on Thursday 11th March at 7.30pm

---

# Big Dig 1991

## The Video

Narrated by Andrew Crawford



**Price £ 9.95**

AVAILABLE FROM SALES DEPT

- SEE OVER PAGE

This professional quality videotape has been produced on a non-profit basis profits from the sale are donated to canal restoration projects.

# Sales Order Form

ITEM	PRICE £	QTY
*CHRISTMAS CARD with lock gate design	0.25	
*WS ATKINS REPORT (From Saul to Stonehouse)	9.95	
*HALCROW REPORT (From Lechlade to the Water Park)	14.95	
*Around the Cotswold Canals (10 Circular Walks - 2nd Edition)	2.50	
*Restoring the Cotswold Canals	0.50	
*Churches Along the Cotswold Canals - <b>*NEW!*</b>	<b>2.50</b>	
Discovering Canals in Britain (Peter L. Smith)	2.50	
The Flower of Gloster (E. Temple Thurston)	8.95	
The Stroudwater Canal - Vol 1 (Michael Handford)	3.50	
S.T&S Canals in Old Photographs (E. Cuss & S. Gardiner)	7.95	
S.T&S Canals Towpath Guide (M. Handford & D. Viner)	7.50	
Thames & Severn Canal (David Viner)	4.25	
Working Life on Severn & Canal (Hugh Conway-Jones)	7.95	
*The TROW - All issues available	0.50	
*TROW Binder - Holds 12 issues - suitable for all A5 mags.	3.50	
*Map - plan and section of Cotswold Canals	2.95	
<b>BIG DIG VIDED Full description on previous page</b>	<b>9.95</b>	
*Sweater - Bottle green with embroidered logo	S M L XL 13.95	
*Sweatshirt - grey with embroidered logo	S M L XL 12.95	
*Sweatshirt green with printed logo	S M L XL 10.50	
*Tennis/Sport Shirt - with embroidered logo	S M L XL 11.95	
*T-Shirt - green with printed logo (Child £4.00)	S M L XL 5.00	
*Sew-on Badge - with embroidered logo	2.45	
*Tie - with embroidered logo	5.95	
*Golfing Umbrella (Green/White with printed logos) <b>*NEW!*</b>	<b>15.95</b>	
*Tea Towel - Cotswolds (includes Cotswold Canals)	2.50	
*Carrier Bag Holder <b>*NEW!*</b>	<b>2.95</b>	
*Car Sticker - New design	0.50	
*Self Adhesive sticker - New design	0.50	
*Pen	0.30	
*Pencil with eraser	0.25	
Thimble - Round house	2.95	
Thimble - Buckby can	2.95	
*Thimble - Cotswold Canals Trust	1.95	
*Standard Mug	3.35	
*Half Pint Tankard	3.95	
*Pint Tankard	5.95	
*Milk Jug	6.95	
*Goblet	4.95	
*Coaster <b>*NEW!*</b>	<b>0.65</b>	
<b>*DENOTES SPECIAL COTSWOLD CANALS TRUST ITEM</b>		
Please tick your selections sizes and quantities required. Send the form and remittance to:- <b>Chris Jones, The Courts, 27 Walton Road, Clevedon, Avon, BS21 6AE (Tel.0275 875714)</b> Please make cheques payable to "Cotswold Canals Trust"		TOTAL
		0.65 P & P
NAME.....ADDRESS.....		TOTAL ORDER VALUE
.....		
.....PHONE.....		Win 92

# Canamble '92

---

Walk Leader RICHARD ATTWOOD

Canamble '92 is over and was a great success. On each of the walks between 70 to 90 members and non-members took the opportunity to be guided along the route of the historic Cotswold Canals.

The walks began in June at Saul Junction on the Gloucester - Sharpness Canal in very pleasant walking weather. The Canamblers soon discovered the time taken to get 87 bodies to climb several stiles as they made for the A38 road! At Eastington, they were able to look over the two restored locks and slipway.

July saw a damp start at Brimscombe Port for a 12 mile walk to Cirencester. The walk up through the Golden Valley was as magnificent as ever. Following lunch the long distance was made more interesting by the climb up over the Cotswold Hills following the route taken by towing horses as their masters toiled with their vessels through Sapperton Tunnel along the summit pound of the canal.

A unique opportunity to follow the line of the Cirencester Arm of the canal was taken in August beginning at Whitworth Road in Cirencester which is so named in honour of the engineer who built the canal over two hundred years ago. The Canamblers took it on trust that the obliterated canal once passed this way. However, one of the few remaining sections of towpath passes the Canal Trust Office in Chesterton Lane. The office, it has been discovered, is built right on the line of the vanished canal arm!

The final walk in September started at Cricklade and followed the line of The Thames & Severn Canal across private farmland to Lechlade. This final walk would not have been possible without the permission of the various landowners to whom the Trust is extremely grateful.

But perhaps the greatest excitement of each walk was when the weary Canamblers, foot sore after walking many miles, hobbled to their journeys end to be greeted by a double decker bus. The bus, sponsored by Stroud Valleys Buses, was driven by volunteer drivers from the Company, John Evans and Martin Griffiths, back to the start of each walk.

In 1993 we plan to repeat the Canambles. Details in the next Trow!

Dear Mr Attwood,

I am writing to express my appreciation to yourself and to other members of the Trust for the time and effort put into Canamble '92 which I found extremely interesting, and I enclose a donation as a contribution to your funds.

I will continue to take an interest in the restoration of the Stroudwater, Thames & Severn Canals and may meet you again on a future Canamble.

ROY GOOCH, Dunchurch, Rugby.

## Diary Dates

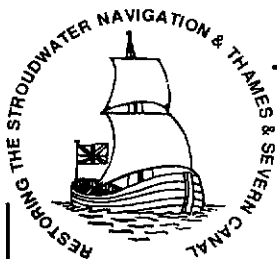
Mon	7 Dec	Western Branch Meeting
Tue	8 Dec	Summit & Thames End Branch Meeting
Sun	13 Dec	Members' Workparty at Chalford - see p 16
Mon	4 Jan	Western Branch Meeting
W/E	9/10 Jan	Members' Work Party at Puck Mill - see p 16
Sun	10 Jan	First Transmission of HTV programme - see p 4
Tue	12 Jan	Summit & Thames End Branch Meeting
W/E	16/17 Jan	DIG DEEP - LONDON WRG - see p 8
Wed	20 Jan	TROW Copy Date
Mon	1 Feb	Western Branch Meeting
Tue	9 Feb	Summit & Thames End Branch Meeting
W/E	13/14 Feb	DIG DEEP - KESCRG - see p 8
Sun	14 Feb	Members' Work Party Return to Siddington - see p 16
W/E	20/21 Feb	DIG DEEP - NWPB - see p 8
Mon	1 Mar	Western Branch Meeting
Tue	9 Mar	Summit & Thames End Branch Meeting
Sun	14 Mar	Members' Work Party at Ebley Infill - see p 16
W/E	20/21 Mar	DIG DEEP - LONDON WRG - see p 8
Sun	21 Mar	Cotswold Canals Challenge - 3rd Annual Biathlon
W/E	27/28 Mar	IWA Clean Up Weekend at Wallbridge, Stroud
Sat	15 May	21st ANNIVERSARY DINNER (details in next TROW)

Western Branch volunteers work most weekends and would welcome your help. Summit & Thames End Branch usually work the last weekend of each month.

If you would like to offer your help, please contact the appropriate person.

Members and friends are welcome at Branch Meetings and Special Events. Western Branch meet at 7.30pm at the Imperial Hotel, Stroud. Summit & Thames End Branch meet at 8.00pm at the "Thames Head" pub, near Cirencester on the Tetbury Road (A433).

<b>IWA &amp; FRIENDS OF THE MUSEUM EVENTS</b>	Meet at 7.30pm at the Museum Schools Room National Waterways Museum (except 12 Jan)
Tue 15 Dec	MODELLING SEVERN TROWS by Peter Wallace who made the model for the Museum
Tue 12 Jan	A VIDEO EVENING A selection of waterways captured from film, TV and video by Graham Ettles at <b>Tewkesbury Marina Yacht Club</b>
Tue 16 Feb	CLYDE PUFFERS An illustrated talk by Hamish Dawson
Fri 5 Mar	CANAL BOAT ART A Talk by Tony Lewery
Fri 12 Mar	AGM GLOUCESTERSHIRE BRANCH IWA.



# Cotswold Canals Trust

**GENERAL  
SECRETARY**

**COMMANDER NICHOLAS WRIGHT**

The Flat Office, CDC Depot,  
Chesterton Lane  
Cirencester, Glos, GL7 1YE  
(Phone: Ciren 0285 643440)

**P/A**

**MAUREEN POULTON**

**MEMBERSHIP**

**FREEPOST (GL65)**

P.O. Box 71. Stroud, Glos., GL6 7BR

**SALES  
MANAGER**

**CHRIS JONES**

The Courts, 27 Walton Road, Clevedon, Avon,  
BS21 6AE (Clevedon 0272 875714)

**TROW  
EDITOR**

**DAVID JOWETT**

11 Upper Leazes, Stroud, Glos., GL5 1LA  
(Stroud 0453 755535)

## SUMMIT & THAMES END BRANCH

**CHAIRMAN**

**JAMES KING**

Moordown, Northfield Road, Tetbury, Glos.  
GL8 8HE (Tetbury 0666 502797)

**SECRETARY**

**PETER CHADWICK**

16 South Street, Swindon, Wilts., SN1 3LA

## WESTERN BRANCH

**CHAIRMAN**

**JOHN FERRIS**

23 Humphreys Close, Lower Randwick, Stroud,  
Glos., GL5 4AZ (Stroud 766072)

**DEPUTY  
CHAIRMAN**

**NICK PARKER**

36 Water Lane, Wotton-Under-Edge, Glos.  
(Dursley 0453 521106)

**EVENTS  
ORGANISER**

**PETE EASTO**

11 Hopton Road, Cam, Dursley, Glos. GL11 5NZ  
(Dursley 0453 545042)

## VOLUNTEER GROUPS

**WESTERN  
BRANCH**

**DOUG BLAKE**

19 Stratton Road, Gloucester.  
(Gloucester. 0452 415843)

**SUMMIT &  
THAMES END**

**ROBIN HALLIDAY**

16 River Park, Marlborough, Wilts., SN8 1NH  
(Marlborough 0672 513400)

