



*Cotswold Canals
Trust*

THE TROW



**THE OFFICIAL MAGAZINE
FOR MEMBERS & FRIENDS
WORKING TO RESTORE
THE COTSWOLD CANALS**

**NUMBER 95
WINTER 1996**

PRICE 50p

Cotswold Canals Trust

CORRESPONDENCE TO: Cotswold Canals Trust, The Flat Office, CDC Depot, Chesterton Lane, Cirencester, Glos., GL7 1YE Phone & Fax 01285 643440

OFFICE ADMINISTRATOR: MAUREEN POULTON

Vice Presidents: Peter Gadsden, John Humphries OBE,
Sir Anthony Kershaw MC, Nicholas Melchior,
Roger Knapman MP, Sir John Knill Bt.

Honorary Civil Engineer
Roger House

The Cotswold Canals Trust is a Registered Charity and its aims are:-

1. To promote, for the benefit of the community, the reopening of the Cotswold Canals (Stroudwater Navigation and Thames & Severn Canal)
2. To manage the restoration of the two waterways to give a balance between the needs of navigation, development, recreation, heritage, landscape conservation, wildlife and natural habitats
3. To promote the use of all the towpath as the Thames & Severn Way long distance footpath
4. To complete the restoration of the Stroudwater Navigation and Thames & Severn Canal from Saul Junction to Thrupp, east of Stroud.
5. To promote the restoration of the Thames & Severn Canal from the River Thames to the Cotswold Water Park
6. The ultimate restoration of the Cotswold Canals as a navigable route from Saul Junction to the River Thames

Registered Office: 1 Rowcroft, Stroud, Glos.

Registered Co: The Stroudwater - Thames & Severn Canal Trust Ltd. Registered in England No. 1207787
Registered Charity No. 269721

TROW

The views and opinions expressed in this magazine do not necessarily represent the views and opinions of the Cotswold Canals Trust

COPY DATE	For publication on or before
20 JANUARY	1st March
20 APRIL	1st June
20 JULY	1st September
20 OCTOBER	1st December

Published by the Cotswold Canals Trust Compilation & Layout by DAVID JOWETT

Printed by ASTRAL PRINTING & STATIONERS (Tel: 01453 752040)
Unit 2, Fromehall Mill, Lodgemoor Lane, Stroud, Glos., GL5 3EH

The Editor welcomes your articles and letters at the address opposite (or please ring)

This magazine takes its name from the historic sailing vessels of the River Severn

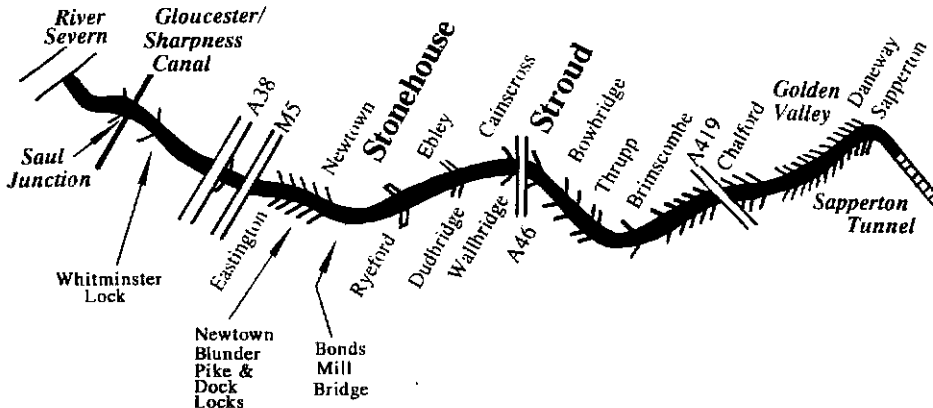
ADVERTISING ● PETER PERRY/MIKE BOURKE 01279 817471 Fax 01279 817485

ENQUIRIES TO ● Global House, 14 Silver Street, Stansted, Essex, CM24 8MD

PLEASE MENTION THE TROW WHEN RESPONDING TO ADVERTS

<< STROUDWATER NAVIGATION * THAMES & SEVERN CANAL >>

THE HISTORIC ROUTE



From the Chairman's Diary

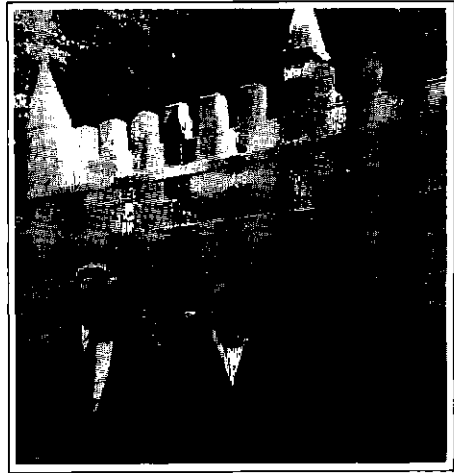
Bruce Hall

DANEWAY PORTAL
Saturday 21st September 1996

The bright sunshine filtered through the trees on to the large crowd. A hush fell as speeches began.

Lord Apsley reminded us of his family's involvement throughout the history of the Thames & Severn Canal. The Lord Bathurst of the day had entertained King George III in 1788 and showed him one of the wonders of the age - the longest canal tunnel ever built and the magnificent portals at either end. Lord Apsley concluded, "...so it gives me great pleasure to unveil this plaque in commemoration of the restoration back to its original form".

Lord and Lady Apsley were presented with a limited edition framed print of the Daneway Portal which also showed the original lengthsmen's cottage.



Maureen Poulton

Bruce Hall, Lady & Lord Apsley

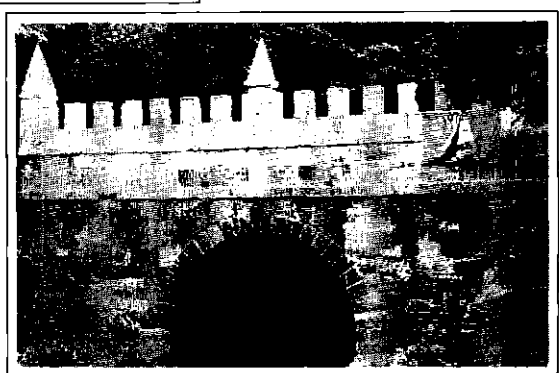
In my introductory speech I thanked all those donors who made this restoration possible, both individuals, Charitable Trusts, Local Authority and Government Agencies. An invitation was also given to take part in a conducted tour of the nearby Golden Valley Locks to see the work achieved by the B.T.C.V., funded by the Civic Trust during the past three years.

A truly wonderful afternoon.



Maureen Poulton

Daneway Portal
Before and After



Maureen Poulton



LATTON FIGHTING FUND

Friday 11 October 1996

Banner headlines in local press.

Tim Coghlan of Braunston Marina kindly travelled down from the Midlands to present a cheque to the Trust for £500. We are most grateful for this donation which was made from profits from the excellent annual Braunston Boat Show.

A group of us, including the local M.P. Geoffrey Clifton Brown, managed a backdrop of heavy plant to the photographs of the large presentation cheque.

More exciting news about the ongoing Latton saga appears on page 6.

See Front Cover Photograph
Left to Right
Tim Coghlan, Bruce Hall,
Geoffrey Clifton Brown

Daneway Portal Stonemason, Piers Denny



MUSICAL BOXES

Free Estimates given

Keith Harding

*World of Mechanical Music,
Northleach, Nr. Cheltenham, Glos., GL54 3EU
Tel: 01451 860181 Fax: 01451 861133*

**LARGE SELECTION OF
MUSICAL BOXES FOR SALE**

Museum and shop open 7 days, 10 - 6

WHITMINSTER

Tuesday 22 October 1996

Installation of mitre upper gates. They are in and looking good. Final adjustments to be made when the stop planks are removed and the cut into the river is made. These gates have been most generously donated by a single grant from a Charitable Trust.

Thank you to all those who have sent donations to the appeal fund. The total at present stands at over £2,000.

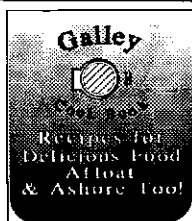
If that coffee morning hasn't happened yet - not to worry - the fund is still open and donations are still arriving. I am always willing to do an illustrated talk for a suitable donation.

A Charitable Trust has kindly donated £25,000 towards this work which has allowed the order for the guillotine gate to be placed. Installation is expected in the New Year.

Opposite Page:

One gate in and the other well on the way

Galley Cook Book



**ONLY
£2.45
incl. post**

Invitations were issued two years ago by Maureen Poulton to submit your recipes for publication in a Fund Raising booklet.

At last the project has come to fruition in the new "GALLEY COOK BOOK". You can obtain a copy of this publication from the Sales Manager - see page 20.

Sponsorship was obtained from Portable Kitchens which means we shall soon be in profit and raising funds to further restoration of the Cotswold Canals!

Do Your Trees need Expert Attention?

"TREE MAINTENANCE"

prop **GEOFFREY MARCH NCHarb**

- *TREE SURGERY *INSPECTIONS & REPORTS
- *DEBRIS CHIPPED - CAN BE LEFT FOR MULCH
- *DANGEROUS TREES MADE SAFE
- *STUMP REMOVAL BY GRINDING
- *PRUNING & HEDGES
- *SUPPLIERS OF MULCH *FULLY INSURED
- *FREE ESTIMATES *50-MILE RADIUS
- *ESTABLISHED 14 YEARS

STROUD (01453) 731212

Fax (01453) 731569



Unit 12, Hope Mills, Brimscombe, Stroud

ASTRA

PRINTING & STATIONERS

Business Personal & Wedding
Stationery

From Business Cards to
Brochures & Books

**A FRIENDLY AND
RELIABLE SERVICE**

Free Local Delivery/Competitive Rates

Call or Fax Us Today On -

01453 752040

Unit 2 Fromehall Mill Lodgemore Lane Stroud Glos

Thanks to . . .

. . . Our Donors

Charlotte Bonham-Carter Trust
Oldham Foundation
Pennycress Trust
Stroud District Council
D'Oly Carte Charitable Trust
Whitbread plc
Manifold Trust
North Wilts District Council
Walter Guinness Charitable Trust
The Princess Anne's Charities
Roger & Sarah Bancroft Clark Charitable Trust
English Heritage
Clothiers Arms, Stroud
Braunston Marina Ltd.
Summerfield Trust
RMC Group plc
Whitminster Lock Anonymous Donation

. . . Our Advertisers

Astral Printing & Stationers
Cooper Drainage Supplies
ELMREP Copiers & Fax
D S Fforde Marine Surveyor
Gibson Boat Services
Gardeners Tree Surgeons
Keith Harding World of Mechanical Music
Geoffrey March Tree Maintenance
John Oliver
Pete Cremin Builders Limited
Redmayne Bentley Stockbrokers
Ruskin Mill
Alan Stone Associates
Tiles of Corinium
Whitminster Hotel

Congratulations !

Congratulations to Colin & Denise Stride who are proud parents to a new baby boy born on Saturday 26th October.



Olive Bailey

The Cotswold Canals - The Next Stages

by Councillor Bruce Adams

Gloucestershire County Council

Chairman

Cotswold Canals Steering Group

A NEW STEERING GROUP

Following the very encouraging Corridor Study by British Waterways, the Steering Group of which I Chaired, it was decided by the various bodies and committees involved with the Cotswold Canals that the time had come to amalgamate the committees into one. Its primary role would be to develop and pursue initiatives to achieve funding for the restoration of the Cotswold Canals but it would also recommend management arrangements commensurate with the funding achieved.

The membership of this Steering Group comprises the appropriate District Councils, the Cotswold Canals Trust, the Proprietors of the Stroudwater Navigation, the Environment Agency and British Waterways.

LOTTERY BIDS

The Steering Group has started work and the first main task, identified in a report by Cdr Nicolas Wright, will be to finalise a bid to the Heritage Lottery Fund for a first key tranche of funding for Project Management. This will manage - inter alia - the preparation of subsequent bids and also the Assessment Studies on the environment, water resources, and Sapperton Tunnel, the need for these having been established by the Corridor Study.

This bid is being prepared by Gloucestershire County Council who plan to submit it in December.

£ 250,000 FOR LATTON WORKS

Meanwhile, mindful of the importance of maintaining the route of the Canal at Latton, Gloucestershire County Council has generously made £250,000 available towards providing a culvert under the new A 417 bypass.

Councils are far too often criticised for being short term in their outlook.

This is an imaginative investment in the future that is to be welcomed. Both Cotswold and North Wiltshire District Councils seem likely to give support to the County Council which is now pursuing the matter with the contractor and the various government agencies.

We also have the active support of Geoffrey Clifton-Brown, M.P. for Cotswolds. It remains to be seen if we can achieve the balance of funds needed and find our way through the bureaucratic "treacle pudding" to get the culvert installed under the main carriageways before the tarmac goes on next spring; at the time of writing it is proving difficult enough to get a revised estimate for this work.

THE FUTURE

I do believe that the Corridor Study was a huge leap forward in the restoration process which has been driven for so long by the enthusiasm of the Cotswold Canals Trust.

The Study has drawn the threads together and there is now a great deal of consensus within and between the local authorities on the importance of the restored canals to the community and the local economies.

Of course, all the authorities realise that there is much work still to be done and that it will take a good few years to achieve full restoration.

Nevertheless, it can be said that a new impetus has been given to the project and, to achieve success, it is vital that this impetus is maintained by the continuing enthusiasm and work of all who believe in restoring the splendid engineering heritage left to us by our pioneering forbears.

SDC Bids For Funds

Report by Bruce Hall

BID No. 1: Stroud District Council has just submitted a bid to English Partnerships for funding to complete restoration of Ryeford Double Lock and to dig out 300 metres of 1960's infill. This is just short of Oil Mills Bridge.

BID No. 2: Another bid - another fund! A Capital Challenge Fund bid has also been launched by the Council for Wallbridge in Stroud. Included in this scheme is a navigable culvert under the A46, including towpath and work on the whole section from the end of the Stroudwater Navigation to the top lock.

A road calming scheme for the notorious series of roundabouts also features. The Cotswold Canals Trust's proposals for the Wharf area are included in the scheme which includes full dredging.

Road Scheme 2B

Report by Bruce Hall

Watch out this winter for removal of a major obstacle on the Stroudwater Navigation at Stonehouse.

Preliminary clearance work has already taken place at the site of the missing link on the A419 between the Ebley Bypass and the M5 at Eastington.

Part of this work will include a new bridge over the Stroudwater which replaces small culverts. The bridge is just off the A419 behind the "Ship" public house which is due for demolition.

Unfortunately work does not include a new bridge to replace an old fixed swing bridge (Upper Mills) but by comparison that is a relatively easy job later on.

RUSKIN MILL

Centre for cultural development, design and craft workshops, training and study

RUSKIN MILL COFFEE SHOP

Serving Vegetarian Lunches, Teas & Coffee. Open Tuesday to Saturday 11am - 4pm

Sundays and Bank Holidays 3pm - 6pm

Fresh organic vegetables available Wednesday and Thursday 9am - 5pm

GALLERY OPEN

Regular Exhibitions of Arts and Crafts and the Environment open everyday 11am - 4pm

GUIDED TOURS

Guided Tours and Demonstrations on the history of Ruskin Mill and the waterwheel by appointment with Aonghus Gordon. Tel: 01453 832571

CRAFT ACTIVITIES CURRENTLY AT RUSKIN MILL INCLUDE:

Jeweller	Rag Rug Maker	Landscape Artist	Stone Carver
Blacksmith	Cabinet Maker		Flowform Design Limited
Photographer	Leather Worker	Ebb & Flow	Stained Glass Worker
Architect	Violin Maker	Flowform Installations	Basketmaker

Most craftspeople require prior appointments for visitors to workshops

Ruskin Mill is inspired by the work of Rudolph Steiner, William Morris and John Ruskin

Ruskin Mill, Millbottom, Nailsworth, Glos., GL6 0LA. Tel:01453 832571

Maintenance Update

Report by Des Pinnock

Here is a summary of completed jobs from the last quarter.

RYEFORD SWING BRIDGE

Painting completed, brickwork and bearing greasing arrangement re-instated.

SAPPERTON TUNNEL/DANEWAY PORTAL

Several visits to clear undergrowth from towpath and canal bed in preparation for the Official Opening on 21st September.

BLUNDER & NEWTOWN LOCKS

Tug 'Goliath' used as a working platform to trim overhanging tree branches and to clean off growth on lock lower gates and wing walls.

BONDS MILL

Bridge handrails, mesh guards, other railings and towpath gate re-painted.

NEWTOWN LOCK TOP GATE WALKWAY

Support metalwork being manufactured, walkway boards prepared ready to fix.

FOUR WHEEL TRAILER

Stripped, ready for re-furbishing (suspension units over stressed during Dig '95).

Finally, a welcome to a new weekday helper, Alan Fennel, whose first job was to strim all along the wooden rail boundary fence at the Eastington Compound. Thanks Alan, it has long needed attention!

Are there any new helpers out there? Our Monday and Wednesday team is presently made up of Peter James, Derek Bay, Ron & Peggy Stephens, Sue Cain, Des Pinnock and now Alan Fennel. On Sunday mornings, Richard Attwood and helpers concentrate mainly on 'jungle bashing' and altogether the work, in terms of variety and quantity, is virtually limitless. Why not ring now - Richard Attwood on 01453 885057 or Des Pinnock on 01452 856233

Another fine job completed at Ryeford pedestrian swing bridge



Des Pinnock

Read All About It

Publicity Officer Barney Bruce

September and October certainly saw us in the News!

First it was the launch of the Whitminster Lock Appeal which received good coverage in the Gloucester Citizen and this was followed a week later by a full page article in the same newspaper entitled "Breathing new life into Stroud". This covered the proposed regeneration of the town, including a separate section on canal restoration, and stated that "at the centre of the ambitious project is the reopening of the Stroudwater Canal at Wallbridge to turn the derelict area into a major gateway for the town".

The unveiling of the restored Daneway Portal gave us a real opportunity to publicise the Trust. The Daily Telegraph did a quarter page feature on the Monday before and HTV West gave us an excellent 60 second slot two days later. The unveiling was very well publicised as it was covered by all the local newspapers (with at least two photographs each) and also a 30 second slot on Central TV's "Midlands Today".

"Cotswold Life" magazine has completed a two page colour feature on the Trust which should be published in the November edition.

I was just relaxing and thinking about an in-depth article on what we have achieved this year when all hell seemed to break loose on Friday 4th October with the announcement of the £250,000 grant by Gloucestershire County Council towards the cost of the culvert under the Latton Bypass.

There was excellent coverage in all the local dailys but the leader in the Gloucestershire Echo was very critical of the Council for supporting a "drain in Wiltshire" when funds had been cut in education, social services and care in the community. It asked readers to write in to the paper, or the Chief Executive of the County Council, and state their opinion about the Council's decision.

Needless to say I monitored the reactions very carefully and was overwhelmed by the letters of support which far outweighed the critical ones by nearly ten to one. A big Thank You to everyone who put pen to paper (even if your letter was not published) - it certainly gave us some marvellous publicity. Hopefully, your letters of support were copied to your local Councillor.

The highlight of the month for me was an article in support of the canal by Environmentalist Jonathan Porritt, former Director of Friends of the Earth, and it seems appropriate to close with his final paragraph:

"To keep their [the Trust's] vision alive is worth every penny of the £ 250,000. The people we should be kicking hell out of are not the Gloucestershire County Councillors but those who refused to help with the works at Latton - the skinflints on Wiltshire County Council and the bone-headed, car-worshipping bureaucrats at the Department of Transport who wouldn't recognise a vision if it materialised in front of them on the Road to Damascus!"

FAST EFFICIENT SUPPLY SERVICE FROM STOCK

Coiled Drainage Pipes & Fittings

Sewer Pipes

MPDE Water Pipe & Fittings

Cable Ducting

Twin-Wall Pipes

Pressure Pipe

LARGE STOCKS HELD

$\frac{1}{2}$ " to 24" diameter

COOPER

DRAINAGE SUPPLIES

TEL: (01452) 740555

HEAD OFFICE: ONE SPENCER ROAD, WHITMINSTER, GLOS. GL12 6TD

Club 100 News

Winners of the 4th, and final, draw for 1996:

First	£74	Mrs A R Wilson
Second	£37	Mr A J Bruce
Third	£14	Mr R A Spears

Prizes were scaled down from £100/50/20 to match the 74 subscriptions. The 1996 cycle is complete so those reaching the anniversary of joining will receive a separate request to renew. May I ask any other Trust members not yet subscribing to consider joining if you would like to increase your level of support to the Trust. Copies of the form are acceptable - full leaflet from Des Pinnock 01452 856233.

Wildmoorway Work

Report by Neil Ritchie

Following the success of July's work camps, NWPNG led the August Dig Deep camp at Wildmoorway Lower Lock where yet more bricklaying took place and the last of the coping stones was replaced on the main offside wall. See page 17 for their own report.

KEESCRG visited for a weekend in September and completed the concrete backfilling and landscaping works on the offside and set the lines for the rising line of coping stones leading from the towpath under the bridge up to the end of the main nearside wall.

A joint weekend by WRG NW and Essex WRG on 12-13 October saw what we hope is the last of the demolition work carried out when the dodgy brickwork on the offside (between the bridge and bottom gate recess) was hacked back for up to thirty inches and left ready for the next bricklaying team to move straight in. A considerable quantity of intricate bricklaying was accomplished on the nearside, in no small part due to Roger Kenworthy, and we are now ready to set the coping stones on the rising wall and quite a bit of the section passing under the bridge.

Just as we go to print, we will be in the middle of another one week camp (starts 19 Oct) when we hope to complete all visible brickwork and return the site to some sort of sanity before a press day to celebrate the mammoth quantity of work that volunteers have done, with considerable input from WRG and the visiting teams from Dig Deep.

CLUB 100 MEMBERSHIP APPLICATION FORM

To: The Membership Secretary, Des Pinnock
7 Vicarage Close, Churchdown, Gloucester, GL3 2NE.

I apply for membership of the Cotswold Canals Trust
'Club 100' I have read and agree to abide by the rules.

Signed..... Date.....

Name.....

Address.....

If acknowledgement is required, please tick box/enclose S.A.E.

SUBSCRIPTION £15 p.a. (one chance in each of four draws)
No. of subscriptions.....at £15 each)

I enclose a cheque for £..... OR I have completed the
(payable to Cotswold Canals Trust) Banker's Order below

BANKER'S ORDER To: Name & Address of Your Bank..

Please pay Barclays Bank, Southgate Street, Gloucester
for account COTSWOLD CANALS TRUST
Sort Code 20-33-83 Account No. 10843628

the sum of £..... on 1st January 1997 and on the same day
every year until further notice

Signed..... Name.....

Address.....

A/C No.....

To Bank: Please quote this reference on payments:

ALAN STONE ASSOCIATES
CONSULTING ENGINEERS

WE OFFER ADVICE IN THE FOLLOWING FIELDS:-

Calculations & Structural Drawings for Building Regulations

Structural Surveys Building Refurbishments

Expert Witness Foundation Problems

Highway Access Highway Design

SHELLEY HOUSE, 27 BATH ROAD, SWINDON, WILTS, SN1 4AS

Tel: 01793 610563 Fax: 01793 514554

A Skid Steer Loader

Report by Neil Ritchie

We had recently been examining every alternative to see how we could move equipment and materials from the main access point at Wildmoorway Lower Lock up to future work site Humpback Lock (between Boxwell Spring & Wildmoorway Lower Locks). With an SSSI on one side and ploughed fields on the other it was decided that, short of hiring a helicopter, we would have to find some way of using the towpath. A dumper is too wide, powered (or unpowered) wheelbarrows are too small but WRG own a skid steer loader which might be just the right size. A few phone calls and letters passed backwards and forwards and eventually I received a phone call to say the machine will be with you tomorrow!

Much flurry of activity, particularly when we realised that we had no authorised drivers at the Thames End. No problem. John Palmer,

who delivered the equipment on the back of a tilt-bed car transporter, also has Instructor status for this bit of kit. Roger Kenworthy and myself were given a baptism by fire when we realised that we had to move 12 pallets of bricks from near the road up to the main work site. A full pallet of bricks, when lifted from on top of another one, puts the centre of gravity too far forward. Even the weight of two six foot men stood on the back couldn't equalise the effect. Nothing for it but to start unloading bricks by hand until we had all four wheels sitting on the ground again.

The instruction session was first class and we discovered the limits of the loader's capabilities. We had equal fun locking it up at the end of the day in one of the containers where room was made by shuffling surplus kit around. The ramp up to the container is a bit worrying because I understand these loaders can tip backwards if care is not taken. After the first run, it was then only a question of gently inching forward so that the front loading bucket didn't crush the dumper parked in front of it. It fitted! It matters not that we only had less than 6mm to spare; it still fitted. All we have to do now is see how far up the towpath we can get with it.



**REDMAYNE
BENTLEY**
STOCKBROKERS



"YOUR FRIEND ON THE STOCK EXCHANGE"

GREAT REASONS WHY YOU NEED US!

LOW COMMISSION CHARGES

Minimum of £17.50 and INSTANT DEALING
FREE ADVICE available. Subject to the usual
CLIENT AGREEMENT LETTER

FREESTYLE LOW-COST PEP SCHEME

giving you the right to choose what you buy or sell

FREE VALUATIONS and FREE REVIEWS
of new and existing Portfolios

**SPECIAL HELP WITH SELECTING
GOVERNMENT STOCKS AND
BUILDING SOCIETY SHARES (PIBS)**

ESTABLISHED in LEEDS in 1875 - now with 14 offices
REGULATED BY THE SECURITIES AND FUTURES AUTHORITY
MEMBERS OF THE LONDON STOCK EXCHANGE
23 HIGH STREET, STROUD, GLOS. GL5 1AJ

Tel: 01453 758100

Telephone or write to us for further details
of these and other services

D. S. FFORDE
Marine Surveyor

Tel/Fax: 01453 752598. Mobile 0973 835120

*Does your boat need a
Survey or Safety Certificate?*

*Call Des Fforde
Your Local Independent
Marine Surveyor on*

01453 752598

*for a prompt
professional service.*

*Over 30 years experience
Canal Trust Member for 15 years*

Winter Work Parties

Leader Richard Attwood

All work parties start at 9:30am onwards and finish about 1:30pm or when the volunteers are totally exhausted. Arrive and leave at your convenience. Bring wellies or old shoes, gardening gloves and refreshments. If you have a favourite bow-saw bring it along. All volunteers must be aged 16 or over.

30th December. Newtown offside.

Meet at Newtown Lock to clear scrub from the offside bank of the canal.

12th January Hoffmans tipping site.

Park at Bonds Mill and walk along the towpath towards the railway crossing. Just after the gate by Hoffmans Dam is the old canal dredgings tipping site. The task is to clear the scrub from the level section to, eventually, create a grassy area with views across the Frome valley.

9th February. Hoffmans tipping site again.

2 March. Wallbridge.

Park on the triangle of land opposite the Bell Hotel for a general tidy up.

16th March. Ebley infill again.

Park in the Ebley Mill visitors car park. This is a return visit to spring clean the, hopefully flail-mown, linear bramble patch between Greenways printers and Bridge Road.

New Years Day Walk

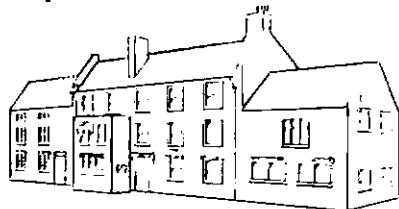
with Richard Attwood

Meet at the Saul Junction public carpark at 10:30 for a bracing walk along the G&S to Parkend bridge, returning past Morton Valence church to Whitminster to join the Stroudwater at Stonepits bridge. We will stop at Whitminster Lock to inspect progress. There will be the usual charge of £2 per adult and the walk should finish by 1:30pm.

Phone 01453 885057 for further details.

THE WHITMINSTER HOTEL

Proprietors: Ken and Jackie Mander



RESTAURANT PUBLIC BAR
FUNCTION ROOM AVAILABLE
WEDDINGS & PRIVATE PARTIES
CHRISTMAS PARTY NIGHTS, MEALS, ETC.
EN SUITE BEDROOMS
CONTRACTORS WELCOME

Whitminster, Gloucestershire, GL2 7NY
Tel: 01452 740234 Fax: 01452 741403



BOAT SAFETY SCHEME

EXAMINATIONS &
CERTIFICATES

by

JOHN OLIVER

BSS Authorised Examiner No. 192

The Toll House, Mythe Bridge,
TEWKESBURY, Glos.

01684 292760

Concessionary Charges for
Cotswold Canals Trust Members

"Your Local Boat Examiner"

Letters to the Editor

I was very interested to read the letter from Charles Lyne of Fairford in the latest issue of the Trow and the several very important questions he asks. I particularly like the view of his about ventilation in Sapperton Tunnel because Netherton which is wider than Sapperton although around the same length was becoming quite heavily polluted in the days before and after the National Waterways Festival at Windmill End in August. I have not counted but Netherton must have at least five vent shafts. Our passage through after the event with only a nose as indication found heavy diesel fumes and a blue haze was venting very freely out of the Northern portal. What I would like to pose for readers is the whole logistics of operating Sapperton on a reopened waterway and await some serious thought.

Let me paint the scene, a lovely sunny July day, three boats an hour coming up from Daneway and another one or two an hour coming from Coates. Allow a one hour trip to pass through the tunnel.

Do you have a one hour about with a one hour gap to allow for late comers? Do you have an electronic token system where first come gets the next free slot? What about the Whallies that go out of turn and meet an oncoming craft a mile inside? Do you widen the tunnel to 14ft lin and let all narrow craft proceed freely and control only the wider craft? Do you build vent shafts or use electric traction like Dudley?

Answers on a postcard.....

MIKE AYLAND, Priding, Gloucester.

PETE CREMIN BUILDERS LTD.

Best Wishes to the Cotswold Canals Trust
HOUSES BUILT TO INDIVIDUAL REQUIREMENTS
NATURAL STONE A SPECIALITY
ALTERATIONS, RESTORATIONS, MODERNISATIONS
of PERIOD & TRADITIONAL HOMES

35 HIGH STREET
CRICKLADE
TEL: 01793 750039

Dudley Award

During the August Bank Holiday, the Trust set up its "Roadshow" marquee at the Inland Waterways Association (IWA) National Waterways Festival at Dudley manned by the usual team of dedicated volunteers. Conditions were difficult due to frequent heavy downpours. The site recovered quite well in between the showers until a final blow was dealt on Monday afternoon just in time to make packing-up a nightmare.

Despite all this, our team agreed that the show had one of the best atmospheres for years, takings were decent despite small crowds, and interest in our project was greater than ever. Sympathy was expressed for our plight over the Latton situation and there was a steady stream of new members.

We were delighted to receive an award at a ceremony on Monday morning. David Jowett received the award from George Andrews, IWA West Midlands Region President (see below). This was awarded by the British Marine Industries Federation for the best presentation by a non profit waterways related organisation. Thanks to them for the award and to the IWA for organising the annual show and providing us the opportunity to sell our project to the public.

The sales stand is manned by an enthusiastic team from the Trust and it is this team that should take the credit for the award. In looking for an individual to credit for the image we project, then we must thank Chris Jones for his vision and excellent organisational skills in assembling the outfit you see today.



Waterway Images / Harry Arnold

Items For Sale

Over the years a whole host of bits and pieces have accumulated in the plant compound at Eastington. Phone Richard Attwood if you want to buy any of these valuable and useful items. Phone 01453 885057

Hand mortising machine - £15 (2 for sale)

Stone cutting bench (Dismantled, no motor) £50

Lock winding gear parts

£2 per cog £10 per complete kit

Ferguson hydraulic front bucket - £250

Ferguson rear mounting scraper - £20

Scissors action bale grab - £20

Large scissors action grab - £30

Millpond winding gear + paddle - £100

Concrete tipping skip - £25

Priestman clamshell bucket - £125

Iron knees for wooden narrow boat

set of 17 - £200

Large mud bucket - £75

3" reciprocating pump with Petter engine £75

Coventry Climax fire pump (no carb) £200

Coventry Climax fire pump (complete) £250

Volunteers - Worth A Million !

Recently, some figures were worked out to put a monetary value on the work carried out by volunteers over the last 24 years. A very conservative policy was adopted counting only work carried out on the canal itself (ie. not sales events, meetings, etc.).

Using the daily worth of £45 per man day (the acknowledged sum when calculating for matching funding), the resulting figure was just short of one million pounds!

Best Wishes to the Cotswold Canals Trust from **GARDINERS TREE SURGEONS**



APPROVED CONTRACTOR

All aspects of Tree Surgery
Local Authority Approved Contractors
Surveys & Reports
Tree Planting, Woodchipper Hire
Stump Grinding, Fully Insured
Woodchip Sales, Pasture Mowing
Set-aside Topping

29 NORTH CERNEY, CIRENCESTER, GLOS, GL7 7BZ.

TELEPHONE: CIRENCESTER (01285) 831566

MOBILES: 0836 322552 0831 152024

Surfing the Inland Waterways

with Richard Attwood

Here are a few web sites to take netties surfing along the inland waterways and through the hyperlinks to who knows where.

The Virtual Waterways Network
<http://www.blacksheep.org/canals/vwn.htm>

British Waterways Home Page
<http://www.rscm.com/boat/>

Unofficial BW System Pages
<http://www.british-waterways.com/>

The IWA Home Page
<http://www.man.ac.uk/CME/IWA/iwahome.htm>

WRG Home Page
<http://www.man.ac.uk/CME/WRG/wrghome.htm>

The WRG pages are particularly good but for more general Cotswold interest visit the Cotswold Hyperpages at
<http://www.digitalbrilliance.com/hyperg/>

From these pages you can hyperlink to Joe's Chippy in Stroud!

The credit for the next item goes to "Navvies" no. 159 and can be accessed by normal email as well as the internet. To receive email on canal related topics send an email message to "canals-request@blacksheep.org" (without the quotes) and the single word message "subscribe" (without the quotes). Messages will start to arrive. You will also be told how to unsubscribe. The same messages appear in the newsgroup uk.rec.waterways for those who prefer newsgroups.

Cotswold Canals Charity Walk

On the 6th April there will be another opportunity for members to walk a few miles and raise funds for the Whitminster Lock appeal. The walk will start from the public carpark at Saul Junction and will, of course, visit Whitminster Lock. Full details and sponsorship form will be in next Trow.

New Members Record

Membership Secretary Des Pinnock

This quarter we are pleased to welcome a record number of new members:-

Ms A.J. Buffoni, Cirencester, Glos
Mr D.G. Miles, Saul, Gloucester
Mr R.L.C. Crocker, Rodborough, Stroud
Mr P.G. Green, Stonehouse, Glos
Mr M. Mason, Cirencester, Glos
Mr M.J. Storton, Hardwicke, Gloucester
Mr M.J. Cowell, Stonehouse, Glos
Mr R.J. Embeary, Siddington, Cirencester
Mr C. Spencer, Honeywell, Barnsley, S. Yorks
Mr I. Concannon, BFPO 354
N.V.T.E.C Sodbury Vale, Thornbury, S.Glos
Mr & Mrs A.M. Dedman, Upper Cam, Glos
Mr D.A. Hunt, Irthlingborough, Northants
Mr S.J. Kellett, Blunsdon Ridge, Swindon
Mr P.K. Hamblett, Bewdley, Worcs
Mr & Mrs M.H. Marsden, Rangeworthy, Bristol
Mr D.H. Parrott, Chalford Hill, Stroud, Glos
Mr R. Andrews, Highworth, Swindon, Wilts
Mr J.F. Hunden, Staple Hill, Bristol
Mr P.J. Hale, West Midlands
Mr S.F. Kelleher, Exeter
Mr & Mrs G. Page, London
Mr & Mrs J.R. Ralphs, Kenilworth, Warks
Mr G.A. Allen, Wotton under Edge, Glos
Mr J.A.W Bridge, Minsterley, Shrewsbury
Mr F.J. Blundred, Fellside Park, Whickham,
Newcastle-upon-Tyne

Total Membership is now 1542

This must be with special thanks to all Trust volunteers who have staffed the Sales stalls, helped in organisation of the many events this past Summer, crewed the Trip Boat, been engaged upon Restoration or Maintenance or who have just walked and talked to people - it is only through their efforts that so many have been introduced to the Trust and then be sufficiently impressed to join to support our Aims.

May I also make a plea for more members to take out Deeds of Covenant. If you pay Income Tax, it enables the Trust, a Registered Charity, to reclaim the Tax you would already have paid on your subscription. Just give me a call (Des Pinnock, 01452 - 856233) for a form to be sent.

Mr M.K. Macpherson, Inverurie, Aberdeen
Mr & Mrs S. Humphrey, Stonehouse, Glos
Mr & Mrs A.J. Ellett, Martock, Somerset
Ms T.V. Silvey, Gloucester,
M. Arnold & L. Tuck, Dursley, Glos
Mr R.L. Price, Stroud, Glos
Mr D. Eames, Stroud, Glos
R & J. Lacy, Sharpness, Glos
Mr P.A. Stanworth, Cheltenham, Glos
Mr R.E. May, Dursley, Glos
Miss A.M.C. Goddard, Whiteshill, Stroud
Mr P.I. Barr, Chalford, Stroud, Glos
Mr S.J. O'Dare, Abbeymead, Gloucester
Mr J.W. Telling, Westcliff-on-Sea, Essex
Mr J. Harris, Cameron Park, California USA
Mr G. Breeze, Cheltenham, Glos
Mr R.C. Cook, Downend, Bristol
Mr P. Lawrence, Tetbury, Glos

ELMREP

COPIERS & FAX



ELMREP LIMITED, Elmrep House,
Eastern Avenue, GLOUCESTER,
GL4 9BR 01452 300959 Fax 300988

To advertise in

TROW

please contact
Peter Perry or Mike Bourke at

New
Address 14 Silver Street
STANSTED, Essex
CM24 8MD

PHONE: 01279 817471

Fax: 01274 817485

Sales in the Park

Neil Ritchie reports on the recent Cotswold Country Fair in Cirencester Park



The small sales stand was organised, the volunteer staff were on standby, the stock had all been checked and put into the containers ready for transporting, the cash float was set aside; in fact, just about everything had been thought about and planned for - except the weather.

In between the solid downpours of rain came the regular showers and when either of these failed to perform we had sudden gusts of wind to catch us off guard.

The showground was well organised with something happening in the main arena or nearby from the time the gates opened at 8.30am until at least 5.00pm. The quality of the stands was excellent with a wide range of goods on sale, from wellies and waterproofs (essential!) to food and rural crafts. Our colourful stand showed up well against the dismal backdrop of rain clouds and the overhang at the front made a welcome shelter for many of the folks passing by.

So how did we fare? Saturday saw a grand total of £7.50 and Sunday taking about three times this amount. In terms of takings, probably the worst show we have ever attended, but in terms of useful contacts, one of the best.



How do we measure success? I would suggest that in the context of this sort of event, raising public awareness and signing up new members is more important than raising fifty or sixty pounds. I think some of the conversations that we had will still be reaping benefits for the Trust for many years to come. Many thanks to Pat Kettle, Robin Halliday, Catherine Constable and Mark Welton for enduring the wind and the wet.

Summer Boat Trips

Co-ordinator Shirley Easto

Another summer season of boat trips at Eastington was concluded at the end of September. The trips had been running every weekend since early May with only four Sundays totally washed out by bad weather. Highlight of the season was the second "Stroudwater Canal Day" at Blunder Lock on 15th September when the area was busy all day. The trip boat was kept fully occupied being backed up at all times by tug "Goliath" making welcome trips to keep queues to a minimum.

I must thank Des Pinnock for all his help. His maintenance of "Phoenix" included fitting a new propeller at short notice (following an incident with a barley straw bale on an evening trip!). His team's maintenance of the lock together with John & Barbara Wise's efforts on the flower beds and grassed areas provided very pleasant surroundings.

Many thanks to the small band of helpers who have given up their Sunday afternoons to steer, crew and play at lock-keepers throughout the summer. I hope you all enjoyed it enough to want to be press-ganged again next year. Anyone else who would like to "have a go" next year, please get in touch on 01453 545042. To all those who helped this year, thank you and well done in raising £1,217

Tunnel Boat Trips

An invitation from Robin Payne

The tunnel trip season will be starting soon now that winter is coming. A meeting will be held at the Tunnel House public house at Coates (near the tunnel mouth) on Sunday 8th December starting at 12 o'clock. This will be a friendly get together to discuss the trips and start a rota.

If you are interested in joining the team you will be most welcome. Full training is available if you wish. Please come along - if you can't join us on that date then please contact me on 01453 890256.

Diary of a Work Camp

Kept by Alan Cavender

There have been several week long camps this year at Wildmoorway Lower Lock. Here is the diary to one of them.

Saturday: Accommodation in Rugby changing rooms, lunch in pub to plan the week, volunteers arrived, mainly from the Midlands. PM - quiz, retired to the pub to review the day. (This was a good idea so we did it every day).

Sunday: Work on site - coping stones, brickwork, scaffolding, pointing, trying to fix the dam, clearing the side pond. Barry the chef arrived - from Midlands. PM - trip on electric boat (Yorkies had girlie chat on towpath). Neil Ritchie's dog is mental!

Monday: Ear plugs are the recipe for a good night's sleep. More work on site. Daniel

jumped(?) off the dam, my new boots big success. PM - swimming.

Tuesday: More work on site, side pond coming along nicely, ran out of decent coping stones. PM - Skittles in the pub, Nicholas (from Geneva) won.

Wednesday: Lots of work on site, probably because I wasn't there. PM - swimming. Discovered Derek is a Gershwin fan too.

Thursday: Bill happy with ear plugs and work boots too. Good team work, more done than '95 as weather cooler. Peter happily driving Kubota. PM - Goff's Brewery. Bitter confirmed as superior to lager.

Friday: Coping sort of done, backfilling started. Brickwork looks good, side pond a work of art. Dam abandoned. PM - BBQ on site.

2nd Saturday: Cleared up hall, drove home, fell asleep.

2nd Sunday: Missing Barry's cooking, sorted out finances (Adrian will be happy).

BOAT SURVEYS

If you require a Boat Survey
for Purchase, Insurance or
Certification
try

GIBSON'S BOAT SERVICES

Surveys done promptly
and sympathetically

01672 851232



We Offer one of the Finest Selections
Exclusive Designs Made to Order
Cork and Vinyl Floor Covering

Trade Enquiries Welcome
Open six days a week

*Best Wishes to
Cotswold Canals Trust*

10 Black Jack Street
Cirencester

Tel: 01285 653623



Dudley Tunnel Trip

Report by Robin Halliday

A good turnout of Trust members met at Eastington compound on Saturday 7th September. Before boarding the fully-booked coach, cars were parked in the compound and the party set off for the Midlands via the M5. Thanks to the expert navigating by David Jowett (M.C. for the day in the forced absence of Pete & Shirley Easto) we arrived at the H.Q. of the Dudley Canal Trust at Parkhead Locks. Inside the old pumphouse we were given welcoming cups of tea and coffee by members of the Trust followed by a fascinating talk with slides by Alan Garnell and Vic Smallshire.

We were told that the first rally of boats at Parkhead, when the area was derelict, was held in 1962, followed closely by another oversubscribed trip in 1963. It seems that from there they have never looked back thanks to the hard work of Trust members and the financial and moral support of Dudley Metropolitan District Council. The history of the rescue and restoration of the tunnels included a "Big Dig" in 1970 and an official

opening in 1973. Since then a series of repairs and extensions have added to the tunnel complex.

The history of the tunnel, which was built as part of the Dudley No. 1 Canal, is linked directly to local industry - coal, ironstone and limestone all occurring naturally in the immediate area. As a result vast areas of limestone under Dudley Hill were excavated to produce caverns, many of which were flooded and remain so today. To allow the public access to these, modern mining techniques, including rock-bolts, have been used extensively. Two new sections of tunnel have been built to make a navigable ring for the trip boats.

Before seeing all this for ourselves "in the flesh", we were treated to an excellent lunch organised by Dudley Canal Trust members, Sian Garnell and Tina Gittings.

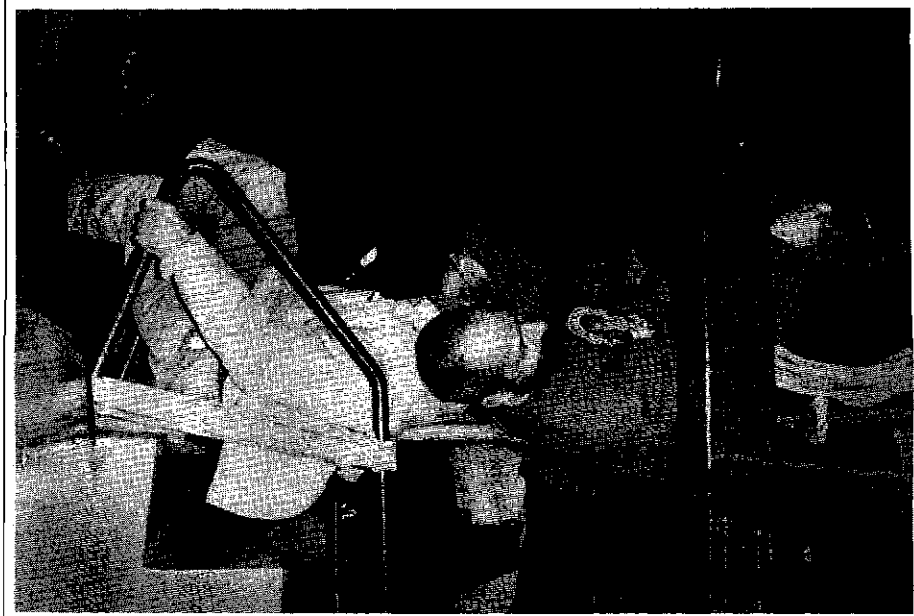
Replete after this meal we then split into two parties to board the trip boats. They were steel-hulled, of narrow boat design with benches and lights down the middle so that we had excellent views. The boats passed through three locks and under a railway viaduct before entering the tunnel at Parkhead Portal. The tunnel is of narrow bore with a very low roof. Its 3,154 yards were built in a straight line although today there is the odd kink. While our guides gave us an informative commentary, the electric motors took us though a varied selection of tunnel linings - old bricks, new bricks, natural stone and modern concrete. In the middle there was a chance to experience the ancient art of legging, which in a narrow tunnel calls for close proximity of the legging crew! On arrival at the far end, having passed under Dudley Zoo, Castle and the cemetery, we arrived at the entrance to the caverns that are unique to Dudley.

The tunnels and caverns open today attract upwards of 30,000 visitors per year. There is plenty for them to see including state of the art audio-visual displays run by the latest micro-chip technology. The Dudley Canals combine old and new technologies to provide a fine example to all in the canal leisure business. We emerged at the Black Country Museum wharf much impressed.

Many thanks to members of the Dudley Canal Trust and to Pete Easto for organising such a rewarding day.

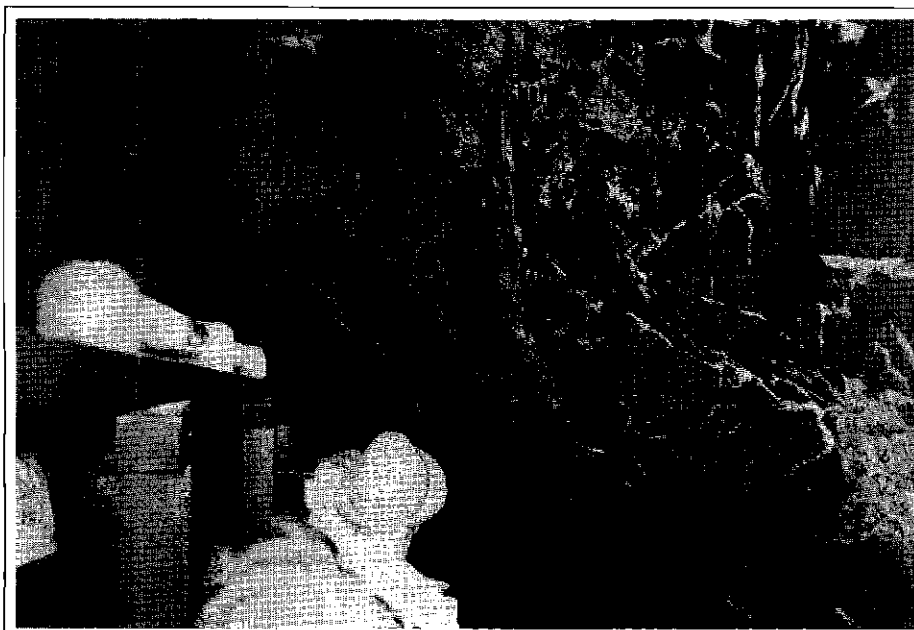


Robin Halliday



David Jowett / Annie Blick

*Above: Robin Halliday and Neil Ritchie discover the intimate joys of legging
Below: Leaving a bare rock bore for a brick-lined section*



Robin Halliday

The Cotswold Xmas Collection

LITERATURE



GIFTS

Galley Cook Book *NEW*	1.95
The Trow (most issues available) each	0.50
Trow Green Binder(holds 12 of any A5 mag)	3.95
Around the Cotswold Canals Vol 1 (10 Walks)	2.95
Around the Cotswold Canals Vol 2 (10 Walks)	2.95
ST&S Canals in old Photos Vol 1	6.50
ST&S Canals in old Photos Vol 2	7.99
Stroud's Golden Valley in old Photos	7.95
Churn & Coln Valley in old Photos	7.95
Around Cirencester in old Photos	7.95
Canal Walks: South (Quintan) incl. T & S	9.99
Simple Steps to Roses & Castles	2.50
Women & Children of the Cut	11.95
Narrow Boat (Rolt)	8.99
Landscape with Canals (Rolt)	8.99

Car Sticker - white with green logo	0.50
Adhesive Sticker - white with green logo	0.50
Ballpoint pen with logo	0.50
Pencil with logo & eraser	0.30
Playing cards with narrow boat design	1.45
Hand-tied rope key-ring	0.85
Coasters with logo (green or blue) 3 for	0.95
Fridge Magnet - green with logo	1.50
Fridge Magnet - Kingfisher	1.45
Tax Disc Holder - white with logo	0.50
Bookmark - green leather with logo	0.85
Eraser with logo	0.40
Pencil sharpener - Hard Hat shape with logo	1.25
Postcard with 4 colour Cotswold Canals pics.	0.15

CLOTHING

T Shirt - green with large printed logo	5.75
T Shirt - as above but in child sizes (state age)	4.45
Sweatshirt - green with large printed logo	11.95
Tennis/Sport Shirt - green/embroidered logo	12.45
Sweater - dark green with embroidered logo	14.95
Baseball Hat - green with printed logo	3.95
Tie - Blue with embroidered logo NEW LOW PRICE	4.95
Sew on Badge - black square/embroid. logo	2.45

PLEASE SPECIFY SIZES S M L XL

TEA TOWELS

THE FOLLOWING TEA TOWELS ON SALE AT
2.45 EACH OR ON SPECIAL OFFER AT
8.95 FOR FOUR

- Horse & Barge
- Cotswold Canals
- Working Boats
- Inland Waterways
- Roses & Buckby Cans
- Around the Cotswolds
- Wonders of the Waterways
- Old Father Thames

ORDER FORM

Use this form (or a photocopy) to make your order. Alternatively, a written Order is acceptable. PLEASE SPECIFY SIZES, COLOURS, ETC.

NAME.....

ADDRESS.....

.....

.....

.....

PHONE.....

Sub Total	£
Add P&P Add 10% Minimum 50p	£
TOTAL	£

Cheques payable to
COTSWOLD CANALS TRUST
please

Please send your order to **DAVID JOWETT, 11 UPPER LEAZES, STROUD, GLOS., GL5 1LA**
☎ 01453 755335

Diary Dates

Sun	1	Dec	Work Party at Hoffman's Towpath - see p. 12 ■
Mon	2	Dec	Western Branch Meeting
Sun	8	Dec	Tunnel Boat Trips - Meeting for volunteers - see p. 16
Tue	10	Dec	Thames End Branch Meeting
Sat	14	Dec	Visiting work party at Siddington (NWPG)
Sat	14	Dec	Thames End Work Party ▲
Mon	16	Dec	Restoration Committee Meeting
Wed	25	Dec	No Promotions & Maintenance Meeting this month but Merry Christmas anyway!
Week	26	Dec	(until 1st Jan) Visiting Work Camp at Park Leaze
Sun	30	Dec	Work Party at Newtown - see p. 12 ■
Wed	1	Jan	New Years Day Walk from Saul Junction - see p. 12
Mon	6	Jan	Western Branch Meeting
Sat	11	Jan	Thames End Work Party ▲
W/E	11/12	Jan	DIGDEEP at Wildmoorway (KESCRG)
Sun	12	Jan	Work Party at Hoffman's Towpath - see p. 12 ■
Mon	13	Jan	Restoration Committee Meeting
Tue	14	Jan	Thames End Branch Meeting
W/E	18/19	Jan	DIGDEEP at Wildmoorway LWRG)
Wed	22	Jan	Promotions & Maintenance Meeting
Sat	25	Jan	Thames End Work Party ▲
Mon	3	Feb	Western Branch Meeting
Sat	8	Feb	Thames End Work Party ▲
W/E	8/9	Feb	DIGDEEP at Wildmoorway (NWPG)
Sun	9	Feb	Work Party at Hoffman's Towpath - see p. 12 ■
Tue	11	Feb	Thames End Branch Meeting
Mon	17	Feb	Restoration Committee Meeting
Sat	22	Feb	Thames End Work Party ▲
Wed	26	Feb	Promotions & Maintenance Group Meeting
W/E	1/2	Mar	DIGDEEP Work Party Wildmoorway (EWRG)
Sun	2	Mar	Work Party at Wallbridge - see p. 12 ■
Mon	3	Mar	Western Branch Meeting
Sat	8	Mar	Thames End Work Party ▲
Tue	11	Mar	Thames End Branch Meeting
Sun	16	Mar	Work Party at Ebley Infill - see p. 12 ■
Mon	17	Mar	Restoration Committee Meeting
Sat	22	Mar	Thames End Work Party ▲
Wed	26	Mar	Promotions & Maintenance Group Meeting
Sun	6	Apr	Cotswold Canals Charity Walk - see p. 14

DIG DEEP

An association of visiting working parties on projects near South Cerney.

Other volunteers are welcome on site with or without previous experience.

Health & Safety at Work practices are observed so the instructions of the team leader MUST be obeyed. Despite these restrictions, it's all GREAT FUN!

For further information: please ring NEIL RITCHIE 01242 581415

DIG DEEP KEY TO WORKING GROUPS

WRG	Waterway Recovery Group
NWPG	Newbury Work Party Group
EWRG	Essex WRG
KESCRG	Kent & East Sussex Canal Restoration Group
LWRG	London WRG
BITM	Bit in the Middle

1997
marks the
Silver Jubilee
of the
Cotswold Canals Trust
(in its present and former incarnations)

Watch out for
Dates of Special Events
in the next TROW

■ Work Parties organised by Richard Attwood. Further information on 01453 885057

▲ Work Parties organised by the Thames End Branch. For further information contact: George Smith (01285 861639), Dave Grobecker (01285 712716) Keith Harding (01451 860181)

Meeting (all start 7.30pm)	Venue	Why you should attend
Western Branch	Whitminster Hotel	To hear news and express your views at a meeting
Thames End Branch	Trust Office, Cirencester	covering issues in your local area
Restoration	Trust Office, Cirencester	To get involved with restoration plans
Promotions & Maintenance	King & Castle, Brimscombe	To get involved with sales & publicity matters and maintenance

Front Cover Photo: Presentation of a cheque to the "Latton Fighting Fund" made by Tim Coghlan (left) to Bruce Hall and local M.P. Geoffrey Clifton Brown (right). (Photo: Nick Wright)

Back Cover Photo: Work at Daneway Portal (Photo: Maureen Poulton) (see p. 2)



Cotswold Canals Trust

