

*Stroudwater, Thames & Severn  
Canal Trust Limited*

# THE TROW

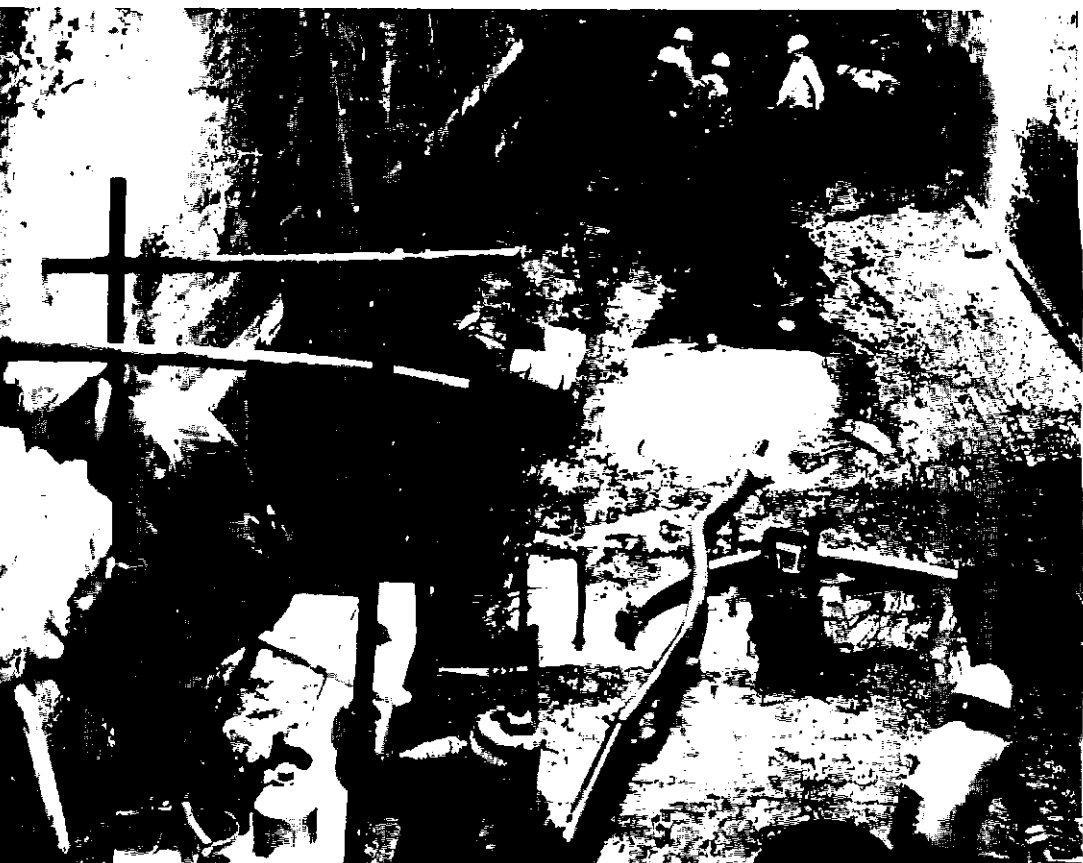
*The Official Magazine for Members and Friends  
working to restore the Cotswold Canals.*

---

Number 46

Summer 1984

---



20p



## C O N T E N T S

Editorial ..	..	..	..	3
Membership Matters ..	..	..	..	3
Secretary's Report ..	..	..	..	4
Stroudwater Dredging ..	..	..	..	5
Stroudwater Working Party Report ..	..	..	..	6
A New Magazine ..	..	..	..	6
Personality Spot ..	..	..	..	8
Southern Canals Visit ..	..	..	..	9
Thames End Working Party Report ..	..	..	..	10
Thames End Branch News ..	..	..	..	10
The Ton Up The Thames ..	..	..	..	12
Tramping the Towpath ..	..	..	..	13
Sales Section ..	..	..	..	14
Book Review ..	..	..	..	16
Diary Dates ..	..	..	..	17
Departmental Heads ..	..	..	..	18

COPY DATES: Autumn Issue: 10th August  
 Winter Issue: 10th November  
 Spring Issue: 10th February  
 Summer Issue: 10th May

PUBLICATION DATES: 1st of the month following

ADVERTISING RATES: Display and Classified -  
 On application to the Editors,  
 see addresses page 18.

**The Views and Opinions expressed in this Magazine do not necessarily represent the views and opinions of the Stroudwater, Thames & Severn Canal Trust Ltd.**

Published by the Stroudwater, Thames & Severn Canal Trust Ltd.,  
 a registered Charity, at 1 Riveredge, Framilode, Glos. Tel: Glos. 740525

Printed by Earle & Ludlow, 77 Victoria Road, Cirencester, Glos.

Layout by Framilode Productions, 1 Riveredge, Framilode, Glos.

Front Cover

**WORKING IN THE DRAINED DOWN BLUNDER LOCK**

Inside Front Cover

**CONSERVATION VOLUNTEERS DRY STONE WALLING AT PUCK MILL**

**REMOVING 40 YEARS OF SILT OUT OF BLUNDER LOCK.  
 JON WILLIS AND FRANCIS TURNER GROUP**

Back Cover

**THEY START YOUNG ON THE STROUDWATER!!  
 FULLY EQUIPPED YOUNGSTER AT WORK (posed photograph)**

## E D I T O R I A L

Although quite a lot of work has been done during the Winter, we are now well into the best of the restoration season. This includes raising the money for restoration and telling the world about restoration, and this issue is being prepared ahead of the scheduled date so that items relevant to both these activities may reach our readers in good time.

On May 7th a **TOKEN TON** load of Midlands merchandise should begin a journey from Coventry with the intention of reaching Lechlade by 9th June.

There a Grand Happening and Gathering of Boats is to take place, on the lines of Lechlade '83 but even better, the organisers say.

Then comes the interesting bit. In order to remind various people and organisations that the right of navigation extends to Cricklade, it is intended to move boat and load up the Thames to that town. If the gardeners' prayers for rain have been answered, boat and cargo will float. If, however, the Thames is in its present dessicated state, both boat and cargo are divisible intoportable pieces.

The arrival of the load in Cricklade will also be celebrated, on Saturday 16th June, when the cargo will travel through the town in procession, pulled by a steam engine.

Further information about all these goings on are elsewhere in this journal, but they are mentioned here for the benefit of those readers who take several weeks to read all the way through. It also gives an opportunity to urge our supporters to come along and enjoy the fun, or better still, come and help as well. These events do not appear in open fields like mushrooms, and extra hands both before and after are always welcome.

## MEMBERSHIP MATTERS

This quarter we are pleased to welcome as new members:-

Mr. C. M. Hart	Eaton Hastings,	Oxon.
Mr. J. Inman	Cumnor,	Oxon.
Mr. J. Garfitt	Redland,	Bristol
Mr. W. Hitchcock	Woodcote,	Oxon.
Mr. G. H. Bannister	Dursley,	Glos.
Mrs. F. R. Rowles	Cainscross,	Glos.
Mrs. M. E. Smith	Chalford,	Glos.
Mr. D. Smith	Cainscross,	Glos.
Mr. and Mrs. D. R. Sheen	Whiteshill,	Stroud
Anne D. Barnard	Redland,	Bristol
Mr. M. A. Parker	Swindon,	Wilts.
Mr. M. R. Thompson	Beckenham,	Kent.

## SECRETARY'S REPORT

My immediate reaction, when asked to write this Report, was "Surely it's not three months since the last one!" and a blind panic as I try to recall the events of the last three months.

We appear, from my telephone and mail, to be operating a multi-million pound corporation, and as a result the Trust has taken on Mary Lyes as a part time Secretary's Assistant to ease some of the load. It would appear that at last we have managed to finally sort out the land exchange at Puck Mill, and by the time you receive this magazine the Trust will at last have achieved ownership of the former Thames & Severn Canal at Frampton Mansell.

Work is steadily progressing on the Stroudwater, and the Company of Proprietors have this year funded us to the extent of £2,000, and expressed their satisfaction with our progress. As a result of our victory on the East/West Bypass in Stroud we are now progressing with the planning of the Wallbridge section. This work is being carried out by Mr.Kaler, a partner with the Trust's Consulting Engineers Freeman Fox Braine & Partners, and progress is steady with many of the apparent problems resolving themselves.

Stonehouse Parish Council and the Company of Proprietors are currently negotiating with the Gloucestershire County Council Highways Authority regarding the effect of the projected roadworks in the Ship area at Stonehouse. Also the Proprietors, Gloucestershire County Council and Stonehouse Parish Council are investigating a major project on upgrading the Canal towpath within the Stonehouse Parish, and I have been involved in both these consultations.

It would appear that at last the Thames End Branch's plant site requirements have been resolved, in co-operation with Messrs. Constants, who have offered us a section of land adjacent to the Spine Road and canal - a victory for Nicholas Melchior's persistence.

The Trust Sponsored Walk took place on 20th May with approximately 200 walkers. Once more the organisers were disappointed with the lack of participation from the membership. This really is your chance to come and see the work being carried out, and also to assist in providing the funds. We did not see many of you. Think about it!

If one adds in the MSC CP Scheme, the day to day running of the Trust and publicity, and all the 1001 other tasks, I begin to appreciate why my time has flown so quickly.

**DAVID H BOAKES**

## STROUDWATER DREDGING

Work has continued steadily at the site, but there have been dislocations due to manpower changes, and we have bid farewell to John Grice, the supervisor, who is setting up in business on his own account. William Frecknell, a member of the Hereford & Glos. Canal Society, has joined us as supervisor for the final two months of the current Scheme, although it is hoped that providing the funding is available we will continue for at least another year.

To date approximately 1/4 mile of the Canal has been dredged, and the psychological barrier of the girder bridge has at last been broken. So it should be full speed ahead to Ryeford. When conditions are right we are dredging approximately 150 - 180 tons of silt out of the Canal per day, and the silt dump is progressively spreading.

At present we appear to have overcome the mechanical problems that have bedevilled the project to date, and an air of confidence is apparent on the site. In conjunction with the Scheme the volunteers, ably assisted by Ernest Carrington, have virtually completed fitting the new footbridge, in itself a great achievement. We have broken the first barrier to navigation. It is hoped that soon two or three barges a day will be moving through this bridge full of dredgings.

DAVID H BOAKES



NEW DRAG LINE EMPTYING BARGE

## STROUDWATER WORKING PARTY REPORT

Well, another quarter has raced by with good progress being made, bearing in mind our limited resources. Two main jobs have been tackled - Blunder Lock and Ryeford Swing Bridge.

**BLUNDER LOCK:** We have had two further weekend digs in Blunder Lock, aided on the second occasion by the Francis Turner Group. There is now one more weekend's digging left, and then we can concentrate on replacing the bottom sill and the manufacture of new lock gates. Grooves were also cut for stop planks and an escape ladder.

**RYEFORD SWING BRIDGE:** Another job tackled this quarter was the installation of the new swing footbridge at Ryeford, which has been fabricated by Trust members through the Winter, and which had become a priority due to the M.S.C. Dredging Scheme steadily nearing the fixed bridge. Work was started on Good Friday, with the transport of materials to site and the excavation of the foundations, including the removal of a tree stump and the old bridge pivot. Work continued over the weekend with bricklaying and concreting, till by Tuesday the new foundations were ready to accept the new bridge.

The usual volunteers worked extremely hard, but they would like to thank particularly Bill Evill (senior) who welded and assisted with the steel fabrication, and Ernest Carrington, whose brickwork will certainly be admired for years to come. Also Mr. and Mrs. Glen at Ryeford Lodge, whose assistance and hospitality are greatly appreciated.

Other small jobs have been undertaken during this period, one of which was the reinstatement of the towpath below Pike Bridge, which had literally become impassable.

Besides our regular working parties we are planning a special weekend Blitz over the August Bank holiday at Coates, when we intend to tidy up the Coates Tunnel Portal and surrounding area. Therefore why not make a note in your diary, and come along with the family for what we feel would be a most pleasant day in a Cotswold beauty spot.

**JON WILLIS**

## A NEW MAGAZINE

We have received a copy of the first issue of a new magazine called **NARROWBOAT**. It is in a biggish format, (8" x 11"), and has lots of pictures, many of them in colour. It also has some very interesting features and stylish setting. The editorial team consists of Harry Arnold, Neill Allsop and Chris Cattrall, and they would seem to be boaters with a journalistic bent rather than the other way round.

The magazine is published on the third Friday of each month, and we hope to include with this **TROW** a descriptive leaflet which should ensure that you contact your newsagent at once.

**DERYCK WATKINSON**



RYEFORD BRIDGE: FITTING PIVOT - MIND OVER MATTER - IT FITTED



## PERSONALITY SPOT

Eric Duff holds no office in the Trust, but has the distinction of being our longest distance volunteer. He heard about the Thames-Severn Waterway when the Anthony Burton Appeal was shown on T.V., which he says is only a year ago but seems longer, and in spite of living in Dartford, Kent, he has been a regular attender at Thames-End Working Parties ever since.

Eric Duff is a Londoner by birth, and went to Colfe's Grammar School in Lewisham. His first encounter with canals was, strangely enough, in Lancashire where he and his sister went to stay with an aunt who lived near the Leeds & Liverpool. Being told to keep away from the canal naturally left them no alternative but to go there whenever possible, and he distinctly remembers seeing barges pulled by horses. It must have been one of those post-War austerity times.

Eric admits to a lifelong interest in things nautical, so it is not surprising that he now works in the Customs Service at one of our major ports. He is not, we should explain, one of the chaps whose eye you try to avoid as you stroll through the Green Channel with six bottles of whisky in your beach bag. Our man looks after lorries and their contents, trying to ensure that boxes marked "Sewing Machines" have not been inadvertently filled with machine guns, and that vehicles entering this sceptred isle do not have spare drivers resting under the floorboards.

An earlier part of Eric's career was, however, in the Marines, a fact which does not surprise anyone who has worked with him, because he shows a marked tendency to be where the going is roughest. If unable to continue with one job, Eric will find another, and it has been found desirable to keep a reserve stock of bricks for cleaning so that he is protected from any danger of inactivity.

At a personal level it would be fair to say that Eric is gregarious without being talkative, and he has the rare ability to say nothing unless something needs to be said.

Whilst doing his very useful bit at the Thames End, Eric has some ideas for the future, in particular that the restored waterway might need some kind of customs check point along its length. The West Country has some excessively potent alcoholic drinks, which would cause havoc if they got to London, where the inhabitants are not used to anything stronger than gin.

Eric Duff has generously offered to set up and operate a control point somewhere along the canals, perhaps with the use of a small pinnacle for pursuing suspects. In return for a modest tax-free honorarium he is prepared to guarantee that no scrumpy cider or other lethal beverage will pass along the restored canals except inside boaters. If Eric is still speaking to us, we look forward to seeing him at the next Thames End working weekend.

## SOUTHERN CANALS VISIT

Trust members may not be aware that there exists a loose federation of canal restoration societies based on the South of England, which meets every six months. We were honoured to be hosts to this group on Sunday 29th April, when approximately 30 delegates, including Ken Goodwin, the IWA Chairman, were given a conducted tour of our Canals and worksites.

The visit commenced at Cricklade and worked its way westward to Eastington, visiting Cerney Wick, Coates, Daneway, Wallbridge, the Ryeford dredging site and the plant workshops at Blunder Lock. Our visitors, who last visited us some three years ago were most impressed with the accelerating progress the Trust is making towards its targets.

These meetings are not only an update on progress, but also an interchange of views and ideas to overcome problems, discussions being held at Cricklade, the Ship Inn, Brimscombe, and Framilode, as well as on site.

Both we and our fellow delegates were most pleased with the attendance of Mr. Goodwin on one of his fact-finding visits, and it is hoped that he learned much of our commitment to report back to his Association. We thank all those who assisted with the visit and can report that all our visitors were most impressed with the Stroudwater and Thames & Severn Canals.



PERSONALITY OF THE MONTH: ERIC DUFF

## THAMES END WORKING PARTY REPORT

Activity has continued at the lock at Cerney Wick, where the final sections of brickwork have now been completed and the last of the coping stones have been replaced. However, the Working Party Organiser insists that the job is not complete until mooring rings have been provided along the top of the wall and is determined to do this at the earliest opportunity. He thinks ten is about right, and they are about six inches in diameter, so if anyone knows where anything suitable can be found will they please contact Nicholas Melchior.

We have also managed to do quite a lot of towpath clearing and are interested to find that if the towpath is clear a surprising number of people seem to enjoy walking along it. It has become our practice to indicate, whenever possible, that the clearance of this amenity is almost entirely the result of the efforts of Trust members and supporters.

As well as the section from the Spine Road to Latton, there was a blitz between King's Reach and the Coates Round House, with which we were helped by a party from the Cotswold Community. They showed outstanding zeal in throwing tree trunks around, in fact some of the older hands found it quite exhausting just watching.

At long last, the lock gates have received some further attention. The heel post of the first one has finally been freed of its rivets and clamp plates and moved partly off the tenons. These turned out to be slightly more complicated than we expected, but we now know that there are no more fixings to find and can proceed to the next stage.

Our scheduled working party on 24/25th March was spoiled by bad weather, but there have been several extra sessions organised at short notice by 'phone. Anyone who finds themselves with a bit of spare time, or who feels like a change from gardening, stamp collecting, or whatever, should please 'phone Nicholas Melchior.

**DERYCK WATKINSON**

## THAMES END BRANCH NEWS

So far this season we have managed to maintain a very high ratio of doing things to talking about things, but there are one or two items to be noted. The negotiations for land near the Spine Road are continuing, and we have a lot of towpath which people can and do walk along. At the moment attention is on the **ONE TON LOAD** which is heading towards us, to be greeted with revelry and feasting at Lechlade and Cricklade. It may also need to be greeted by massed cohorts of shovers and haulers in the shallow bits between those two places.

The problems likely to arise were clarified somewhat by an illustrated lecture given in Cricklade on 5th May. The occasion was arranged jointly with the Thames Society, and the speaker was Mr. Nigel Widgery, a member of the firm of Consulting Engineers who did the Feasibility Study of Navigation on the Higher Thames. One interesting observation was that the construction of the Thames & Severn Canal had been a cause of the Thames being left un-navigable between Inglesham and Cricklade.

**DERYCK WATKINSON**

EXPERIMENTAL LIFTING DEVICE. REPLACING A COPING STONE  
AT CERNEY WICK. IT WORKED, BUT AN IMPROVED VERSION IS  
NOW ON THE DRAWING BOARD.



### THE TON UP THE THAMES

This is not an attempt to attract the biggest speeding fine ever, but a scheme to raise money for and draw attention to the improvement of the Thames between Lechlade and Cricklade. A group of keen types from the Oxford & South Bucks. Branch of the IWA have set off from Coventry with a boat carrying a ton of cargo to Cricklade. The interesting bit is expected to be between Lechlade, where **LECHLADE '84** will be held to get everyone in the mood, and Cricklade, where **CRICKLADE '84** will provide an opportunity for triumphant rejoicing.

To improve their chances, the "boat" will divide into two eighteen foot sections, and is claimed to need only six inches of water to float. Furthermore, the cargo is in half hundredweight lots which can be carried in eight inches of water if you wear wellies. Apart from some reedy sections there are believed to be shallow bars, the underwater kind, at Inglesham, Hannington Bridge, Castle Eaton, and several places between Eysey and Cricklade.

The organisers are praying for rain, just enough to float the boat without spoiling the fun, and putting out a three-line whip for persons with musclepower, brainpower, or a winch, to stand by between 10th and 16th June.

The diagram shows the general layout, but we suspect that you look at the Ordnance Survey of the area (Sheet 163) and keep an eye open for local publicity.



**TUG AND BARGE IN FULL FLIGHT ON STROUDWATER. WILL IT HAPPEN ON THE HIGHER THAMES? DOUBTERS, PLEASE NOTE.**

**UNIVERSITY OF BRISTOL** in association with **CORINIUM MUSEUM**

**TRAMPING THE TOWPATH** A series of summer evening conducted walks along the Thames & Severn Canal.

Course Tutors: David Viner, F.S.A., B.A., F.M.A.  
Edwin Cuss

This University extra-mural course of four meetings will be held on Friday evenings, 8th, 15th, 22nd and 29th June from 7.00 - 9.00 p.m., meeting at different venues along the towpath.

The Thames & Severn Canal runs through some of the most attractive Cotswold countryside and was opened in 1789. After a chequered history, it was finally abandoned 50 years ago. Recent restoration activity has brought a new lease of life and the walks will provide an opportunity to examine both the history and recent work of this important route linking the two great rivers of Southern England.

- |           |  |
|-----------|--|
| June 8th  | from Chalford, looking at the round house and wharf and moving Eastwards to Red Lion Lock and beyond.  |
| June 15th | from Frampton Mansell, a circular walk to Whitehall and along the towpath through Puck Mill.   |
| June 22nd | the summit level from Tunnel House, looking at the tunnel portal, Kings Reach, Coates round house and the source of the Thames; plus Daneway Basin area if time permits. |
| June 29th | from the Cotswold Water Park information point on the Spine Road, to Wilmoreway locks and Boxwell, taking in Cerney Wick round house if time is available.               |

**COURSE FEE:** £4.60 for the four walks.  
**PRIOR ENROLMENT ESSENTIAL**

**Contact:** Dr. J. H. Bettley,  
Staff Tutor in Local History,  
University of Bristol,  
Department of Extra-Mural Studies,  
32 Tyndall's Park Road,  
Bristol, BS8 1HR  
Tel: 0272 24161 ext. 686

## SALES SECTION

Encouraged by the glorious Easter weather, and the friendly co-operation of the owners of Tunnel House, we had two very profitable weekends at the caravan recently, and depending on weather and other commitments, we hope to return to this venue as often as possible during the Summer months.

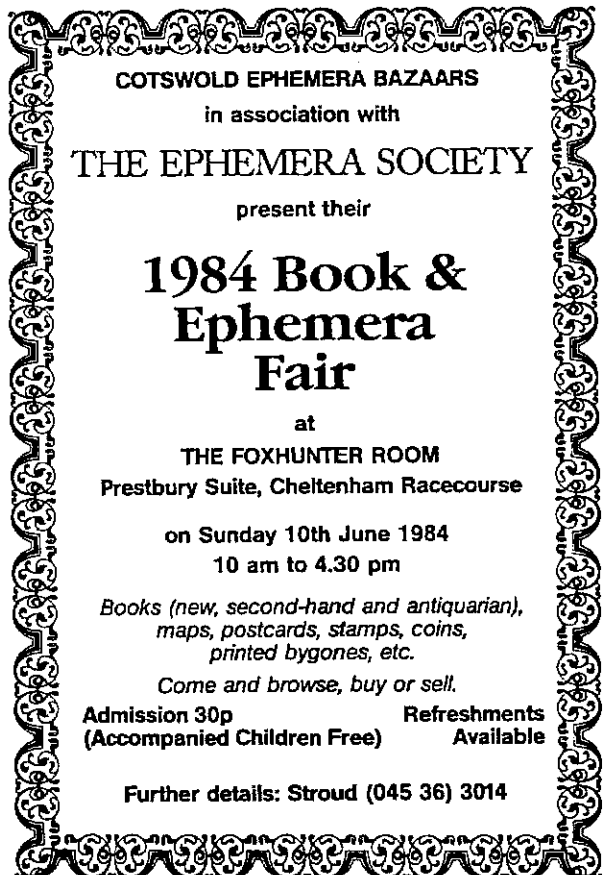
The Trust has been very much in evidence in Stroud during May. Our members Nancy and Robert Dunk of RJD Fine Arts, Wallbridge, have very kindly provided a beautiful window display to publicise our goods and also the Sponsored Walk, and we are most grateful to them. We have also had the use of a window in the King Street premises of the Anglia Building Society, and our more-or-less permanent display at E. J. Rowell & Co. in Rowcroft continues to attract many customers. Our thanks to all the above, and all others who contribute in cash or in kind from time to time. Don't forget we can take almost anything (apart from old clothes or bedding!) and turn it into a profit for the Trust - even house clearance can be arranged if necessary. Telephone me on Stroud 3014 (home) or Stroud 3381 (office) if you have anything to dispose of.

It will be seen from the Sales List on another page that the long-awaited Towpath Guide is at last with us. All those who ordered in advance should by now have received their copies, and if you have not ordered yours yet, please do so as soon as possible, before the price goes up! For those whose pocket does not run to the Guide, we still have the lower priced 'Canal Walk through Stroud', covering Eastington to the Daneway.

A further book now in stock is 'The New Navvies' by member Dr. Roger Squires. This is a most interesting book about the efforts of the various Canal Restoration Societies over recent years, and there is a section covering our own activities.

Finally, we have had produced (in Stroud) a new Trust Tea Towel, showing illustrations of Coates Portal, Chalford Round House, Lodgemore Mills and Nutshell Bridge, Stonehouse. These are good quality towels and are selling fast, so order now before we sell out!

RON NOTT



**COTSWOLD EPHEMERA BAZAARS**  
in association with  
**THE EPHEMERA SOCIETY**  
present their  
**1984 Book &  
Ephemera  
Fair**  
at  
**THE FOXHUNTER ROOM**  
Prestbury Suite, Cheltenham Racecourse  
on Sunday 10th June 1984  
10 am to 4.30 pm  
*Books (new, second-hand and antiquarian),  
maps, postcards, stamps, coins,  
printed bygone, etc.*  
*Come and browse, buy or sell.*  
**Admission 30p**                      **Refreshments**  
**(Accompanied Children Free)**      **Available**  
**Further details: Stroud (045 36) 3014**

## SALES SECTION

Items available by post from our Sales Manager, Mr. R. O. Nott, Lynfield, Frome Park Road, Stroud, Glos. GL5 3LF (Tel Stroud 3014). Prices quoted include a contribution towards postage and packing. Orders over £15 in total qualify for a 5% discount.

Cheques and postal orders should be made payable to 'Stroudwater, Thames & Severn Canal Trust'.

A Canal Walk through Stroud by Trevor Roberts	£1. 45
Cirencester As It Was by David Viner	£2. 95
Narrow Boat Painting by A. J. Lewery	£7. 25
The New Navvies by Dr. R. W. Squires	£10. 50
The Severn Bore by Frederick Rowbotham (new edition)	£5. 35
Stroudwater and Thames & Severn Towpath Guide by D. Viner and M. Handford	£5. 50
The Thames & Severn Canal by Humphrey Household (now reprinted)	£10. 45
The Thames & Severn Canal in Photographs by D. Viner	£2. 80
Books by John Gagg: Canal Tunnels )	
Narrow Canals )	
Broad Canals )	
Locks )	
Waterways Sights )	
Canals in a Nutshell )	
Back numbers of THE TROW: Nos. 1, 3, 4, 5, 11 to 35	£0. 15 each
Nos. 36 to date	£0. 25 each
Photocopies of Nos. 2, 6, 7, 8, 9 and 10	£0. 50 each
Black and White drawing of Tunnel House suitable for framing (approx. 8" x 6")	£0. 30
Set of 4 Trust Colour Postcards (Tunnel House, Daneway Inn, Kings Reach and Chalford Round House	£0. 30
Pack of 8 Stroudwater/Thames & Severn Notelets (4 different scenes with envelopes)	£0. 50
Trust Car Stickers	£0. 25
Trust Ballpoint Pens	£0. 20
Trust Commemorative Brass celebrating Restoration of Coates Portal - limited issue of 200 now only 12 left	£5. 00
NEW: Trust Tea-Towel (new design showing Canal Scenes around Stroud - available in Blue or Brown	£1. 95
Tea-Towels - 50% linen/50% cotton - designs available:	
Britain's Canals and Rivers )	
Waterside Pubs )	
Canals and Narrow Boats )	
Waterside Plants )	
Kingfisher )	
Operation of Canal Locks )	
Canal Code )	
Glass Cloth in Waterside Flora and Fauna Design	£1. 35



## BOOK REVIEW

### STROUDWATER, THAMES & SEVERN CANAL - A TOWPATH GUIDE

Authors: David Viner and Michael Handford  
 Published by Alan Sutton. Softback £4.95.  
 Available from Trust Sales.

The book we have all waited for, after several years' pre-publicity, has at last been published. Having read it one always has a problem when a book is a collaboration between two authors, particularly when each writes a separate section. The fairest method of reviewing this is to consider it in two halves, the Stroudwater Guide and the Thames & Severn Guide.

Both authors are members of the Trust, and are consequently well-known to members. So one would expect their work to be accurate. Unfortunately this is not the case with the Stroudwater section. Your reviewer has access to and has studied much of the Company of Proprietors' records. It is unfortunate that Mr. Handford appears to have stopped his researches around 1800. For instance, the building known as Lock House at Framilode was built in 1816, not in the late 1700's. This information is readily available to anyone who makes a cursory examination of the Company records. The rest of the section is similarly riddled with inaccuracies that would not have occurred if the full records had been consulted.

On the other hand, once more the Thames & Severn has received a sympathetic and accurate study from David Viner. I only found two minor errors. Surely David, it is not Golden Valley lock! The section obviously reflects much study, tempered with local knowledge and affection for the subject.

The illustrations are interesting and many are fresh. It is a pity that the maps, whilst adequate, do not show the towpath and linking footpaths. Perhaps this could be overcome at a later date.

In conclusion the Guide, solely for the Thames & Severn content, is well worth £4.95, and should be on every member and friend of the Canals' bookshelf for ready reference.

**HARRY BUTLER**

## CORRECTION

We are indebted to Barry Balderstone for pointing out an error in the Spring issue of the TROW. The OS ref. for Eastington Depot is SO 786061, and not OS 786061, which would seem to put our Depot in the middle of the North Sea. Our apologies, and we hope no-one was drowned in an abortive attempt to find us!

**DIARY DATES**

<b>JUNE</b>	9/10	<b>RIVERSIDE FESTIVAL - LECHLADE '84</b>
	10	Stroudwater Working Party
	16/17	Cargo arrives in Cricklade <b>CELEBRATIONS by THAMES END BRANCH and other interested parties in CRICKLADE</b>
	23/24	Thames End Working Party
	24	Stroudwater Working Party
<b>JULY</b>	8	Stroudwater Working Party
	10	<b>THAMES END ANNUAL GENERAL MEETING</b>
	22	Stroudwater Working Party
	28/29	Thames End Working Party
<b>AUGUST</b>	5	Stroudwater Working Party
	18/27	Thames End Work Camp
	19	Stroudwater Working Party
	25/26/27	<b>COATES BLITZ</b>
<b>SEPTEMBER</b>		
	9	Stroudwater Working Party
	23	Stroudwater Working Party
	29	<b>TRUST ANNUAL GENERAL MEETING</b>

Thames End evening meetings are held at The Crown Inn, Cerney Wick, on the second Tuesday of the month, Summer and Winter, at 8.00 p.m.

Additional dates to those shown above will be worked as necessary - details on request from organisers below.

Trust volunteers often work Tuesday evenings on plant and maintenance, Saturday mornings or all day at Blunder Lock, and other weekend working can be arranged. Please contact Jon Willis if you prefer other times to those above.

Stroudwater Working Parties meet at Eastington Plant Depot (OS Map Ref. SO 786061) on Sundays at 9.30 a.m. Directions to work site, if elsewhere, will be posted on the building doors.

Thames End Working Parties - work starts at 10.00 a.m. Directions on the location of the day's work are posted at Cerney Wick Lock (OS Ref. SU 079960). Further information - contact Nicholas Melchior, Swindon 762510.

Accommodation with catering is available for those wishing to stay overnight (groups and individuals) but adequate notice is essential, please.

Information plant and equipment, also work camps, away visits and Daneway, contact Alan Jones on Stroud 78656.

DEPARTMENTAL HEADS

Archivist	D J Viner, BA, AMA, 8 Tower Street, Cirencester, Glos.
Events Organiser	Vacant
Maintenance Organisers (restored sections)	A Number of Vacancies
Membership Secretary	David Jordan 6 Hazelton Road, Marlbrook, Bromsgrove, Worcs.
Asst. Membership Secretary	Geoff Garraway 29 Mill Farm Drive, Paganhill, Stroud, Glos.
Press and Publicity Officer	Vacant
Sales Manager	R O Nott, FILC, Lynfield, Frome Park Road, Stroud (Tel. Stroud 3014)
Thames End Branch Chairman	Norman Townsend 14 Drew Street, Swindon, Wilts. (Tel. Swindon 45330)
Thames End Branch Secretary	Deryck Watkinson 12 Hampton Grove, Meysey Hampton, Cirencester, Glos. (Tel. Poulton 661)
Cheltenham/Tewkesbury Branch Chairman	John Barlow Yew Tree Inn, Chaceley Stock, Chaceley, Glos. (Tel. Tirley 333)
Trow Editorial Team	Harry Anderson                      2 Queenshead Cotts., St. Marys, Chalford, Glos. (Tel. Brimscombe 884913)  Deryck Watkinson (as above)
Trow Material to	Deryck Watkinson (as above)
Trow Distribution Organisers	P A T Griffiths,                      10 Smythe House, The Waterloo, Cirencester, (Tel. Cirencester 4160)  D C Pinnock,                      7 Vicarage Close, Churchdown, Glos. (Tel. Churchdown 856233)
Working Party Co-ordinator and Plant Engineer	Alan Jones                      2 Wyclift Villas, Uplands Road, Stroud, Glos. (Tel. Stroud 78656)
Working Party Organisers:	Nicholas Melchior (Thames End) 28 Grove Hill, Highworth, Swindon, Wilts. Tel: Swindon 762510  Jon Willis (Stroudwater) 82 Chatsworth Avenue, Tuffley, Glos. Tel: Gloucester 416694

These and other vacancies still need filling urgently to release existing Officers for their own duties. Posts can be filled either by individuals or small groups, assistance always being available from Council Members and other Officers. Details from the Secretary.



RYEFORD BRIDGE: RELIEF - IT SWINGS

RESTORED WEST WALL OF CERNEY WICK LOCK. ALL IT NEEDS  
NOW IS A SET OF MOORING RINGS. OFFERS, PLEASE.





COME TO RIVERSIDE PARK, LECHLADE (off A361)

for

**LECHLADE '84**

a

RIVERSIDE FESTIVAL

open from 11am 9th & 10th JUNE 1984

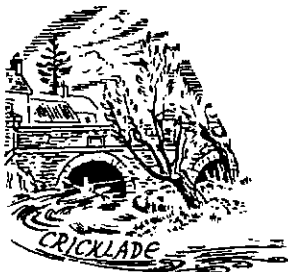
TRADE, CRAFT and CHARITY STALLS

FIELD and RIVER DEMONSTRATIONS

BOAT RALLY, SILVER BAND

SATURDAY EVENING BARN DANCE

Organised by IWA Oxford & South Bucks. Branch (Reg. Charity No. 212343) and  
The Stroudwater, Thames & Severn Canal Trust (Reg. Charity No. 269721)  
on behalf of IWA(Rallies) Ltd.



Lucky Programme: 25p

