

*Stroudwater, Thames & Severn
Canal Trust Limited*

THE TROW

*The Official Magazine for Members and Friends
working to restore the Cotswold Canals.*

Number 59

Winter 1987



30p

Contents

COPY DATES

SPRING	1st February
SUMMER	1st May
AUTUMN	1st August
WINTER	1st November

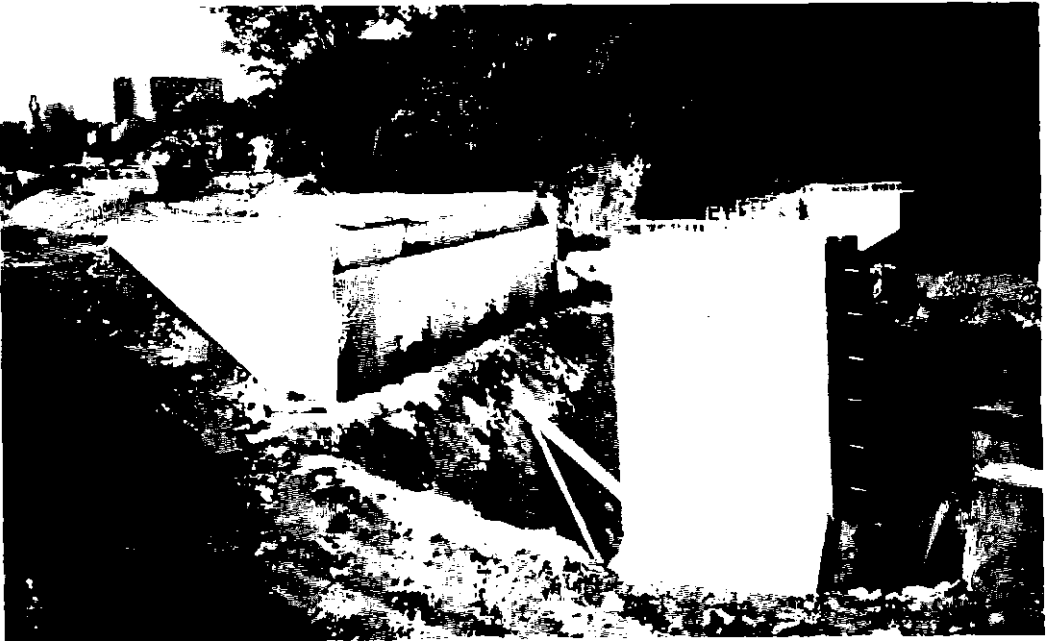
THE VIEWS AND OPINIONS IN
THIS MAGAZINE DO NOT
NECESSARILY REPRESENT THOSE
OF THE STROUDWATER THAMES &
SEVERN CANAL TRUST LIMITED.

Secretary's Report	2
M.S.C. Work Report	4
Thames End Branch Report	6
Western Branch Report	7
A.G.M./Council Members' Report	10
Raft Race 87	13
Members' Day	14
Membership Matters	16
Letters to the Editor	17
Sponsored Walk for 1988	18

Published by the Stroudwater, Thames & Severn Canal Trust Ltd.,
a Registered Charity at 1 Riveredge, Framilode, Gloucestershire

Printed by Earle & Ludlow, 77 Victoria Road, Cirencester, Glos.

Pictorial



BRIDGE CONSTRUCTION NEAR WALLBRIDGE

The construction of the East/West Bypass continues apace. Here we see the accomodation being made for our diversion. The new road will go over and our canal (glimpsed in the background) will go under.

Secretary's Report

We are once more approaching the Trust's Annual General Meeting which will be held on Saturday 21st November, in Stroud's Subscription Rooms. It has been a year of progress and change for your Trust, the canals and for the heritage of the district.

Despite our constant financial constraints, we have continued to progress with dredging and serious lock rebuilding. Up to now our work has been on a "fire engine" basis carrying out works where they were needed due to outside pressures or requirements; now for the first time we are reaching the point where we can commence restoration in a logical sequence. It is our intention to concentrate our efforts from Pike Lock eastward towards Stroud - already we have Blunder and Newtown Lock chambers approaching completion. We will then dredge from Bond's Mill down to Pike Lock hopefully with the locks gated, so that we have a usable length that can be used for trip boats and school visits.

Our next task will then be the massive reconstruction of Ryeford Double Lock, provided the insurance claim for the recent water main burst is settled. We will then dredge from the Stonehouse Bridge to Railway Crossing.

Should funding and labour be available, concurrently we wish to commence work on Wallbridge Lock chamber and successively rebuild Bowbridge, Griffins Mill and Ham Mill Lock chambers. As an indication of the materials content, Newtown Lock will consume 40,000 bricks, 100 tons of gravel, 40 tons of sand and 30 tons of cement. The majority of this work will be carried out by M.S.C. CP labour, whilst our volunteers will carry out smaller specific works in between building and running trip boats, collecting waste paper, metal and all the other various unsung tasks they carry out. The Thames End will for the time being carry on in a lower key. We have been allocated twenty five places for next years CP scheme when we will join the Gloucestershire C.C. Agency.

To aid our progress the Company of Proprietors have increased their financial support to £8,000 in the current 1987 year and a similar sum has been promised by Stroud District Council for their 1987/8 financial year. The Proprietors have so far donated £5,665 from their allocation and a claim has been forwarded to the District Council. Our previous works are producing dividends with the income from our primitive trip boats at Bowbridge and Ryeford.

The Stroud East/West Bypass is progressing towards an opening date later in the year and we will then have to consider our proposed diversion, which cannot commence for two years due to stabilization of the embankments. The County Council have agreed navigation sized crossings at either end of the projected Ebley Bypass and the details are under discussion at present.

A further major advance has been the inclusion of our canals, from Westfield Lock to Chalford, in the Stroud Industrial Heritage Conservation Area, which should assist us in obtaining grants for our work. Stroud District Council are also financially supporting a new overall Trust, the Stroud Valley Project, of which your Trust will be a founder member, to co-ordinate works on rehabilitation of the built and natural environment in the Stroud Valleys. Our project is a key section in its overall scheme, "the thread in a string of pearls".

On the deficit side, the famous Nutshell Bridge has been found to be in serious danger of imminent collapse and will require complete rebuilding.

Our new Membership Secretary, Richard Attwood, is currently examining ways of involving our members and friends in the project and held a highly successful Stroud Area Members' Afternoon at Ryeford on September 26th which he hopes will be the first of a series including visits, meetings and walks. Richard is investigating the possibility of setting up similar meetings for the Thames End Branch members in the near future.

See you at the Annual General Meeting!

DAVID H. BOAKES

STROUD (045-36) 4081

THE SHAMBLES,
HIGH STREET,
STROUD, GLOS.
GL5 1AP

*J. J. Davis Ropes
of Stroud*
(Established over 100 years)

**ROPES, — CORDS
TWINES**

**WHOLESALEERS OF BASKETWARE &
FURNITURE**

HESSIAN — WEBBING

HALTERS — HAYNETS
SLINGS

POLYPROPYLENE

STRAPPING & MACHINES

*** Advertise
Here! ***

Help the Stroudwater, Thames &
Severn Canal Trust by helping
yourself!

Please contact Richard Attwood
on Brimscombe 885057 Rates are

Full page	£25.00
$\frac{1}{2}$ page	£12.50
$\frac{1}{4}$ page	£ 6.50

We offer 10% discount for pre-
payment of four consecutive
quarterly issues.

M.S.C. Work Report

BRICK & BANK GANGS

In the period that I have been involved with the Canal Trust, I have encountered many critics of our M.S.C. Scheme. They shook their heads in disagreement as I pointed out that an M.S.C. Scheme would be the only realistic means of getting restoration fully off the ground. Well at last, I no longer have to waste time, energy and charm in an attempt to state my case. All I now have to do is to take them on a visit to Newtown Lock where they can witness at first hand, the work achieved by our M.S.C. Brick Gang during the past eight months.

Since the last report which was submitted only a few weeks ago, we have completed the far side lower chamber wall. The scaffolding was then transferred to the near-side where we stripped the top half of the wall of old brickwork. We are now in the process of rebuilding and hope to have completed the lower chamber as far as the gate recess walls by early October.

The Bank Gang recently finished its stint at Coates and will soon be relocated. However, they have no time to relax! In the interim they will be helping to clear Newtown Lock chamber of rubble and generally clearing the site

DREDGING GANG

Since the last report we are now settling down to regular, uninterrupted dredging. We have improved the dredger's performance by a series of modifications by Gaskens Hydraulics. Dredging is at present concentrated immediately adjacent to the old railway (cycle track) bridge, where an accumulation of silt, comparable to that encountered in Ryeford Basin, is being removed barge by barge. A combination of reduced width of canal, under and beyond the bridge and an adjacent feeder, probably accounts for the large volume of silt here.

One can't help feeling rather proud of the work achieved to date when looking back up the dredged canal behind us. The satisfaction of actually using this restored section when plying up and down with laden barges brings a great sense of achievement to all the dredging crew and particularly their supervisor! We hope the boat trippers realise the efforts needed for their Sunday afternoon trips to be so uneventful. It also speaks better than words, the seriousness of our aim to restore this canal: there are not many cynics to be found on the towpath these days! Worthy of mention is the recent completion of resurfacing the towpath between Ryeford Basin and Ebley by the G.C.C./M.S.C. workforce - further complimenting our restoration work. We are getting there!



ABOVE: The dredger in action near Ryeford BELOW:View from the barge.



Thames End Branch

Our little band of devoted toilers continues to get on with the job, helped from time to time by reinforcements from Bristol University and other relatively distant places. A recent boost to our morale has been the granting of Planning Consent for the long awaited Spine Road Plant Site. The Consent is unfortunately for one year only, but our information is that it may be renewed if we do a good job and don't annoy the neighbours. It also goes without saying that work will cease if our little patch of filled-in gravel pit turns out to harbour rare species of orchid, butterfly, bat or natterjack toad. In the meantime we would rather like work to start, beginning with retrieving our sectional garage from Norman Townsend's front garden, where he has kindly been tolerating it for some time. The garage is made up of rather large concrete blocks and we could do with a small lorry or a biggish trailer for a trip to Swindon, as well as some help and advice from somebody who has recent experience of putting one together.

We have further generous offers of help with the actual site preparation from our landlords, Hills Gravel, who have an endearing trick of turning up with a large machine which does the work of three or four workparties in an hour or two.

There are also some sections of steel fencing to be brought from Eastington and put together to make an enclosure which we hope will discourage all but the most dedicated vandals.

This could be a good time for our more sleeping kinds of partner to bestir themselves. The work is not very difficult, hardly dirty at all, and you have something to show for your efforts at the end of the day. You might even get your picture in the Trow, but only if you like that sort of thing. We have of course the usual range of towpaths to be kept clear, for those who see canal restoring primarily as a means of working off aggression.

DERYCK WATKINSON

Some of our more observant readers might have wondered what the new "Pictorial" feature was all about. The fact of the matter is that "due to circumstances beyond our control" the caption was omitted. The photo reprinted here was of course a record of the presentation to Doug Blake of the Western Branch of a cheque from Luciano Magalotti, Landlord of the Clothiers Arms in Stroud, the money having being raised from the successful Woolsack Races.



Western Branch

7

In writing my notes on the activities of the Branch, I spend much time considering how not to become repetitive. Although much of our work is of an ongoing nature, the benefits are cumulative and worthwhile. The collection of waste paper, the trip boating, work parties, social events, letters to the press etc., all these activities are enjoyable and achieve the inter-related benefits of raising finance, public awareness and increasing support for the Trust.

The Raft Race this year at Ryeford we consider the most successful so far in terms of entertainment and fund raising. The September "Noggin & Natter" at the Bell was much enlivened by a video of the event, the censored version being shown at the Clothiers Arms a couple of weeks later. The waste paper collection continues to accelerate and, being a substantial source of funds, the help of local members keeping up the supply is much appreciated. If you have any difficulty in delivering at Blunder Lock, please let us know.

The first social "get together" organised by Richard Attwood was held on Saturday 26th September with an excellent response to his circularisation of members. Those attending the meeting at the Ryeford Hotel were much impressed by the excellent update on Trust activities given by Dave Boakes. The subsequent boat trips along the Ryeford pound gave them a practical view of our current achievements. On the trip boating, we shall soon be at the end of the season which has proved successful and profitable. At the Bowbridge end we carried our thousandth passenger in August and on the Bank Holiday Monday carried a record hundred and thirty passengers. At the Ryeford end trade is increasing after a slow start. The boats there are now powered by our 10 hp Honda and we have a nearly new 8 hp Yamaha (at a very generous discount from A & D Marine in Gloucester) for the Bowbridge boat. This has certainly proved its worth in hard service as the pound has been steadily dropping and is currently a foot below wier level. Progress above Griffin's Wharf with a full passenger load has been a difficult undertaking at times, but an excellent object lesson in the value of boat traffic in maintaining a clear channel!

The real "muck and sweat" will be getting under way in the latter half of October, with forty volunteers from Wycliffe College to give us a head start on our Winter clearance. In order to continue a regular work programme we need names, there is a great deal to do, so if you have time to spare weekends, please get in touch with Doug Blake or myself now, and we can get organised. (As an inducement to those who have open fires, "them as cuts the logs gets the logs").

At the September Branch Meeting, our Secretary Clint Taylor asked to resign his duties due to pressure of work and other commitments. Having served since formation of the Branch and rendered invaluable service, we are happy that he wishes to remain on the Committee. It is salutary to consider that the present Committee includes all those

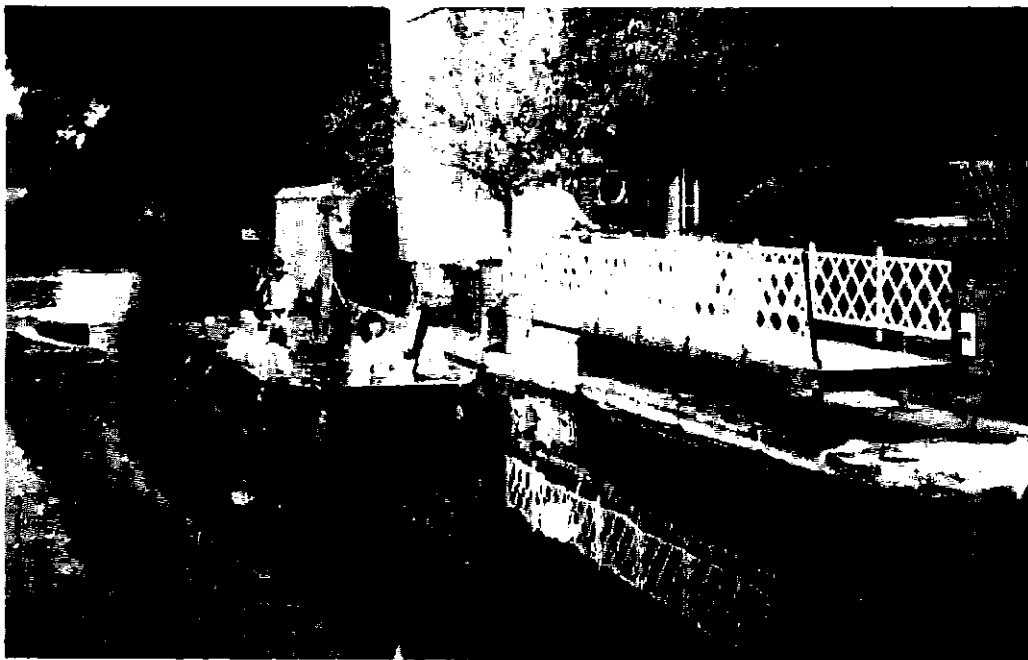
who were at its original formation. The wide measure of autonomy allowed us by the Trust Council is a compliment to our success - but these are no grounds for complacency. Perhaps the stability of our Committee is a measure of the confidence of the Trust membership; it would be nice to think so, better that than complacency or indifference!

Certainly there is no complacency in the Committee at this state of affairs; we have no desire to be, or appear (as our Treasurer so ably expressed it) "a self perpetuating Oligarchy". The only true measure of our success will show in the increasing support of Trust members. We need your help, ideas and a little of your time to continue and expand on our achievements.

TONY JONES



Reflections at Ryeford. Another boat load passes under the bridge.



Sorry, but it's hard to resist just one more photo of the Ryeford Trip Boat and swing bridge (Above). How about helping the crew next year? Or you could man the Sales stand pictured below at Stroud Show.



A.G.M.

NOTICE OF ANNUAL GENERAL MEETING

NOTICE IS HEREBY GIVEN OF THE 12TH ANNUAL GENERAL MEETING OF THE STROUDWATER - THAMES & SEVERN CANAL TRUST LIMITED, TO BE HELD IN THE THREADNEEDLE ROOM, THE SUBSCRIPTION ROOMS, STROUD, AT 3.00pm ON SATURDAY 21st NOVEMBER 1987.

The business to be transacted at the Meeting shall be as follows:-

1. To receive the Minutes for the 11th Annual General Meeting.
2. To receive the report of the Council.
3. To receive the Accounts and the Auditor's Report.
4. To fix the remuneration of the Auditors.
5. Discussion of Future Trust Activities.
6. To elect Members of the Council.
7. Any Other Business.

DAVID H. BOAKES, CEng, MIMechE,
SECRETARY TO THE TRUST.

The Meeting will be followed at 4.00pm by an illustrated talk, "The Severn Navigation" by F.W. Rowbotham Esq.

NOTES

1. Notice of intending proposals for membership of the Trust Council must be forwarded to the Secretary in writing not less than 14 clear days, i.e. to arrive by 3.00pm Friday 6th November 1987, before the date of the meeting, together with the agreement in writing of the person proposed. Application forms are obtainable from the Secretary at the Trust's Registered Office, 1 Riveredge, Framilode, Gloucestershire, GL2 7LJ.
2. Voting Rights - All classes of Membership, except Junior Membership, confer one vote. Junior Members have no voting rights since such members cannot be held liable under the Trust's guarantee.
3. Any members entitled to be present and to vote at the Meeting may appoint a proxy, who must be a voting Member of the Trust. The instrument appointing a proxy shall be in writing and shall be deposited at the Trust's Registered Office at 1 Riveredge, Framilode, Glos., GL2 7LH, not less than 48 hours before the time of the meeting.
4. Legally correct proxy forms may be obtained from the Trust's Registered Office at 1 Riveredge, Framilode, Glos., GL2 7LH.

Council Members' Report

11

STROUDWATER - THAMES & SEVERN CANAL TRUST LIMITED. COUNCIL MEMBERS' REPORT FOR THE YEAR ENDED 31st MARCH 1987.

The Council submit their twelfth Annual Report to the Members of the Stroudwater - Thames & Severn Canal Trust Limited, together with the Audited Accounts for the year ended 31st March 1987.

COUNCIL MEMBERS

The following have served as Members of the Trust Council during the past financial year:-

RICHARD ATTWOOD (co-opted 9th April 1986), DOUGLAS BLAKE, KENNETH BURGIN, ANNE GARFITT, JOHN GARFITT, MICHAEL GLEN, BRUCE HALL, NICHOLAS MELCHIOR, MICHAEL REYNOLDS, ROBIN TWINING (resigned 20th August 1986) ALEC WHITEHOUSE, DAVID BOAKES (Secretary/Manager).

The Registered Office of the Trust remains at 1 Riveredge, Framilode, Gloucestershire.

REVIEW OF THE TRUST AND PRINCIPAL ACTIVITIES

The principal activity of the Trust has continued to be the restoration of both the Stroudwater Navigation and the Thames & Severn Canal. The Council has continued to remunerate the Secretary at a salary commensurate with his duties, apart from which there have been no contracts in which any Council Member had a personal interest. As Sponsors, the Trust has employed eleven persons on an M.S.C. Community Project increasing to thirty persons from September 1986. A Secretarial Assistant has continued to be employed on a part-time basis to assist the Secretary/Manager in his duties.

FIXED ASSETS

The Trust's dredging equipment was rebuilt during the year which has considerably enhanced its efficiency and resale value. There are no charges outstanding over the Assets of the Trust such as would require registration under the Companies Act.

CURRENT ACTIVITY

Trust fund raising locally, particularly by the Western Branch, has been encouraging this year, although there has still been some difficulty in obtaining grants from the national grant making Trusts.

Whilst Local Authority funding was again disappointing, Stroud District Council have allocated up to £8,000 from next year's (1987/8) budget. This sum has been matched by the Company of Proprietors of the Stroudwater Navigation.

Increased numbers and refurbished equipment have produced positive benefits for the 1986/7 M.S.C. Scheme. Ryeford Basin has been completely dredged and a group of employees were trained in

bricklaying, and have commenced structural works in the Newtown area. Our Scheme has been maintained at a high level of filled places.

The Western Branch have continued with their clearance work and trip boat construction, from which we are beginning to gain benefits. Thames End Branch continues to work at Cerney Wick with towpath improvement in the area.

We are particularly pleased with the increasing use of the canals, both by human and wildlife visitors.

The Trust has continued to receive financial support from the Company of Proprietors of the Stroudwater Navigation, together with increasing moral support from their Board. The Inland Waterways Association, both at local and national level, have assisted the Trust with major financial contributions.

We have continued to encourage the use of the waterways for recreational purposes, but the construction of the Stroud East/West Bypass has curtailed our activities in the Wallbridge area. Discussions continue with regard to the Trust's proposed canal diversion and marina at Wallbridge.

FUTURE DEVELOPMENTS

Our current restoration is now reaching the point that we can commence restoration in logical sequence. It is your Trust Council's intention to concentrate our efforts between Pike Lock and Bonds Mill initially, to provide a short navigable section of water, and should funding and manpower be available, to rebuild Wallbridge Upper Lock and commence work on the lock chambers up to and including Ham Mills in that area.

The Trust will continue to safeguard the remainder of the canal route for eventual through navigation, and to promote the fullest public amenity use of these as yet unnavigable sections.

The Trust Council looks forward in 1987/8 to continued increasing progress with the support of the Trust membership and other friends of the canals.

DAVID H BOAKES, SECRETARY/MANAGER.

EDITOR'S NOTE: Please note that the new address for your copy is 48A Stondon Park, Forest Hill, London SE23 1JZ., and that the new copy dates are printed on page 1.
--

Raft Race 87

To quote an old chestnut, Summer fell on a Sunday this year, and by good fortune it coincided with the Raft Race. Held for the first time on the Ryeford pound, it attracted nine entries and a large crowd of spectators. The weather was perfect with brilliant sunshine making it a very enjoyable day.

An innovation was the inclusion of obstacles such as a suspended tyre through which one of the crew had to pass and markers around which the rafts had to be steered. This gave every crew a chance to win rather than relying solely on the time taken. Needless to say, several crew members fell in the water, with one raft putting up a passable performance of a submarine before the start!

Certain of the spectators entered into the spirit of the event by jumping into the canal and swimming the course. Others, with great displays of bravado, leapt from the parapet of the skew bridge, seeming not to mind the black silt they stirred up.

Prizes were awarded for best raft, best dressed crew and best constructed raft as well as for the fastest. The Clothiers Arms Trophy went to the Amazons, an all female crew, for putting up what the judges considered to be the best overall performance. Other prizes of beer and wine were generously donated by Uley Brewery and the landlord of the Clothiers Arms, Luciano Magalotti, who captained one of the rafts.

Appreciation was expressed for the efforts of those who organised the event, in particular Clint Taylor. It is hoped to subsequently build on this year's success with more entries and other events to make it an all day occasion.

BERNARD DONOVAN



Members' Day

The Trust held a Member's Day for local members on Saturday 26th September at the Ryeford Hotel near Stonehouse. Fifty members and friends attended a slide show and talk where they were updated on progress made in restoration of the two canals.

In a slide show and talk by David Boakes, the remarkable progress made in rebuilding Newtown Lock by the Trust's own Manpower Services Community Project was explained. It is planned that both this lock and nearby Blunder Lock will be completed, ready for gating, by the end of 1987.

The members were also appraised of the plans to construct a marina and new bypass canal around the section in Stroud which has been destroyed by the east-west road bypass.

The slide show was followed by a complimentary boat trip along the canal at Ryeford where the Trust's dredger, tug and barges were inspected and the progress made in dredging, what was reed swamp until four years ago, favourably commented upon. However, the damage caused to Ryeford Double Lock by the recent burst water main was observed with sorrow.

The general opinion was that the work carried out at Ryeford had considerably improved the environment and enhanced the habitat for wildlife. Members who had taken trip boat rides in recent weeks commented that a family of swans with nine cygnets often swam in convoy with the trip boat.

The enjoyable day concluded with a brief summary of forthcoming events in which members could participate.

RICHARD ATTWOOD

It is proposed that commencing 3rd January 1988, there will be a Members' Sunday Afternoon Walk on the first Sunday of each month. All members and friends are most welcome to meet at 2.00pm for a gentle meander lasting until about 3.30pm. Please come prepared with "sensible" shoes etc. The first three walks will start from the following points:-

3 January	Daneway Inn Car Park, Sapperton.
7 February	Blunder Lock, Eastington.
6 March	Visitor's Centre, Spine Road, Cotswold Water Park.

Please ring Brimscombe 885057 if further details are required.



The swans lead the way in what seems to be their favourite pastime - guiding the trip boats up and down the Ryeford pound.

Membership Matters

As reported in the last edition of the Trow David Jordan has handed the task of Membership Secretary to me (Richard Attwood). David ran the membership section for seven years, which is no mean achievement. I wonder if I will survive for that long!!

One of my first tasks has been to make an analysis of where you - the members - all live as shown in this table:-

1. Nailsworth, Horsley, Amberley, Minchinhampton.	No. of members	23
2. West of M5, Kings Stanley, Leonard Stanley.		14
3. Stonehouse.		10
4. West of Stroud, Painswick.		19
5. Stroud Centre.		36
6. East of Stroud.		32
7. Dursley, Uley, Wotton-Under-Edge, Tetbury.		19
8. Gloucester, Cheltenham, Tewkesbury.		48
9. Cirencester.		20
10. Swindon, Highworth, Cricklade.		27
11. Bristol, Bath, Chippenham.		37
12. London, S.E., East Anglia.		99
13. South of Canal.		61
14. North of Canal, Wales, Scotland, Ireland.		66
15. Foreign.		6
	TOTAL	<u>517</u>

The membership numbers for each area show that about half of the members live "near" the canals. They also show that certain areas such as Stonehouse, have very few members. However, this should not be a problem in the future - people of Stonehouse beware!

Since I became Membership Secretary we have had seven new members and I would like to welcome to the Canal Trust:-

N. Falk	London.
D. A. Attwood	Dursley.
J. H. Ferris	Stonehouse.
D. Ffoulkes	Tetbury.
R. Woodward	Cheltenham.
M & S Calder	East Malling, Kent.
Leighton Buzzard Canal Society.	

At one time there were 750 members and my aim is to exceed that figure as fast as possible. To begin with we - that is myself and you the

members - should be aiming at 600 members by next Summer, and to achieve this I must have your help in recruiting more members.

On the 1st May 1988 - which is the copy date for the Summer Trow - all members who have recruited 5 NEW MEMBERS will receive ONE YEARS FREE membership and members who recruit 25 NEW MEMBERS will receive FREE LIFE MEMBERSHIP.

In order to keep a record, the recruiting member should write their name and address at the top of the membership form and additionally each new member should have completed the Banker's Order Form.
GOOD HUNTING!

RICHARD ATTWOOD

Letters to the Editor

Dear Sir,

I would like to support most heartily your correspondent Judy Bond, who thinks a short name would be an advantage. "Stroudwater - Thames and Severn Canal Trust Limited" may be historically significant and cause deep emotion in the breasts of our founding fathers, but when you are trying to sell us to mildly interested parties, they are apt to get a glazed look and decide to stay with the "Kennet & Avon".

I did actually try to interest the Trust Council in this idea of a short name during my brief period as a member of that august body, but it is alleged to cost one or two hundred pounds to deal with the legal aspects. They tended of course to be up to their knees in alligators and not able to appreciate that a short name might lead to enough money for a bigger pump. I still think it's a good idea.

DERYCK WATKINSON Meysey Hampton, Cirencester, Glos.

Function Room

Garden

Red Lion Inn

Brian & Mo Boulton

High Street, CRICKLADE. Swindon. SN6 6DD

Tel: Swindon 750776

Skittle Alley

R.A.O.B. 8875

Sponsored Walk

The 1988 Sponsored Walk will take place on Sunday 22 May and will have long (15 miles) and short distance routes and starts on Frampton on Severn village green.

Using Public Footpaths, the merry band of walkers will cross the fields and join the towpath of the Stroudwater Canal at the site of the now vanished Lockham Bridge. The walk will then proceed along the towpath to Saul Junction where the faint-hearted can take a short-cut to complete a seven mile walk. Those with more energy will follow Public Footpaths along the banks of the long since derelict part of the Stroudwater, past the regretfully now closed Drum & Monkey pub and across the fields to Saul village where a short walk along Moor Lane brings them once more to the towpath, the Ship Inn and the River Severn.

The walk will follow the river bank for one and a half miles past the Darrell Arms before taking, once more, to the fields past Wick Court and over Barrow Hill where there is a magnificent view of the Horseshoe Bend.

Regaining the road at Fretherne Church, the walk proceeds to Frampton Swing Bridge where the long and short walks re-join. Unfortunately for those who drink cider, the walk does not cross the bridge to the cider factory(!) but follows the towpath of the Gloucester and Sharpness Canal to Splatt Bridge. Crossing Splatt Bridge the route passes through Frampton village to the start.

The route described will be subject to permission being granted, where required, from the relevant authorities.

The number of walkers on the Trust Sponsored Walk has decreased in recent years from the hundreds who walked in the seventies to raise funds for the restoration of our canals. Let us make 1988 the year when more people took part on the Sponsored Walk than in any other year.

Sponsorship forms will be available in March.

Xmas Puds

MAGGIE'S CHRISTMAS PUDS! Home-made with brandy for flavour. Pure, Wholesome and Delicious! ALL PROFITS TO THE CANAL TRUST. TO BE COLLECTED FROM BLUNDER LOCK (Regret no postal deliveries possible)

SIZES: 1 lb - £1.60 1½ lb - £2.40 2 lb - £3.20 Brandy Butter
also available
ORDERS TO MARGARET BOAKES PLEASE ON Gloucester 740525. 50p

Sales

The following items are available by post from me at 7 Hidcote Close, Eastcombe, Stroud, Glos., GL6 7EF. Please add 40p per order under £20 to help towards packing and postal charges. Cheques and postal orders should be made payable to "S-T&S CT Ltd"

Trust Notelets (8 with envelopes) - Canal views	£0.60
A Canal Walk Through Stroud (Selling fast)	£1.25
Trust Key Fobs	£0.40
Trust Comb-in Case	£0.30
Trust Bookmarks	£0.45
The Stroudwater Canal (Handford)	£7.00
The Thames & Severn Canal (Household)	£6.95

IDEAL BOOKS FOR CHRISTMAS PRESENTS

World Canals (Hadfield)	£16.00
Bread Upon the Waters (Blagrove)	£8.00
The Changing River (Burton)	£7.00
Village Heritage (Miss Pinnell & Sapperton school children)	£10.95

All orders for more than £10 will receive a FREE apron!!!

Now that I have taken on the post of Membership Secretary, I do not have enough time or energy to run the Sales section single handed. If there is anyone, preferably in the Stroud/Stonehouse/Cirencester area who is prepared to help at the local or waterways shows, look after the sales stock, or even run the entire operation (please!!) contact me as soon as possible.

When the Sales Stand is at local and national shows, we have a small tent of the type used as an extension to a Dormobile in which to house our stock. The sales tables and stock on display have to brave the elements, of which there have been plenty this past year!!

What the Trust ideally needs is a large frame tent with a roll-up front so that the entire sales area and sales persons can be under cover.

If any member has such a tent which they would sell or give to the Trust, then I would like to hear from them. Needless to say, funds are very restricted for the purchase of such items, but I believe that our sales effort would be considerably enhanced by such a purchase.

Of course, if someone out there has a caravan with large tent-like awning and wants to be a Sales Manager, then I'll put the champers on ice immediately!!!

Dates for your Diary

REMEMBER, REMEMBER, 21st NOVEMBER! - HAVE A SATURDAY AFTERNOON OUT.

2.30pm Annual Walk Awards Free entry to Trust Members
 3.00pm A. G. M.
 4.00pm THE SEVERN NAVIGATION. An illustrated talk by F. W. Rowbatham, to be held at
 - the acknowledged expert. The Threadneedle Room, Stroud
 Subscription Rooms.

WESTERN BRANCH MEETINGS are held on the first Monday of each month from 7.00pm in the lounge bar of the "Bell" at Wallbridge in Stroud. All members, friends and other interested parties are most welcome.

WESTERN BRANCH "NOGGIN & NATTER" SOCIAL EVENINGS also at the "Bell" on the third Thursday of each month from 7.30pm. A free buffet is provided - everyone is welcome. Past attractions have been slide shows, barbecues and boat trips.

THAMES END BRANCH MEETINGS are held on the second Tuesday of the month from 8.00pm at the "Red Lion" at Cricklade. Why not come to a meeting to see what we are doing.

THAMES END WORK PARTY is centred on Cerney Wick Lock where we would be pleased to see new faces on the last weekend of the month.

WESTERN BRANCH VOLUNTEERS are involved in practical work and trip boat operation. Please ring to find out what's happening.

The Clothiers Arms

Free House

1 Bath Road . Stroud . Gloucestershire

Resident Proprietors

Luciano & Aline Magalotti

Telephone Stroud [04536] 3801



FRONT COVER: The Amazons set sail for Raft Race '87.

BACK COVER : The view of our canal from the Thames at Inglesham.

Who's Who in the S. T.&S. C. T. Ltd.

DEPARTMENTAL HEADS

ARCHIVIST	DAVID J VINER B.A. A.M.A. 8 Tower St., Cirencester, Gos., GL7 1EF
MEMBERSHIP SECRETARY	RICHARD ATTWOOD. 7 Hidcote Close, Eastcombe, Stroud, Gos., GL6 7EF (Brimscombe 885057)
PRESS & PUBLICITY	BRUCE HALL. Springers, Watledge, Nailsworth, Gos., (Nailsworth 2384)
SALES MANAGER	RICHARD ATTWOOD. 7 Hidcote Close, Eastcombe, Stroud, Gos., GL6 7EF (Brimscombe 885057)

THAMES END BRANCH

CHAIRMAN	VACANT Please contact the Secretary or Treasurer if you would like to volunteer for this post.
SECRETARY	DERYCK WATKINSON. 12 Hampton Grove, Meysey Hampton, Cirencester, Gos., GL7 5JN. (Poulton 661)
TREASURER	NICHOLAS MELCHIOR. 28 Grove Hill, Highworth, Swindon, Wilts., SN6 7JN. (Swindon 762510)

WESTERN BRANCH

CHAIRMAN	BERNARD DONOVAN. 10 Mount Pleasant, Bisley Old Rd., Stroud, Gos., GL5 1NA (Stroud 77541)
SECRETARY	TONY JONES. 7 Stringers Close, Rodborough, Stroud, Gos., GL5 3RB. (Stroud 2915)
TREASURER	ALEC WHITEHOUSE. 37 Cotswold Green, Stonehouse, Gos., GL10 2ET. (Stonehouse 2284)

WORKING PARTIES

WESTERN BRANCH	DOUG BLAKE. 19 Stratton Road, Gloucester. (Gloucester 415843)
THAMES END BRANCH	NICHOLAS MELCHIOR. 28 Grove Hill, Highworth, Swindon, Wilts., SN6 7JN (Swindon 762510)

THE TROW TEAM

EDITOR	DAVID JOWETT. 48A Stondon Park, Forest Hill, London SE23
DISTRIBUTION TEAM	PHIL GRIFFITHS. 10 Smythe House, The Waterloo, Cirencester, Gos., GL7 7JN (Ciren. 4160)
	DES PINNOCK. 7 Vicarage Close, Churchdown, Gloucester, GL3 2NE (Churchdown 856233)

