

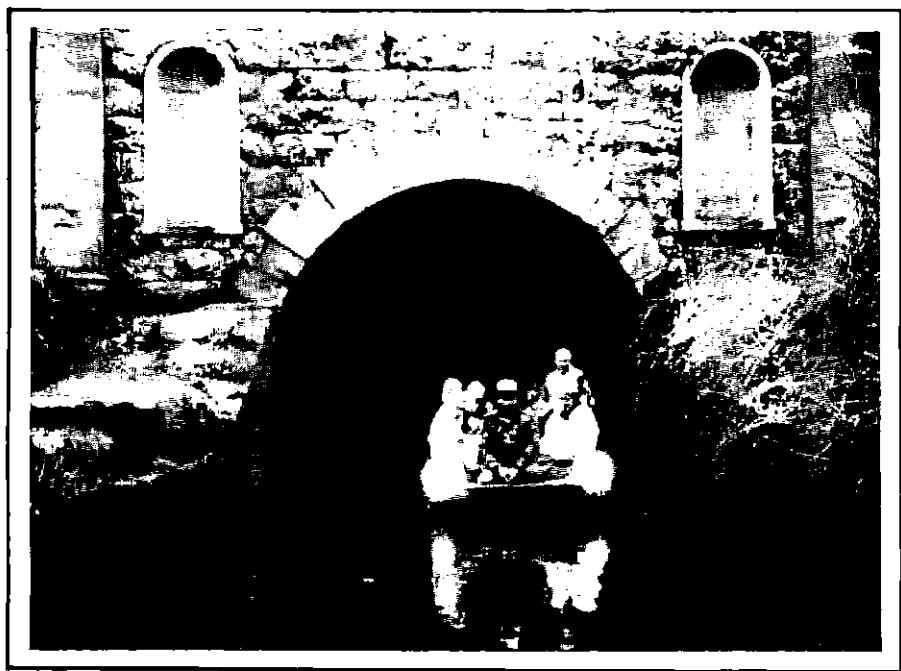
Stroudwater Thames & Severn Canal Trust Ltd.

TROW



Number 65

Summer 1989



The Official Magazine for Members and Friends
working to restore the Cotswold Canals

30p

Contents

THE VIEWS & OPINIONS IN THIS MAGAZINE DO NOT NECESSARILY REPRESENT VIEWS & OPINIONS OF THE STROUDWATER, THAMES & SEVERN CANAL TRUST LTD.

COPY DATES

SPRING 30th JANUARY
 SUMMER 30th APRIL
 AUTUMN 30th JULY
 WINTER 30th OCTOBER

Secretary's Report	2
Thames End Branch	3
Western Branch	4
What is WRG?	5
Canal Camps	6
Bicentenary Dates	8
Trip Boating 89	9
Mechanisation Speeds Restoration?	10
Members' Walk	11
Membership Matters	12
Sales	13
Letters to the Editor	14
Dates for Your Diary	16

Published by the Stroudwater, Thames & Severn Canal Trust Limited a Registered Charity, at 1 Riveredge, Framilode, Glos., GL2 7LH
 Compilation and Layout by David Jowett
 Printed by Earle & Ludlow, 77 Victoria Road, Cirencester, Glos.

Pictorial

Pictured two years ago, David Boakes stands at the rear of the Bowbridge Trip Boat. David would often turn up and couldn't resist giving the passengers the benefit of his informed commentary.



Secretary's Report

David's untimely death has left a gap in the canal world which will be very difficult to fill. Frequently outspoken and controversial, he dedicated almost all his time and energy to canal matters. Many of his achievements are remarkable - not least is that had it not been for him, our Trust would probably not exist. Those of us picking up the threads are now realising just how hard he worked for the Trust, and how easy it is to criticise without appreciating the difficulties of a job.

How our loss will affect the future is not yet clear, but in the meantime I have agreed to undertake the awesome responsibility of the post of Secretary, in an honorary capacity, mainly so that the Trust complies with the law. I see the position as titular rather than executive but I suspect my Council colleagues would take a different view, if I let them. In fairness, our Chairman has promised me a new quill pen, sole charge of the Trust penknife and a key to the executive suite.

To find anyone who will replace David will, I think, be an impossible task. His personal knowledge and experience of the Cotswold Canals are irreplaceable and it is inevitable, therefore, that changes will occur. The ironic thing is that not only have we lost a key figure, but he, himself, will miss seeing so many of his efforts about to reach fruition. We are now poised to make significant progress in the restoration programme, with commercial enterprises taking an interest and offering support. If the sad loss of David creates the sympathy and empathy to give the additional thrust we need then it will be some consolation.

It is the wish of David's wife, Margaret, that a memorial will be set up to perpetuate his memory. It is thought unlikely that he would appreciate anything so mundane as a seat or a set of lock gates, so the Trust will welcome suggestions as to what form the memorial will take. Please submit any ideas to me and I will pass them on to Margaret for consideration. Donations will be welcomed and acknowledged.

Although I have said that my position as Honorary Secretary is non-executive, there are considerable responsibilities attached and these are undertaken with some apprehension and not at all lightly. It is gratifying that I can rely on the Trust Council and other members for support and guidance.

In passing, we were moving a filing cabinet from Framilode and I raised the question as to how it was that I had the heavy end, walking backwards upstairs. Our Membership Secretary (and amiable Moloch) replied that it was probably in much the same way that I became Secretary. Would someone please explain?

BERNARD DONOVAN

Hon. Secretary.

David Boakes

We were all saddened on hearing the news about our Secretary, David Boakes who died in March. The Spring Trow was already with the printers when news came through, but members should have received a brief insert with their copy.

In this Trow, contributors have written about their own thoughts at this time and the next issue will contain a full obituary.

I can only echo the sentiments expressed by those other contributors and draw your attention to the proposed memorial described by Bernard Donovan in his report on page 2.

DAVID JOWETT

Thames End Branch

Business has continued pretty well as usual since our last report, apart from the sadness and disbelief caused by the untimely death of David Boakes. Like most people, we were accustomed to David ignoring ill-health and unprepared for the possibility that he might not always win. Our sympathy and support go to Margaret Boakes and the other members of the family at this time.

Boat trips into Sapperton Tunnel have finally begun and are showing every sign of attracting useful interest, as well as being a source of income. The first session was specially organised for the benefit of local members of the River Thames Society. It is the custom of the Society to hold an annual walk, usually somewhere along the Thames, and it was arranged this year that the walkers would finish up at the Tunnel House Inn and be taken into the tunnel.

The essential pre-condition for such an event is that the flow of water into the tunnel should exceed leakage out of it, and we were fortunate in having rotten weather at the right time. The occasion was enjoyed by our guests and by the helpers, and the experience gained enabled us to run trips very successfully for members of the public the following weekend.

It is hoped to repeat the operation on as many weekends as possible, but this depends not only on the water level but on a great deal of effort by the Western Branch. Our appeal for local helpers still stands and a call to any Officer will get you in touch with the organisers.

DERYCK WATKINSON

Stop Press

I am pleased to report that Roger Knapman, M.P. for Stroud has kindly accepted a position with the Trust as Honary Vice-President. I will give more details in the Autumn Trow.

- BERNARD DONOVAN.



four sites and single week camps are held at New Year and Easter for the dedicated! The camps offer an opportunity to achieve a vast amount of work in a short time. A recent summer camp on the Huddersfield Canal cleared a lock in a fortnight, compared with a time of eighteen months of weekend work to clear a similar one!

Although it must be appreciated that there are limitations to what these unpaid workers can do, most restoration work is well suited to this pool of free labour. Today, it is often the volunteer, raising his own funds and paying his own expenses who leads where others will later follow. Government temporary employment schemes, coupled with a greater awareness of the contribution which clean, working waterways can make to the environment, have led to many local authority schemes for the improvement and restoration of waterways in their area. It is fair to say however, that none of these schemes would have begun without pressure from volunteers, and volunteers still contribute expertise and labour to most of them.

Today, legislation on safety, working practices, VAT etc, together with some resistance to voluntary work on the part of the Trades Unions have combined to change beyond recognition or recall the world into which WRG was born. Waterway Recovery Group has evolved throughout its existence and will continue to provide powerful leadership in the sphere of waterways restoration.

- NEIL EDWARDS

Canal Camps

We are pleased to report that two Canal Camps are planned for our canals during the Summer - one organised by WRG and the other "unofficial".

The Waterways Restoration Group (WRG - pronounced "Werg") have organised three camps near Eastington which overlap during a two week period from 22 July to 5th August. It is intended that Dock Lock will be cleared of its concrete capping and tons of assorted rubble together with the short pound below adjoining our spillweir worksite. If you are interested in joining one of these WRG-organised camps for an outlay of only £18 per week, we can put you in touch. Please ring Ken Bailey on 0272 601710. Ring the same number if you can't make the camp but wish to offer more limited support.

An "unofficial" camp has been organised by Bob Cutler which was briefly mentioned in the last Trow. Wilmoreway Lower Lock is the site with repairs to brickwork being the target. A bypass weir will also be repaired. Bob has organised free accommodation and a range of evening activities to include boat trips on the Thames and into Sapperton Tunnel, if water levels allow (knowing our Summers, they probably will)! Please ring Bob on 01 578 4029 or write to him at 41 Ellesmere Road, Greenford, Middlesex, UB6 9ET. The Camp runs for a week from 26 August.

OPPOSITE ABOVE: Dock Lock and the pound below awaiting the WRG!

OPPOSITE BELOW: Wilmoreway Lower Lock ready and waiting for Bob Cutler & Co.



Bicentenary Dates

This Bi-Centenary year promises to be our busiest yet. Special events have been arranged and are listed here. Please give your support. Why not contact the organisers if you are able to assist, but in any case we hope to see more members out and about during the remaining months of the year. Full names and addresses at the back of the Trow.

- Saturday 24 June. TRIP TO CROFTON Includes transport from Stroud, a Canal Trip and entrance to Crofton Pumping Station on a steaming day. Tickets in advance £6 from Jeffrey Shaw.
- Saturday/Sunday 2/3 September SPONSORED WALK - SAUL JUNCTION - INGLESHAM Chris Jones, David & Don Bayliss will walk the entire route with others walking part only. Sponsorship form appears in the centre pages. Please help! Contact Bernard Donovan.
- Sunday 17th September. RAFT RACE DAY A day organised around our Annual Raft Race at WALLBRIDGE, STROUD to include a Car Boot Sale, Supporting Events and Stands including Refreshments. Lucky Programme 50p. Contact Richard Attwood.
- Saturday 14 October. BI-CENTENARY CELEBRATION at TUNNEL HOUSE, COATES. Ox Roast £5.50 per head. Boat trips into Sapperton Tunnel (water levels permitting). Folk singers. Morris Dancers etc. Contact Bernard Donovan.
- Friday 17th November. BI-CENTENARY DINNER at Cirencester. with Distinguished Guest of Honour and Speaker. Limited tickets in advance £12 - £15 per head excl. wine. Contact Bernard Donovan.
- Sunday 19 November. BI-CENTENARY CELEBRATIONS to mark the passage of the first boat (18/19 Nov 1789) from Severn to Thames. Celebrations at the TUNNEL HOUSE, COATES to be attended by dignitaries and include various entertainments and boat trips. Contact Bernard Donovan.

In addition to the above, don't forget our usual programme. The Western Branch holds a monthly "Noggin & Natter" for members and friends on the third Thursday of each month. In addition they hold Branch Meetings on the first Monday of each month (at the King & Castle near Brimscombe, at present). The Thames End Branch also hold meetings at the Red Lion in Cricklade on the second Tuesday of each month. Members and friends of the Trust are most welcome - why not give them a ring (see back of Trow).

This year the Trust will also be represented at the following events:-

- Sat 3 Jun. NEWBURY WATERWAYS WEEKEND - NEWBURY WHARF.
 Sun 11 Jun. WILTS & BERKS EVENT - CALNE.
 26/27/28 Aug. IWA. NATIONAL RALLY, WALTHAM ABBEY.
 Sun 10 Sep. STONEHOUSE STEAM RALLY.

and finally the Trust will be entering a float and Sales Stand at STROUD SHOW to be held on Saturday 15th July. See you there!

Trip Boating 89

In January the Gloucestershire Branch of the Inland Waterways Association presented the Trust with an electric outboard motor to enable pollution-free boat trips to be run into Sapperton Tunnel. The Thames End Branch Report describes our progress in more detail. Ownership of this most welcome gift produced a problem as the motor needs a heavy duty battery to drive it.

Through an active member of the Trust, however, an approach was made to David Brown, Managing Director of Hawker Siddeley Power Plant in Thrupp, to see if he could advise on the best type to use. Hawker Siddeley came up trumps by presenting the Trust with not one, but two enormous batteries, each of which will drive the motor all day.

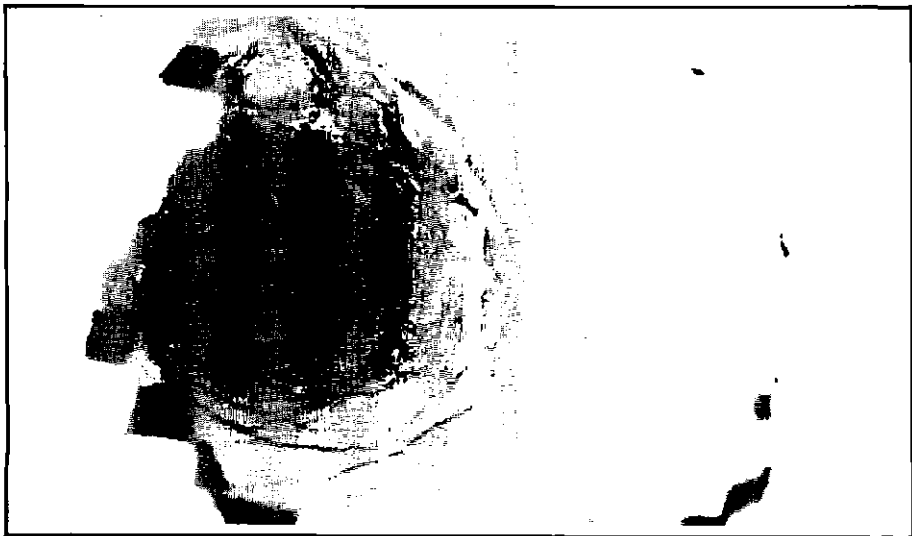
The Trust is very appreciative of the gift and trips will be run throughout the year, subject to water levels being maintained, from the Tunnel House, Coates starting at 1.00pm on Sundays.

The breach in the Wallbridge pound (see separate report) delayed boat trips at this popular spot. However, we hope that trips will be under way by the time you read this. Please watch the local press for details.

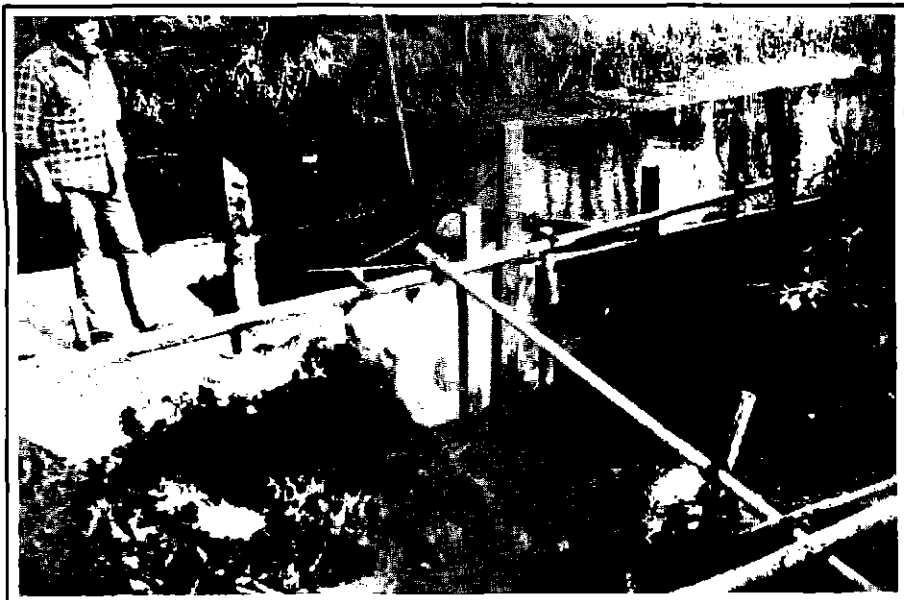
It has become apparent that the Trust now needs a Trip Boat Manager to lighten the load on other Trust volunteers who are already heavily committed. Please consider if you can help. The job would not take too much of your time - the main task would be to organise a crew rota (which may or may not include yourself). If you can assist please ring me on Stroud 2915.

TONY JONES

One of the tunnel shafts
photographed from the tunnel!



Mechanisation Speeds Restoration?



Following the recent breach of the Wallbridge pound by the small aqueduct, Gloucestershire County Council brought in a mini-digger to help with repairs. Unfortunately, as a result of torrential rain, it slid off the embankment into the canal. It shifted not a solitary scoop of mud, unlike our own Tony Jones who soldiered on valiantly.

When I visited the site he was up to his knees in the stuff as happy as if it were clover, with the two Council workmen humping sandbags as if the second Flood was coming. Between them they achieved what the machine failed to do.

Well done Tony Jones and unknown workmen!

-BERNARD DONOVAN

Function Room
Garden

Red Lion Inn

Skittle Alley
R.A.O.B. 8875

Brian & Mo Boulton

High Street, CRICKLADE, Swindon. SN6 6DD

Tel: Swindon 750776



Tony Jones examines the breach at Wallbridge (Opposite) and gets stuck in (above) whilst the mini-digger lies idle!

Members' Walk

1989 is going to be a long, hot summer and I am therefore encouraged to organise a further series of walks. Full details appear below together with Ordnance Survey Reference Numbers.

- June 4th NUTSHELL BRIDGE & THE OCEAN. (05162/801052). Meet in the lane to Nutshell Bridge and Church, next to Stonehouse Court Hotel.
- July 2nd THE GOLDEN VALLEY. (05162/938035). Meet at Daneway Inn.
- August 6th ABOVE THE TUNNEL. (05162/965006). Meet at Tunnel House pub. near Coates.
- September 3rd THE EAST/WEST BYPASS. (05162/849051). Meet outside the Bell Hotel at Wallbridge.

The walks will be gentle meanders starting at 3.00 pm. and lasting for about 1½ hours. This year there will be a charge of £1 per adult, each of which will receive a free postcard.

Membership Matters

This quarter we are pleased to welcome the following new members:-

Mr. P. Munns, Stroud.	D. Hunt, Reading.
B. P. James, Eastington.	Mrs. P. Westall, Coates.
Mr. P. McDermott, U.S.A.	Miss J. Skinner, Chalford.
Mr. J. R. Hathaway, U.S.A.	Mr. A. R. Burton, Nailsworth.
Mr. J. Abell, Brimscombe.	Mr. P. A. Smith, Hatfield.

Look out for the new publicity/membership leaflets which will soon be appearing in pubs, hotels, museums and shops around the Cotswold Canals.

RICHARD ATTWOOD

MEMBERSHIP FORM

Please enter details on dotted lines

To: THE MEMBERSHIP SECRETARY,
7 HIDCOTE CLOSE, EASTCOMBE, STROUD, GLOS., GL6 7EF

I would like to become a member of the "Stroudwater - Thames & Severn Canal Trust Ltd" and I enclose my subscription for the first year.

NAME IN FULL..... BLOCK
ADDRESS..... CAPITALS
..... PLEASE

.....POST CODE.....

TEL. NO..... SIGNED

OCCUPATION.....

AGE (if under 18)..... DATED.....

RATES: Adult £8. Family £10. Pensioner £5. Youth (under 18) £2.
Affiliation (Schools, Clubs etc.) £10. Life £200.

Stroudwater Cottage

Available for Weekends
Midweek Breaks Longer Lets

Very Well Appointed
Sleeps 4/5



Close to the Canal near Stonehouse

Telephone 0455 611508
for details

Please mention the Trow when enquiring about a booking. The owner will make a donation to the Trust for every booking received as a result of this advert.

Sales

JUST ARRIVED!! NEW FOR 1989.

BI-CENTENARY CLOTHING....

* Acrylic Sweaters	£14.00	* Cotton/Acrylic Sweat Shirts	£13.00
* Trust Ties	£6.50	* Cotton Tennis/Sports Shirts	£12.00

All these items are of the highest quality and are embroidered with a small multi-colour Trust Bi-Centenary logo. This range will be very much a limited edition and only on sale in this form during this, the Bi-Centenary year.

Sizes : 36" - 48" Chest.

Colour: Black, Navy Blue, Royal Blue, Sky Blue, Light Grey, Bottle Green

Please state size and colour when ordering.

BEST SELLERS....

The Canal Canoe Trip (Jones & Loxon)	£1.00
Towpath Guide (Handford & Viner 2nd Edition)	£6.50
Canal Walk Sheets (Set of 5)	£1.00
A Canal Walk Through Stroud	£1.25
Canal Boat Cookery (Bryce)	£0.40
Old Thames Valley Recipes (Poulbon)	£1.10
Stroud As It Was (Tucker)	£2.15
The S T & S In Old Photographs (Cuss & Gardiner SIGNED COPIES)	£6.50

These items are available by post from me at THE COURTS, 27 WALTON ROAD, CLEVEDON, AVON, BS21 6AE. Please add 50p per order (if under £20) to help towards postage and packing charges. Cheques and Postal Orders to be made payable to "S, T&S. C. T. Ltd."

Don't forget the "NEW" list of all products on sale via the Trust which is available from me on request.

- CHRIS JONES

The Clothiers Arms

1 Bath Road . Stroud . Gloucestershire

Resident Proprietors

Luciano & Aline Magalotti

Telephone Stroud [04536] 3801

Free House

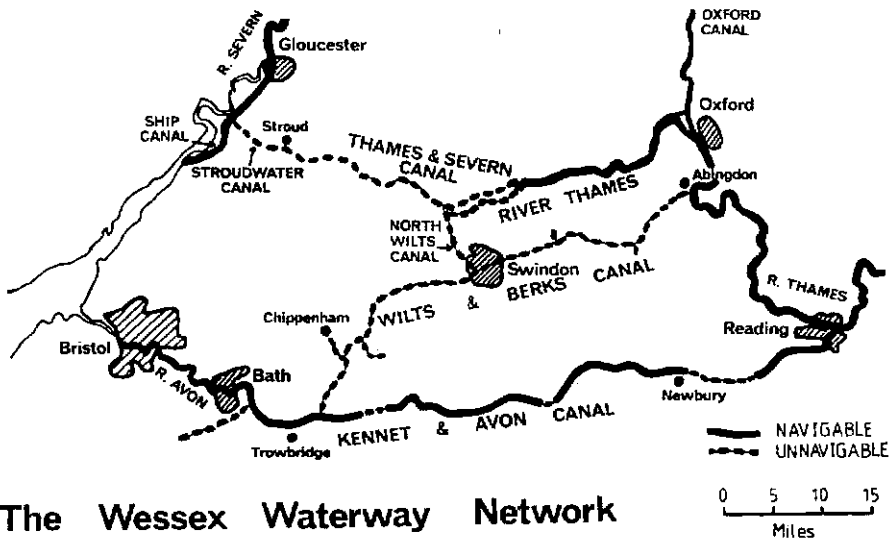


Letters to the Editor

Dear Sir,

On behalf of myself and the Wilts & Berks Canal Amenity Group, may I express the great sadness of all to hear about the death of David Boakes. We shall miss him.

Having read the last edition of the Trow, in particular the Trust Council notes on page 2 and the letter on page 18 from Bob Cutler and Bob Kear concerning the lack of activities on the east end of the canal, I feel that it is time the Stroudwater Thames & Severn Canal Trust started to look at its near neighbour, the Wilts & Berks Canal, as a possible navigational outlet. In 1985 we "launched" the concept of the Wessex Waterway Network. As you can see from the map, an alternative outlet to the Thames at Lechlade potentially exists through the Wilts & Berks and North Wilts Canals.



The Wessex Waterway Network

Obviously there are tremendous problems. However, over the last five years the Wilts & Berks Canal Amenity Group has been working hard on the restoration of the western branch between the Kennet & Avon Canal and Swindon. There are now several major work sites on this section. In addition, we have identified routes around Swindon. The west - north route follows the River Ray and would be the centre feature of the River Ray Parkway.

We have found that the best way to encourage support and enthusiasm is to suggest a framework into which slots today's projects. Viz. we



suggest the long term aim of full navigation and then, there is an extra reason for the different restoration projects.

To encourage more active members in Swindon, it may be time to put together a proposal for joining Swindon to the Water Park and to Lechlade, using the Thames & Severn Canal. This would give a medium term aim which can be pushed forward to gather support. What is also important is that this restoration scheme would be a viable project in its own right.

JOHN HENN. West End Co-ordinator, Wilts & Berks Canal Amenity Group.

Dear Sir,

On my many and various meanderings along the towpath, I have discovered a number of places where the canal and the River Frome are on the same level. At these points the canal engineers built culverts to top up the canal from the river. Readers may be interested to inspect these and discover others to which I have not yet meandered. They are:-

1. Whitminster Lock, near Saul Junction. There is a major culvert supplying water to the Gloucester-Berkeley Canal via the Stroudwater.
2. Meadow Mill Spill Weir, Eastington. At this point, Oldfield Brook flowed into the canal.
3. Ryeford Swing Bridge, at the rear of Kennedys Garden Centre. Culverts bring water from above the mill sluices into the canal.
4. Bowbridge. Immediately below the blocked off bridge there is a diagonal pipe under the towpath.
5. Griffins Mill Lock, Thrupp. A very ancient culvert, some twenty metres long, brings water from the River Frome into the canal below the lock steps. When first excavated there was evidence of a paddle frame at the river end of the culvert.
6. St. Marys Lock, Chalford. Immediately below the lock bridge there is a culvert and the remains of a weir across the river to raise it to a greater level than the canal. The weir is now breached and water is prevented from flowing from the canal into the river by a makeshift paddle. My thanks to Allan Merryweather for spotting this one.
7. Bakers Mill, Frampton Mansell. The Mill pond was used as a reservoir for the canal.
8. Daneway Portal, Sapperton Tunnel. The river Frome was dammed further up the valley and water was piped into the canal at the tunnel entrance.

RICHARD ATTWOOD, Eastcombe, Stroud.

Dates for your Diary

Sat	3 Jun	NEWBURY WATERWAYS WEEKEND - Newbury Wharf *
Mon	5 Jun	Western Branch Meeting
Sun	11 Jun	WILTS & BERKS CANAL EVENT - Calne *
Tues	13 Jun	Thames End Branch Meeting
Thur	15 Jun	Western Branch Noggin & Natter
Sat	24 Jun	TRIP TO CROFTON (see page 8)
W/E	24/25 Jun	Thames End Branch Working Weekend)
Tues	27 Jun	IWA Event (see below)
Mon	3 Jul	Western Branch Meeting
Sun	9 Jul	IWA Event (see below)
Tues	11 Jul	Thames End Meeting
Sat	15 Jul	STROUD SHOW including Trust Float *
Sat	15 Jul	TRUST ANNUAL BARBECUE (see page 8)
Thur	20 Jul	Western Branch Noggin & Natter
Sat	22 Jul	STROUDWATER WORKCAMP COMMENCE (see page 6)
W/E	29/30 Jul	Thames End Branch Working Weekend
Mon	7 Aug	Western Branch Meeting
Tues	8 Aug	Thames End Branch Meeting
Thur	17 Aug	Western Branch Noggin & Natter
Sat	26 Aug	THAMES END BRANCH WORKCAMP COMMENCES (see page 6)
	26/27/28 Aug	IWA NATIONAL RALLY, WALTHAM ABBEY *
W/E	2/3 Sep	END TO END SPONSORED WALK (see page 8 and centre pullout)
Mon	4 Sep	Western Branch Meeting
Sun	10 Sep	STONEHOUSE STEAM RALLY *
Tues	12 Sep	Thames End Branch Meeting
Tues	12 Sep	IWA Event (see below)
Sun	17 Sep	RAFT RACE & OTHER ENTERTAINMENTS (see page 8)
Thur	21 Sep	Western Branch Noggin & Natter
W/E	23/24 Sep	Thames End Branch Working Weekend

PLEASE RING THE APPROPRIATE NUMBER
(opposite) FOR FURTHER DETAILS

* denotes Trust presence.

WESTERN BRANCH VOLUNTEERS WORK ON RESTORATION & BOAT TRIPS EVERY WEEKEND

Thurs	27 Jun	7.30pm. at NATIONAL WATERWAYS MUSEUM (Schools Room) THE STEAM TUG MAYFLOWER. An illustrated Talk by Andy King - Supervisor of her restoration.
Sun	9 July	ANNUAL TRIP to the MON & BREC CANAL. BOAT TRIP on the OWEN GLENDOWER, hopefully followed by two alternatives. Possibly Big Pit, with one other Canal/Country alternative. IWA Adults £6. Children £4. OAPs £5. Application Forms from Gordon Lowthian, 111 Tewkesbury Rd., Gloucester.
Tues	12 Sept	7.30pm. at TEWKESBURY MARINA CLUBHOUSE. BRITISH WATERWAYS - REGIONALISATION & CHANGING ROLES. A talk by Andrew Stumpf, formerly in the Marine Section, Now Waterways Manager, River Severn & Gloucester & Sharpness Canal. All welcome.

The Trip Boat ventures into the Sapperton Tunnel (BACK COVER) with a Group from the River Thames Society and returns (FRONT COVER).



Who's Who in the S. T.&S. C. T. Ltd.

DEPARTMENTS

MEMBERSHIP SECRETARY	RICHARD ATTWOOD	7 Hidcote Close, Eastcombe, Stroud, Glos., GL6 7EF	(Brimscombe 885057)
PRESS & PUBLICITY	BERNARD DONOVAN	10 Mount Pleasant, Bisley Old Road, Stroud, Glos., GL5 1NA	(Stroud 77541)
SALES MANAGER	CHRIS JONES	The Courts, 27 Walton Road, Clevedon, Avon, BS21 6AE	(Clevedon 875714)
EVENTS ORGANISER	JEFFERY SHAW	The Cleeves, Nailsworth, Glos., GL6 OPA	(Nailsworth 3373)

THAMES END BRANCH

SECRETARY	DERYCK WATKINSON	12 Hampton Grove, Meysey Hampton, Cirencester, Glos., GL7 5JN	(Poulton 661)
TREASURER	NICHOLAS MELCHIOR	28 Grove Hill, Highworth, Swindon, Wilts., SN6 7JN	(Swindon 762510)

WESTERN BRANCH

CHAIRMAN	RICHARD ATTWOOD	7 Hidcote Close, Eastcombe, Stroud, Glos., GL6 7EF	(Brimscombe 885057)
VICE — CHAIRMAN	BERNARD DONOVAN	10 Mount Pleasant, Bisley Old Road, Stroud, Glos., GL5 1NA	(Stroud 77541)
SECRETARY	TONY JONES	7 Stringers Close, Rodborough, Stroud, Glos., GL5 3RB	(Stroud 2915)
TREASURER	ALEC WHITEHOUSE	37 Cotswold Green, Stonehouse, Glos. GL10 2ET	(Stonehouse 2284)

WORKING PARTIES

WESTERN BRANCH	DOUG BLAKE	19 Stratton Rd., Gloucester (Glos 415843)	
THAMES END BRANCH	NICHOLAS MELCHIOR	28 Grove Hill, Highworth, Swindon, Wilts., SN6 7JN	(Swindon 762510)
WASTE PAPER COLLECTION	BILL EVILL	The Firs, 8 Belle Vue Road, Stroud, Glos. GL5 1JT	(Stroud 6631)

THE TROW EDITOR

DAVID JOWETT	48A Stondon Park, Forest Hill, London, SE23 1JZ	(01 699 9816)
--------------	--	---------------

