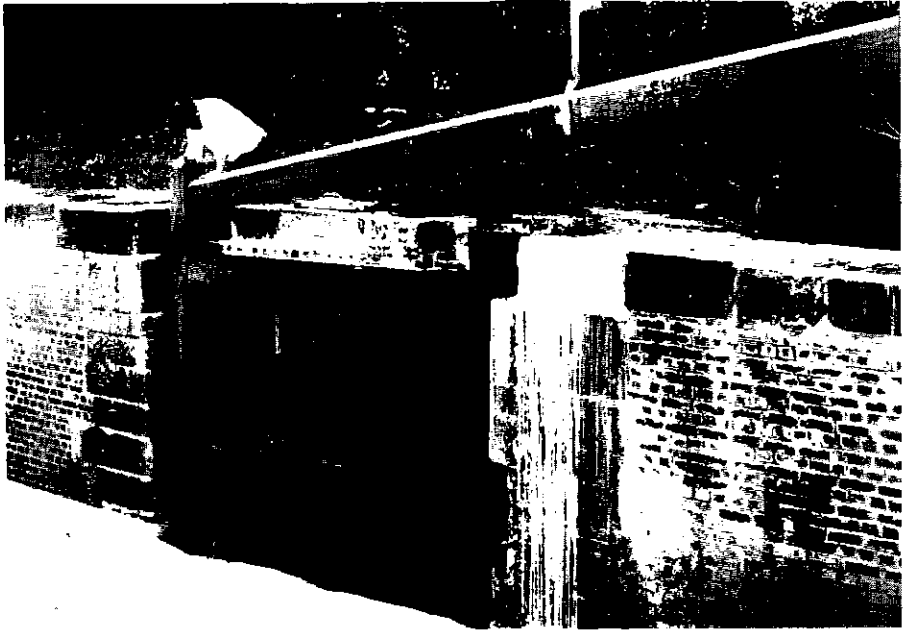


Trow

THE OFFICIAL MAGAZINE
FOR MEMBERS AND FRIENDS
WORKING TO RESTORE THE
COTSWOLD CANALS



NO 71 WINTER 1990 50 P

COPY DATES

SPRING.....30th JANUARY
SUMMER.....30th APRIL
AUTUMN.....30th JULY
WINTER.....30th OCTOBER

THE VIEWS & OPINIONS IN
THIS MAGAZINE DO NOT
NECESSARILY REPRESENT THE
VIEWS & OPINIONS OF THE
COTSWOLD CANALS TRUST

Contents

Spades & Scissors	2
Steamboat President No. 195	3
Field Officer's Report	4
Western Branch	5
Summit & Thames End Branch	8
A Lock Chamber Comes Back to Life	10
IWA Clean-Up Weekend	13
Membership Matters	14
Letters to the Editor	16
Plant Operator Insurance	16
Sales & Publicity	17
Dates For Your Diary	20

Published by the Cotswold Canals Trust
Compilation and Layout by David Jowett

Printed by Alan Mayo, Lewiston Mill, Brimscombe, Stroud, Glos.

Pictorial

Steamboat "President" being filmed from the towpath of the Gloucester/Sharpness Canal at Saul Junction by Central TV shortly before its journey to Walk Bridge. Full report on page 3.



Spades & Scissors



TWO HIGHLIGHTS OF THE OPEN DAY, 7 OCTOBER 1990. ABOVE: Bob Riding, Chief Executive of RoyScot Finance Group plants a tree to mark the site of the Newtown landscaping project. BELOW: Roy Nicholas cuts a ribbon pinned to the new gates at Newtown to mark restoration of the lock



Steamboat President No. 195

Report by CHRIS JONES

The balmy afternoon of Friday 24th August, saw one of the highlights of 1990. Due to considerable efforts by Lynn Roxburgh of Insight Associates in Bristol, the last working steam-powered narrow boat left in Britain, "President" made an historic journey down the clear section of the Stroudwater Navigation. The purpose of the exercise was to focus attention on the first obstacle to navigation, the lowered Walk Bridge. This was certainly achieved as there were representatives from the local newspapers and radio, local councils and a television crew from Central TV, which used the material to form part of their Gloucester 90 programme.

President is a marvellous vessel being originally built in 1910 and restored in the 1970s by Malcolm Braine. The boat is based at The Black Country Museum at Dudley but has already travelled over 700 miles this year, including the 80 mile trip from Dudley to Saul Junction. The boat used to travel between London and Birmingham, a 53 hour trip, by day and night, or as it was commonly known, "fly running". Loads were high value transit cargoes such as tobacco, sugar and spices, and less often the lower value loads of coal and timber.

The Skipper on the trip down the Stroudwater, who managed very skilfully to reverse all the way back to Saul Junction was Richard Thomas, who we cannot thank enough. Richard's parting shot was that he would be happy to return with President to be the first vessel to proceed beyond Walk Bridge!



Field Officer's Report

Field Officer **KEN BURGIN**

This last quarter has seen meetings between the Trust and a number of important bodies. Two presentations have been given to Cotswold District Council, the first to some of the Officers and the second to the full elected Council. In both cases the response has been most favourable and the Trust is looking forward to a deeper relationship in the coming months and years. A meeting has also been held with the planning department of North Wilts District Council and this too was a most encouraging meeting. Both Cotswold and North Wilts District Councils are working on local plans at the present time and the Trust hopes that support for the restoration of the Thames & Severn Canal will feature in both. Full support from all three District Councils will be an important milestone in the progress towards restoration of the canals.

The National Rivers Authority (Thames Region) have agreed to fund 50% of the study into the restoration of the Thames & Severn Canal from Inglesham to the Cotswold Water Park. The relationship between the Trust and the N.R.A. Thames Region (formerly part of Thames Water) has grown over a number of years and their support is highly valued. The Trust hopes to build on contacts made with the N.R.A. Severn-Trent Region at their stand at the Gloucester National Waterways Festival. Fundraising for the remaining 50% of the Halcrow study continues as it is very important to get it started.

The planning application for gravel extraction at Roundhouse Farm, Marston Meysey has been refused by Wiltshire County Council. By the time you read this, a public enquiry will have taken place. The Trust maintains that the re-instatement of the canal should form part of the after-use conditions of the site in the event of permission being granted. The Trust also shares the widespread concerns that there is no proper plan or policy in place for this area which falls between the two sections of the Water Park.

The recent Calne/Fairford fuel pipeline was laid in a way that will allow for the re-excavation of the infilled Thames & Severn Canal at Kempsford. The canal at this point can be identified by a slight bump in the ground and not a dip as one might expect!

Proposals for the Latton Bypass are with the Department of Transport and the Trust should soon know if the canal bridge is to be included without a fight. In the meantime, Cotswold District Council have requested that a canal bridge be built under the Spine Road as part of the same scheme!

Apparently it would cost £65,000 to lower the M.O.D. pipeline under the bed of the Stroudwater Canal just west of the A38 as part of the 1991 repair and maintenance programme. The Trust is still arguing that this should be done without charge to us.

Finally, it looks as if that rather annoying water pipe which crosses the canal at Newtown Roving Bridge with only two feet of headroom might soon be moved for us. This will mean that the canal would be navigable from Blunder Lock to Bonds Mill as soon as Newtown Lock is fully operational. Full story next time.

Western Branch

Report by KEN BAILEY

Time to sit down and look at what we have achieved in the last couple of months. As I predicted last issue, we had a busy Summer. The National Rally at Gloucester (organised by the Inland Waterways Association) proved to be a great success. I should like to express my thanks to the half dozen of our usual local members who went along to help the IWA on the two Saturdays before the event. Even with a small turnout we provided a useful input, pegging out a large proportion of the site on the first weekend and putting up temporary lampposts on the second Saturday. Due to other pressing tasks, namely working on Pike Lock (reported in full elsewhere), we were not able to help with the clear up after the rally.

Work has continued at Newtown Lock with a party from London WRG spending a hot weekend on site in July. They excavated one of the top ground paddle blow holes and reconstructed it completely. Others in the group cleared the bypass weir which takes water around the lock chamber and repointed the brickwork and also levelled the ground on the offside of the lock. The local volunteers have excavated and reconstructed the blow hole on the towpath side. For those who don't know what a blow hole is or what purpose it serves, it is basically a small tube which runs from the culvert used during locking up to towpath level. The tube is approximately 4 inches across. When the lock is empty and the top paddles are first raised, air trapped in the culvert has to escape. Rather than being forced down into the lock and back up, it is allowed up the blow hole. Likewise, when paddles are lowered, particularly if the lock is only part filled, a vacuum can be generated in the culvert as the flow of water in is stopped, but the water already in the culvert continues downward. Air in this case can be sucked in easily. If the vent is blocked, as happened at Blunder Lock, the side of the culvert can actually be pulled in. Look at the stone block just below the paddle hole on the towpath side. You will notice that one end is recessed slightly!!

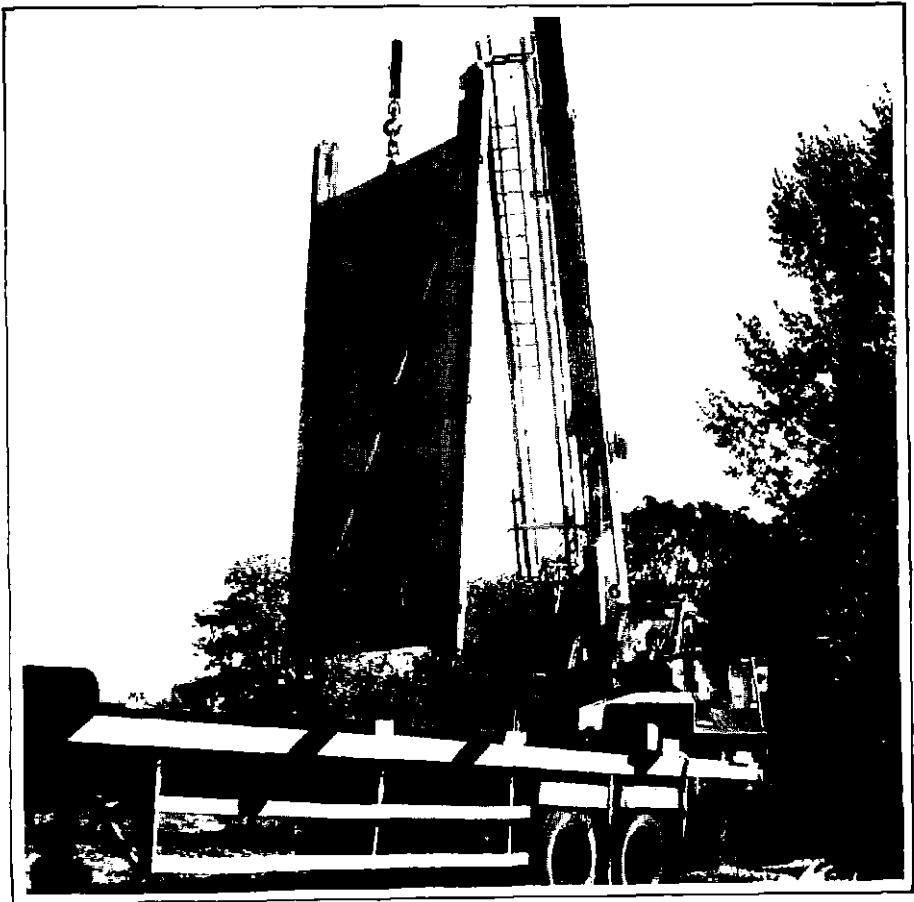
A couple of other jobs had to be done at Newtown Lock. The badly eroded mitre timber was cut away using a chainsaw and wedges leaving the original "nails". These "nails" or spikes are approximately 18 inches long and an inch square and also had to be extracted by using some pieces of steel angle, a couple of blocks of wood and a 5 ton hydraulic jack which were arranged to give an effective 75 ton lift on a single nail. Each nail was eventually removed taking nearly an hour each. New anchor points for the gates consist of two 3" steel angles per gate which had to be set into the top stonework by over a foot each on every quoin. Again, not an easy task involving drilling a number of $\frac{1}{4}$ inch holes in a square and chiselling the stone out of the centre taking nearly a day for each pair of gates.

Friday 21st September saw the bottom gates for Newtown Lock delivered and craned into position. They arrived on site around 2.00pm and bottom gates, balance beams and top gates (which were delivered earlier in the year) were all in position by just after 4.00pm. They still require final fitting, which should take place around the time you read this and the lock will be fully operational by the Spring.

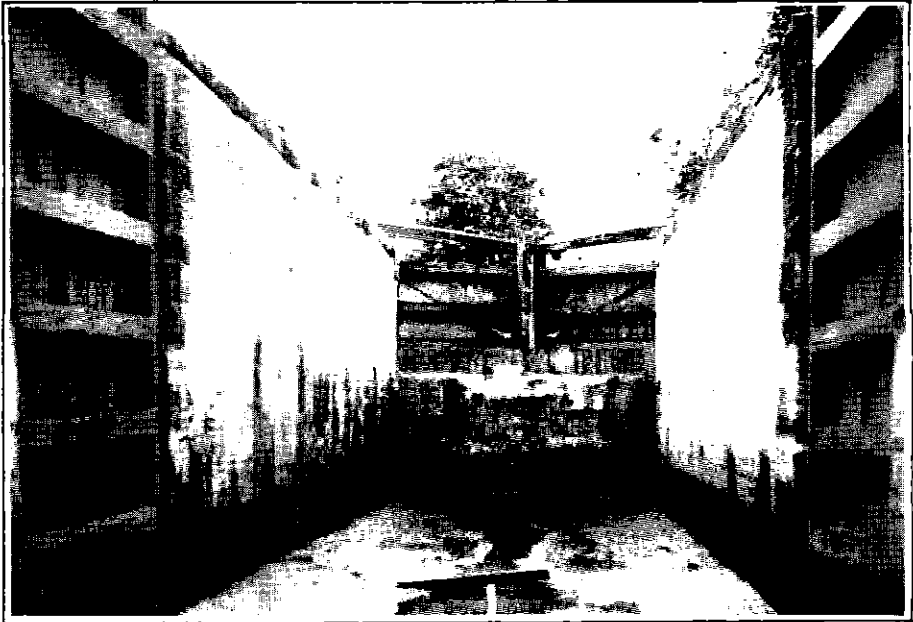


Back at the compound, plant maintenance has continued with the hydraulic compressor unit being transferred from its castors onto a proper road trailer. We also purchased an old farm tractor with front loader and rear pallet forks. It requires a small amount of work but will shortly be very busy doing some levelling jobs as well as digging out a proposed slipway just above Pike Lock.

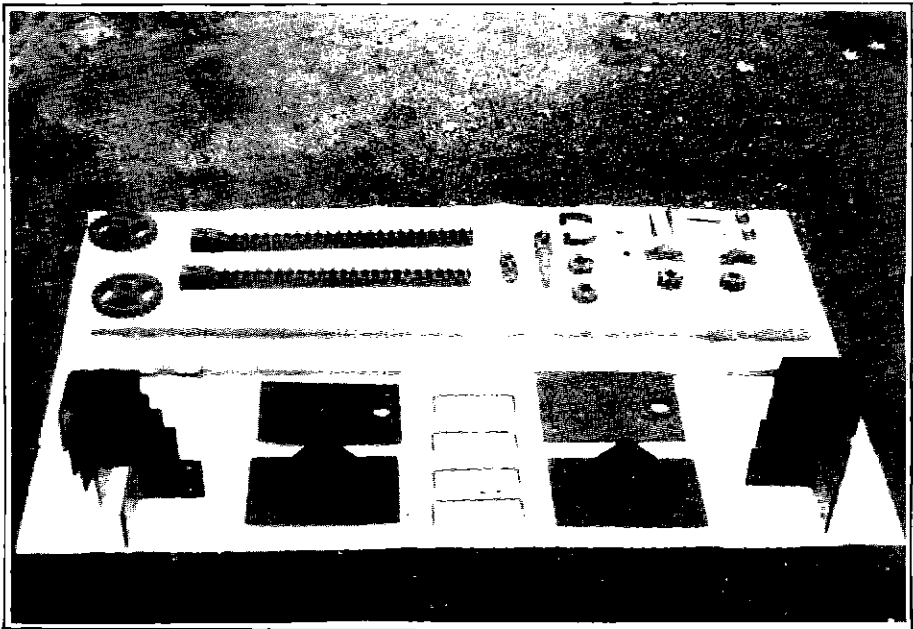
Plans are now well in hand for the transfer of our compound to a new location. As plans have progressed for the landscaping and formation of a "Canal Trail" from Blunder to Newtown it was decided that the compound should be moved to a new location just across the road from Pike Lock, but still next to the canal. This area is currently a redundant Council Highways yard which provides a better shaped plot to secure against the area's thieves who have stolen a number of items including a mower from our existing compound and sheds over the last year or so.



A bottom gate is lifted clear of the lorry at Newtown



ABOVE: A full set of gates in place at Newtown Lock
BELOW: Just some of the "bits and pieces" to be fitted to the gates



Summit & Thames End Branch

Secretary **JAMES KING**

Following the highly successful public meeting held in July at the Niccol Centre, Cirencester, the branch now has a new rejuvenated look about it. A good nucleus of new members with lots of enthusiasm and plenty of good ideas have been added to the Branch. We now need to translate this "full of eastern promise" into positive action during 1991 and beyond!

Highworth Scouts have been busy doing some excellent "jungle bashing" at Coates Roundhouse. They thoroughly enjoyed themselves on the weekend of 15/16 September, camping at the Tunnel House Inn and clearing a section of canal adjacent to the Roundhouse. Full marks and thanks to them for their efforts.

Not to be outdone, the Branch organised a follow-up work party and barbecue at the Roundhouse on Sunday 14th October. Attended by over thirty people, the event was most enjoyable and successful. Further clearance work and the first stages of vandal-proofing on the building was carried out. Thanks to John Lucas for arranging the drinks and to Jon and Margaret Nixon for organising the food.

At Cerney Wick Lock work has now been completed on the ground paddles to the top gates, thanks to some skilful engineering by the Cutler family. Both sets of paddle gear are now fully serviceable and we await the rains to see how effective the new Cerney Wick lock is in holding water.

Finally, a new date for your diary. On Wednesday 12 December there will be a Noggin & Natter night at the Trouble House Inn, near Tetbury. Ted Prince of the "History of Tetbury Society" has kindly agreed to come along and give a short light-hearted talk on local history. We will also be showing some new slides and may finish off the evening with a quick game of skittles! For full details on what promises to be a most entertaining evening, please contact me on Tetbury 502797.

OPPOSITE: Coates Round House. Most of the ivy which was choking the structure has gone. The garden is seen here after some clearance work.

The Clothiers Arms

1 Bath Road, Stroud, Gloucestershire

Resident Proprietors

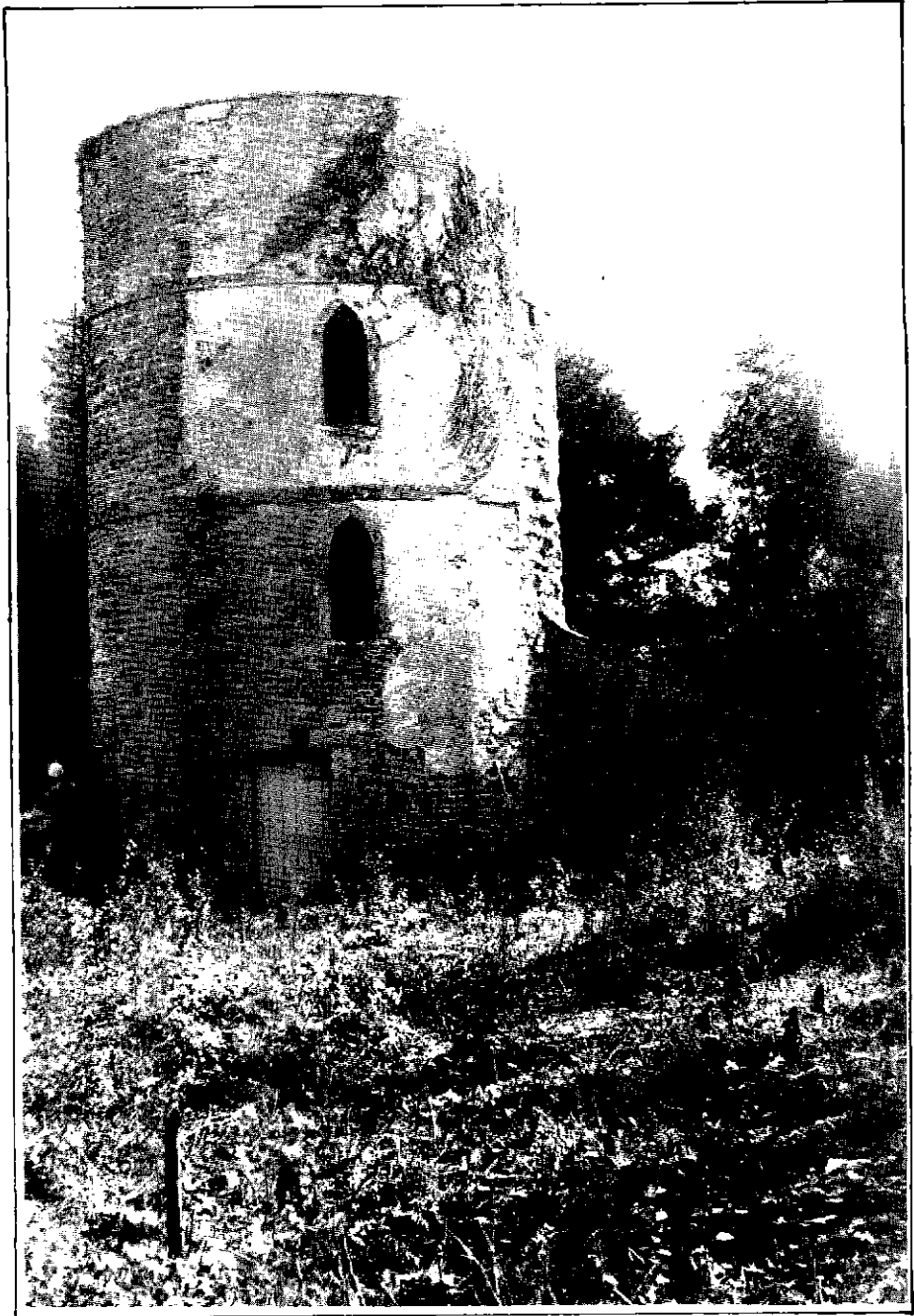
Luciano & Aline Magalotti

Telephone Stroud

(0453) 763801



Free House



A Lock Chamber Comes Back to Life!

Report by Ken Bailey

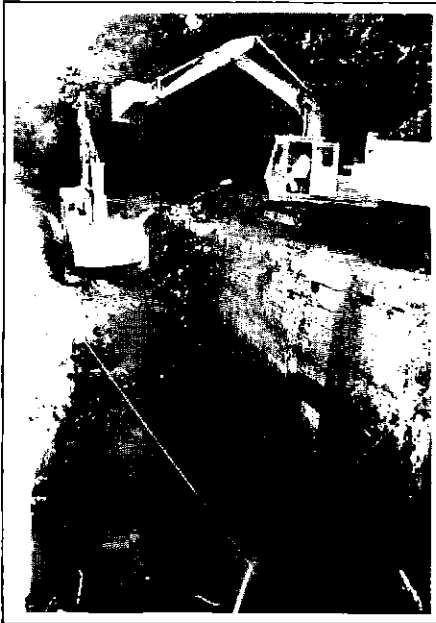
At the start of 1990 the Trust Council sat down to sort out some tasks for the year, and in particular, what major jobs could be financed by the £25,000 grant for the year promised by Stroud District Council. Working on the basis of "The Five Year Plan" produced during 1989, the obvious tasks were either to restore Pike Lock, Dock Lock, or both if money permitted. Richard Attwood took on the job of preparing "invitations to tender" for each task and sent them to a number of possible contractors. The replies returned over the following weeks resulted in a decision to both excavate and rebrick Pike Lock.

Of the tenders received, Spencers of Nupend were selected to carry out the excavation and Ravenhill & Englefield of Nailsworth the rebricking. Apart from their reasonable costs, Spencers had previously carried out several jobs on or near the canal which included levelling the Ryeford MSC tipping site and spoil heap by Newtown Lock together with clearance of Wallbridge Lock chamber for Stroud Valleys Project. Ravenhill and Englefield had carried out the rebricking of Wallbridge Lock Chamber.

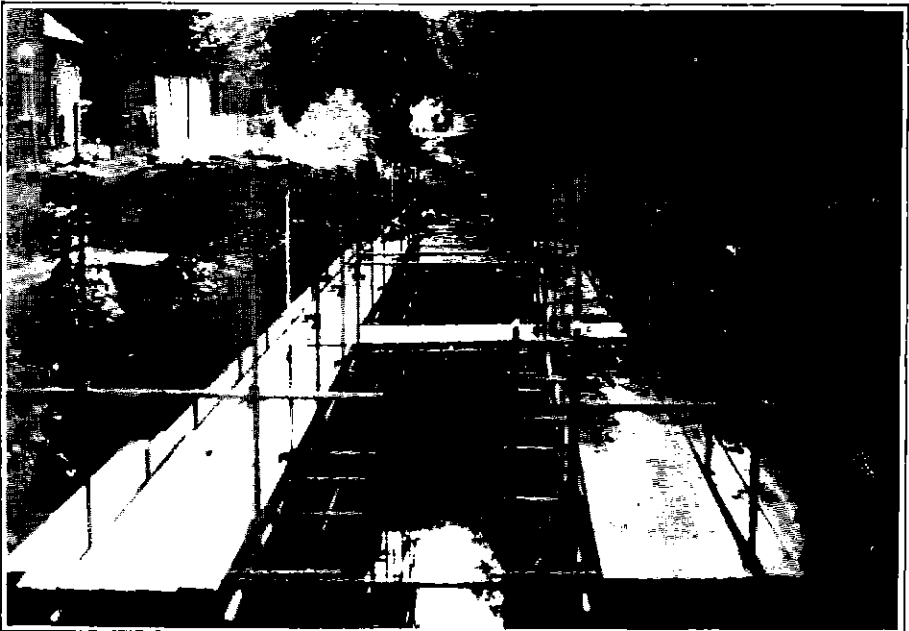
The selected tenders were presented to Stroud District Council for their approval and some ten weeks later on the 7th August, approval was given. As time was marching on, it was planned to start draining the pound above Pike Lock on the 4th August with members of Stroud Anglers on hand to remove fish from this section to other places on the canal. Unfortunately, at some point during the previous week, both of the Trust's large pumps were vandalised with fuel lines, filler caps and dipsticks being removed. Undeterred, the fishermen did their best to net the fish while we repaired the damage. I should explain that a pump was required because when Pike Lock had been infilled, a substantial reinforced concrete dam was built across the top of the lock and the sluice holes were also filled with concrete, preventing any simple draining method. Pumping finally started on the Sunday afternoon and continued during the evenings but the pump was still not functioning correctly and required constant attention. Pumping and removal of fish was finally completed on Sunday 12th August with two large excavators ready and waiting on the lock side.

Monday saw preparation work on the site with an abortive attempt made to start removing the dam. Tuesday saw the dam removed along with one third of the infill, one excavator being used in the chamber to actually dig out and stack on the lock side whilst the other fed the fleet of lorries transporting the spoil away to a tipping site in the Nympsfield area.

Wednesday saw the remainder removed, the chamber walls cleaned and an area just above the lock also cleared. On Thursday one excavator climbed the canal bank and emerged back onto the lockside via a small copse. Before leaving the site, one excavator removed a number of coping stones to enable the bricklayers to work more easily. In less than a week an overgrown infilled lock had been cleared of about 700 tons of infill and prepared for the brickwork team.



ABOVE: Two photos showing the excavators at work. BELOW: Scaffolding in place, with coping stones removed and walls ready for rebuilding





On 28th August, water which had drained from silt in the pound above down into the chamber, was pumped away so that the scaffolders could completely scaffold the chamber the following day.

The bricklayers started work shortly after prompting one question in particular to be asked. Why did they start at the top and not the bottom? The answer is fairly simple really. Starting at the top, there is no loose material above you at any stage which might collapse when bricks are removed. The operation is fairly straightforward in that damaged bricks are cut out completely and replaced, while intact areas have loose material between the bricks cleaned out and repacked with mortar and pointed up.

So as to retain the same colour bricks in the walls, it was found possible to remove bricks from the top of the wall behind the coping stones and fill the area with concrete. During rebuilding, a couple of pieces of timber which had no apparent use, were removed from behind the front layer of brickwork. A recess is also being incorporated to allow fitting of an escape ladder.

For those who like figures, the chamber is 72' long, 16'6" wide and 20' deep from the top of the coping stones to lock bottom. The lock originally had a fall of some 11' to a fairly deep pound below. Lock walls are some 6' thick at the top and presumably similar to the full depth. That equates to nearly one million bricks in this particular chamber with some forty thousand requiring to be either cut out and replaced or repointed.

Assuming that a similar quantity of money is available from Stroud District Council or private industry next year, we aim to arrange a similar work programme for Dock Lock.

Apart from the actual lock chamber, the bywash or spill weir around Pike Lock needs rebuilding. The weir entrance, including the culvert under the towpath, was cleared by a visiting workparty from the Newbury Branch of the Kennet & Avon Canal Trust. Since then a few of our locals, led by new member, Steve Court, demolished the remains of the old culvert, constructed a curved former and began rebuilding the archway and front wall. It is anticipated that the brickwork at the front of the weir will take three or four weekends to complete which will be the easy part of the operation. We then have to dig up a fair amount of Ken Burgin's garden to replace arches at the back of the weir and also to reroute the underground culvert which has had a septic tank put in the middle of it by a previous owner of Pike Lock Cottage!!

COTSWOLD CANALS CHALLENGE

A new event for Stroud and the Stroudwater Navigation

CANOE BI-ATHLON SUNDAY 14 April 1991

over a 9 mile return course between Stroud and Eastington
Please ring Chris Jones for details (0272 875714)

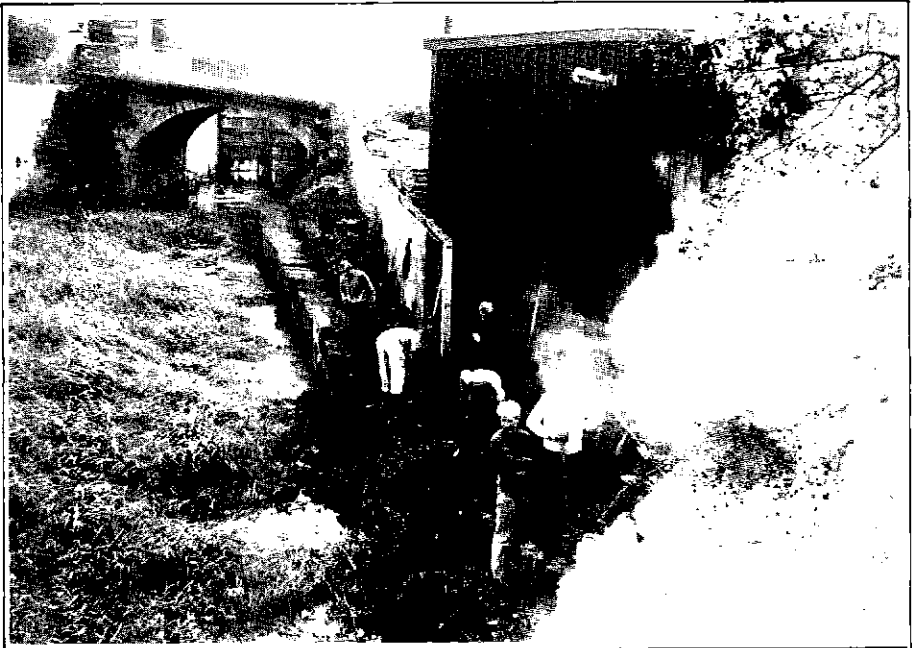
I.W.A. Canal Clean-Up Weekend

Report by CHRIS JONES

The weekend of 20/21 October saw a national campaign organised by the I.W.A. to focus attention on the ever growing leisure activity of dragging rubbish out of Britain's canals. As a Trust we feel we have considerable experience in this field, so it was agreed that this was an event for us. The photograph tells the tale (but have a look for yourself), and what a success it was.

In the two days a hardy band of men and women gathered from the Friends of Stroud Valleys Project, Gloucester IWA, Scouts from Cheltenham, the Cotswold Canals Trust and gullible passers-by who all transformed the look of the Wallbridge Basin area from an overgrown mess to an area of natural and historical beauty.

Doesn't it go to show what a bunch of willing volunteers, a load of size 10 wellies, an endless supply of tea and a fair amount of free beer can do. The skips are full and the canal is clear. Easy, isn't it?



This small group concentrated on cutting back a mass of weeds and soil to reform the towpath, clearly seen between the volunteers and the bridge.

Membership Matters

Membership Secretary RICHARD ATTWOOD

The Cotswold Canals Trust membership details are now computerised and registered under the Data Protection Act 1984. In accordance with the Act, your entry is available for you to inspect. However, you can now check your main membership record from the computer printed label on the Trow envelope as follows:-

The **first number** is your membership number.

The **first letter** is your class of membership. (A - Adult, F - Family, P - Pensioner, Y - Youth, L - Life, S - Associate).

The **second number** is the month in which your subscription is due.

The **second letter** is your method of payment subscription. (M - cash or cheque, B - Bankers Order.)

Title and Surname. If your information is incorrect please send the corrected label to the Freepost membership address.

Address & Postcode.

This quarter we are pleased to welcome the following new members :-

Sir Norman Wakefield, Stroud-----Mr A Moore, Stroud----M & K Hurd, Keynsham
Mr GR Amey, Abingdon-----Mr SA Clutterbuck, Stroud-----RJ White, Stroud
J Witchell, Midsomer Norton-----Mrs D Watts, Stroud-----Mr D Mason, Stroud
Mr GW Stephenson, Cheltenham-----Miss S Beardsmoore, Cirencester
Mr A Screen, Manchester---Dr EJ Skerrett, Bristol---Tony James, Nailsworth
Mr & Mrs DB Hardie-Stewart, Stroud-----Saul Junction Boat Owners Club Ltd
Mr DN Kitchiner, London-----Mr S Court, Frampton-on-Severn
Mr DI Dearnley, Tetbury--Mr NM Atty, Cheltenham---Mr CJ Lowe Coppull, Lancs
Mr RG Smithett, Bedford--Dr & Mrs Main, Ross-on-Wye---Mr PLT Stroud, London
Mr K Fraser, Leighton Buzzar---Mr AS Nowell, Lechlade----L Emery, Lechlade
M & J Fletcher, Bolton-----Mr H Rackham, Tuffley-----Mrs C Osborne, Tuffley
Mr & Mrs M Donlan, Prestwich--R Pearman, South Ruislip- -Mr P Munns, Stroud
Mr & Mrs K Charnock, Bolton--Mr SC Ridgell, Berkeley--Mr W Phillips, Stroud
Mr IA Northcott, Stonehouse--Mr E Clayton, Stroud--Mr JC Ferguson, Gloucester
Mrs PC Darby, Nailsworth---Mr & Mrs P Easto, Cam---Miss S Berridge, Stroud
Mrs JD Gerber, Stroud-----Mr S Smith, Tunbridge Wells----RE Elsdale, Stroud
Mr N Whitear-Smith, Stroud-----Mr & Mrs AC Hopkins, Gloucester
Mr JG Stark, Cirencester-----Mr WL Nicholson, Princes Risborough
Mr AP Smart, Kidderminster-----Mr AC Hopkins, Gloucester

Number of family members	180
Number of adult members	302
Number of youth members	11
Number of life members	11
Number of pensioner members	97
Number of associate members	6
Total Number of members	607



The gentle Sunday meanders continue in 1991. Record these dates in your diary now!

Sunday 3rd March - 2:00pm - Meet at Sapperton Church (OS 948033) to explore the village and its canal. A two mile up and down walk.

Sunday 7th April - 2:00pm - Meet at the Cotswold Water Park Information Point (OS 072972) to visit Boxwell Lock. A two mile level walk.

Sunday 5th May - 2:00pm - Meet at Siddington Playing Field (OS 031998) to explore the Siddington Flight and the Cirencester Arm. A two mile level walk.

Sunday 2nd June - 2:00pm - A visit to the Black Gutter and St Marys Mill meeting at Chalford Round House (OS 893025). A two mile up and down walk.

Sunday 7th July - 2.00pm - A visit to the Lonely Lock at Eysey, subject to permission from the landowner. Meet at the River Thames in Cricklade (OS 098947) for a three mile walk.

Sunday 4th August - 2:00pm - Meet at the cycle trail car park (OS 806048) to visit Ryeford and the Ocean. A level two mile walk.

THE END TO END WALK PART ONE

Sunday 15th September - 9:00am - Meet in the Riverside car park, Lechlade (OS 072972) to walk about ten miles following the line of the canal as closely as possible to the Cotswold Water Park Information Point (OS 072972) where transport will be available back to the start.

THE END TO END WALK PART TWO

Sunday 22nd September - 9:00am - Meet at the Cotswold Water Park Information Point (OS 072972) to walk about ten miles following the line of the canal to Sapperton Church (OS 948033) where transport will be available back to the start.

THE END TO END WALK PART THREE

Sunday 29th September - 9:00am - Meet at Sapperton Church (OS 948033) to walk about twelve miles following the line of the canal to Saul Junction (OS 757094) where transport will be available back to the start.

ALONG THE COTSWOLD CANALS

A talk accompanied by a slide show at Stroud Subscription Rooms
Friday 25th January 1991 at 7:30pm.

This visual meander will be the first of a series to be presented at various places twixt Severn and Thames during 1991. Watch the local press for details!

Letters to the Editor

Dear Sir,

In the Kennet & Avon Canal Trust Museum store are two copper penny tokens issued by the Thames & Severn Canal dated 1795. One is in fair condition, the other rather poor.

I wonder if you would like to take them over officially and provide the right conditions for preservation. If you ever hear of any K & A material available, I would be delighted to know.

Best wishes with your projects.

D. J. FULKER, Curator, Kennet & Avon Canal Trust Museum.

The Trust has written to Mr Fulker to accept this kind offer, and until the Trust has its own facilities it is intended to lodge the tokens with a local museum.

Plant Operator Insurance

Since 1st September, new rules have applied to every group covered by the IWA insurance scheme in which the Trust participates. Any member of the Trust **was** until then covered while engaged in volunteer tasks. The new rules now mean that anyone operating plant included in the categories below **must** carry an IWA/WRG plant operator (or instructor) card for that piece of plant, their driving licence and must be authorised by the workparty leader.

The categories are as follows:-

- 1) Small vans (up to and including 4 wheel transits)
- 2) Large vans (6 wheel transits etc)
- 3) Land Rovers
- 4) Trailers
- 5) Barrow Hoists
- 6) Small Cranes (eg Jones KL15)
- 7) Dumpers (2 or 4 wheel drive)
- 8) Smalley Excavators
- 9) Skid Steer Loaders
- 10) Small Track Laying Excavators
- 11) Large Track Laying Excavators
- 12) JCB 3 (and clones including own tractor)
- 13) Draglines
- 14) Tugs/Barges/Workboats

Instruction for some categories and application forms are available from Ken Bailey (tel 0272 601710) and should be returned via him.

Sales & Publicity

Sales Manager CHRIS JONES

Doesn't August seem a long time ago? In case you had forgotten, the National Waterways Festival organised by the I.W.A. took place from the 25th to 27th of that month. Three days of fine weather and very important times for the Cotswold Canals Trust. For those of you that were there, and an awful lot of you were, you saw the first public launch of the new name, the new identity and the message that we mean business! I hope you liked what you saw. It was the biggest presence we have ever had anywhere and is the sign of things to come. The amount of effort that goes into such a production is immeasurable and 1001 people are involved but in this instance two stand out for totally different involvements. Had it not been for "Ken the Maggot" and "Stew The Artist", this show would have looked a lot different. Thanks chaps, I'm now looking towards the Black Country National Waterways Festival on 24th to 26th August 1991. I hope you are.

It is often said that one man's rubbish is another man's living. Well that is certainly true in canal restoration terms. This is a request for your discarded items that will benefit two very important areas of Inland Waterway Restoration.

a) Cotswold Canals Trust Working Parties

b) I.W.A. Stamp Bank

We need:---Air Mile Points---Badges(Pin-on/Sew-On)--Waterways Magazines(Old issues)---Cigarette Coupons----Filling Station Stamps---Green Shield Stamps Hand Tools----Postage Stamps (Used or Otherwise)----Postcards (New or used) TROW magazines (Old Issues)

ALL CONTRIBUTIONS GO DIRECT TO CANAL RESTORATION. PLEASE CONTACT ME TO ARRANGE COLLECTIONS OF ANY ITEMS YOU MAY BE ABLE TO SPARE.

Stroudwater Cottage

Available for Weekends
Midweek Breaks Longer Lets

Very Well Appointed
Sleeps 4/5

Close to the Canal near Stonehouse



Telephone 0455 611508
for details

A DONATION TO THE TRUST WILL BE MADE FOR EACH BOOKING RECEIVED AS A RESULT OF THIS ADVERT. PLEASE MENTION THE TROW.



Last year when the Sales Roadshow attended the National Waterways Festival at Waltham Abbey, the neighbouring pitch was manned by a "crowd" clad in Turquoise T-Shirts. They were selling all manner of things ranging from the usual canal-related wares to air horns, which were demonstrated at regular intervals to boaters with whom they were very popular - but not with us! We peered through our caravan window with envy as we watched the "crowd" disappear in shifts into their caravan to dine on three course meals complete with gravy and all the trimmings. Quite a contrast to our takeaway- burger staple diet.

Needless to say, we quickly made friends with the ever-growing bunch who were in fact members of the "Manchester, Bolton & Bury Canal Society". Since then, we have met up at various shows around the country including the Trailboat rally at Hebden Bridge last May. They were taking lots of money on a game invented by one of their members, Chris Lowe, and we expressed our admiration.

We next saw the "crowd" at the "National" at Gloucester in August when they had a surprise for us. They had made another of the popular games in "Cotswold Canals Trust" colours and presented it to the Trust as seen below. Left to Right are Richard Chester-Browne, Liz Donlan, Mike Donlan, John Fletcher, Margaret Fletcher, Chris Lowe, Kevin Charnock, followed by our own Bruce Hall, Chris Jones and Richard Attwood. Thanks to the "Manchester, Bolton & Bury" crowd for the gift. We soon put it to good use at Stonehouse Traction Engine Rally two weeks later where it proved very popular!





As this is the last chance I will get to entice all you Christmas present hunters to part with lots of money, here are some suggestions with two new items topping the list.

Firstly, the ideal gift for any collector of the TROW or any other A5 publication. At last your problems have been solved - what to do with 71 editions of our magazine! This is a **Cordex Binder**, custom made in Bottle Green, holding 12 issues - the ideal way to neatly store and preserve your valuable collection.....£ 3.10

Secondly, a new **Christmas Card** specially commissioned for the Trust to incorporate a canal scene and a cleverly designed lock gate feature. These cards have to be seen to be believed and come complete with an envelope. Go on - impress your friends each....£ 0.20

PUBLICATIONS

Around The Cotswold Canals - 10 Circular Walks*	£ 2.00
Restoring the Cotswold Canals*	£ 0.50
The Stroudwater Canal Vol 1 (M. Handford)	£ 3.50
Thames & Severn Canal (H. Household)	£ 6.95
Thames & Severn Canal (D.J. Viner)	£ 3.80
S.T&S.Canals in Old Photographs (Cuss & Gardiner)	£ 6.95
S.T&S.Canals Towpath Guide (M. Handford & D.J.Viner)	£ 7.50
Working Life on Severn & Canal (H. Conway-Jones)	£ 7.95
The TROW (All issues available)*	each £ 0.30

CLOTHING*

Acrylic Sweater with "new" Embroidered logo (Bottle Green)*	£14.00
Baseball Hat with printed logo*	£ 3.75
Cotton/Acrylic Sweat Shirt with new embroidered logo (Light Grey)*	£13.00
Cotton/Acrylic Sweat Shirt with printed logo (Green)*	£10.00
Cotton Tennis/Sports Shirt with new embroidered logo*	£12.00
T - Shirt with printed logo (Green)*	£ 4.50
Sew on Badge with new embroidered logo*	£ 2.50

THIMBLES All Hand Painted

Round House	£ 3.00
Buckby Can	£ 3.00
Cotswold Canals Trust	£ 1.50

* Denotes item specially produced by or for the Cotswold Canals Trust

All items available from CHRIS JONES, SALES MANAGER, THE COURTS, 27 WALTON ROAD, CLEVEDON, AVON, BS21 6AE. Tel 0272 875714

Postage & Packing 50p per order please (£5.00 Overseas)

Cheques & P.O.s payable to "Cotswold Canals Trust"

Dates for your Diary

Mon 3 Dec Western Branch Meeting
 Wed 12 Dec Summit & Thames End Noggin & Natter - see page 8
 Tue 18 Dec IWA Event - see below
 Wed 26 Dec! WRG Winter Camp, Sapperton - until 31 Dec

1991

Mon 7 Jan Western Branch Meeting
 Tue 8 Jan Summit & Thames End Branch Meeting
 Tue 15 Jan IWA Event - see below
 Fri 18 Jan Quiz Evening at Chalford - ring Jeffrey Shaw for details
 Fri 25 Jan Talk & Slide Show - see page 15
 W/E 26/27 Jan Summit & Thames End Working Weekend
 Wed 30 Jan COPY DATE for Spring TROW

Mon 4 Feb Western Branch Meeting
 Tue 12 Feb Summit & Thames End Branch Meeting
 Thu 14 Feb IWA Event - see below
 W/E 23/24 Feb Summit & Thames End Working Weekend

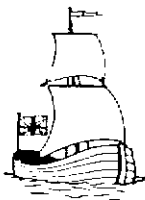
Sun 3 Mar Guided Walk - see page 15
 Mon 4 Mar Western Branch Meeting
 Tue 12 Mar Summit & Thames End Branch Meeting
 Fri 15 Mar IWA Event - see below
 W/E 30/31 Mar Summit & Thames End Working Weekend

Sat 20 Apr Stroud Street Fair
 Sun 14 Apr Cotswold Canals Challenge - see page 12
 W/E 29/30 Jun Sheffield Waterways Festival
 W/E 24/26 Aug Black Country National Waterways Festival

Western Branch volunteers work most weekends and would welcome your help. Please ring for details

IWA & FRIENDS OF THE MUSEUM EVENTS		Nat. Waterways Mus. Schools Room, Gloucester at 7.30pm EXCEPT 15 JAN 1990
Tue	18 Dec	CHRISTMAS SOCIAL - Plus the MAD Christmas light and sound spectacular. Including a sequence on the Severn Bore.
Tue	15 Jan	GLOUCESTER '90 - THE VIDEO! Our own Waterways Festival by Graham Ettles at TEWKESBURY MARINA.
Thu	14 Feb	BIRMINGHAM'S FIRST BYPASS - The Tame Valley Canal. A talk with slides by John Foley.
Fri	15 Mar	AGM Gloucestershire Branch, I.W.A.

FRONT COVER PHOTO. Here come the gates! Frank Jones and friends delivered and hung Newtown Lock gates early in October



DEPARTMENTS

MEMBERSHIP	FREEPOST (GL65)	P.O. Box 71. Stroud, Glos., GL6 7BR
PRESS & PUBLICITY	BERNARD DONOVAN	10 Mount Pleasant, Bisley Old Road, Stroud Glos., GL5 1NA (Stroud 0453 757541)
SALES MANAGER	CHRIS JONES	The Courts, 27 Walton Road, Clevedon, Avon, BS21 6AE (Clevedon 0272 875714)

SUMMIT & THAMES END BRANCH

CHAIRMAN	ROBIN HALLIDAY	16 River Park, Marlborough, Wilts. SN8 1NH (Marlborough 0672 513400)
SECRETARY	JAMES KING	Moordown, Northfield Road, Tetbury, Glos. GL8 8HE (Tetbury 0666 502797)
TREASURER	JOHN LUCAS	Linquenda, Winstone, Nr. Cirencester, Glos. GL7 7JZ (Miserden 028 582 587)

WESTERN BRANCH

CHAIRMAN	STOP PRESS	Vacant - please contact Secretary
SECRETARY	GEORGINA BAYLISS	Avonlea, 50 Stanley View, Dudbridge, Stroud, Glos. (Stroud 0453 753847)
TREASURER	DAVID BAYLISS	Avonlea, 50 Stanley View, Dudbridge, Stroud, Glos. (Stroud 0453 753847)
EVENTS ORGANISER	JEFFERY SHAW	The Cleeves, Nailsworth, Glos., GL6 0PA (Nailsworth 045383 3373)

WORKING PARTIES

WESTERN BRANCH	DOUG BLAKE	19 Stratton Road, Gloucester. (Gloucester. 0452 415843)
SUMMIT & THAMES END	ROBIN HALLIDAY	16 River Park, Marlborough, Wilts., SN8 1NH (Marlborough 0672 513400)

THE TROW

EDITOR	DAVID JOWETT	11 Upper Leazes, Stroud, Glos., GL5 1LA (Stroud 0453 755535)
--------	--------------	--