

Trow

THE OFFICIAL MAGAZINE
FOR MEMBERS AND FRIENDS
WORKING TO RESTORE THE
COTSWOLD CANALS



NO 72 SPRING 50 P
1991

COPY DATES

SPRING.....20th JANUARY
SUMMER.....20th APRIL
AUTUMN.....20th JULY
WINTER.....20th OCTOBER

THE VIEWS & OPINIONS IN
THIS MAGAZINE DO NOT
NECESSARILY REPRESENT THE
VIEWS & OPINIONS OF THE
COTSWOLD CANALS TRUST

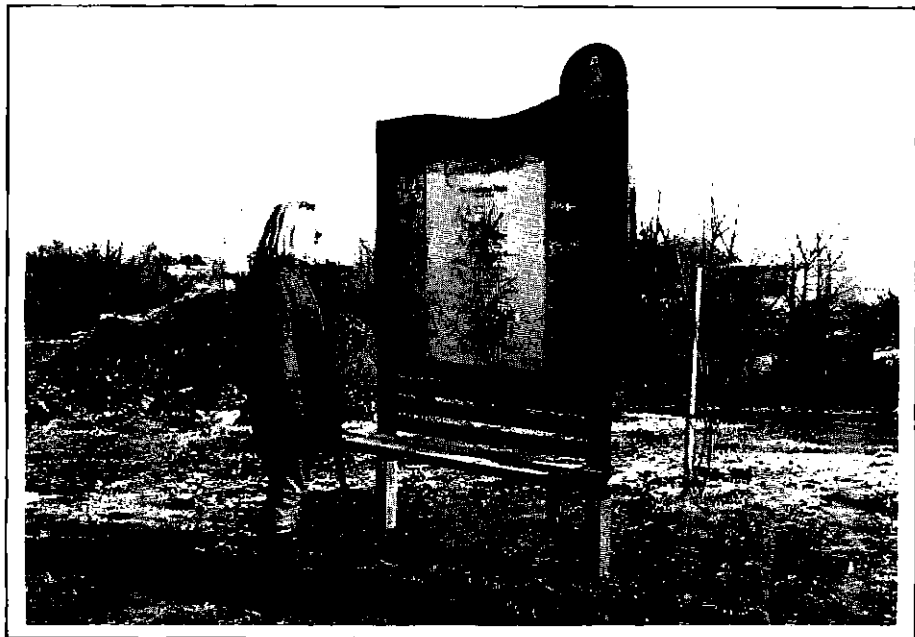
Contents

Trust Council Notes	2
Field Officer's Report	3
Enid Airy - An Obituary	4
Western Branch	5
Trip Boating '91	7
Radio "Cotswold Canals"	8
The Eastington Flight Map	10
The Year Ahead	12
Cotswold Canals Challenge	14
More Gentle Meanders	15
Thanks	16
Sales Order Form	18
Dates	19

Published by the Cotswold Canals Trust
Compilation and Layout by David Jowett
Printed by Alan Mayo, Lewiston Mill, Brimscombe, Stroud, Glos.

FRONT COVER PHOTO: Stop Press! Ken Bailey road tests a new piece of plant just acquired by the Trust - very useful, more details next time!

PHOTO BELOW: One of the new information boards financed by RoyScot. This one is on the soon-to-be-landscaped site next to Newtown Lock.



Trust Council Notes

TRUST COUNCIL REPORT

The past quarter has been as busy as ever for Trust Council members.

Work on the WS Atkins Study continues and the final report is eagerly awaited and is due early this year. Whilst at the eastern end, an all embracing study by Sir William Halcrow and Partners is about to begin. However, the eastern end study is still several thousand pounds short of its £30,000 target which will have to be raised to complete the work.

The creation of a tourist amenity area at the newly named "Eastington Wharf" will begin once the necessary planning permission has been granted. Gloucestershire County Council has kindly drawn up plans of the area, which extends from Pike Lock to Newtown Lock.

The first phase of work will see our compound and workshop moved a short distance down and across the canal to the old County Council gravel dump. This site will give us more space and is better situated to our main focus of work for the next few years at Dock Lock.

The second overlapping phase will be the landscaping of the area from Pike Lock through to Newtown Lock and the planting of large numbers of native trees and shrubs. Picnic tables and a grassy glade will complete the scene for visitors by car. Visitors with boats will be able to make use of the slipway to be constructed near Pike Lock, thanks to the generosity of the Company of Proprietors of the Stroudwater Navigation.

All this work must be complete before our next Open Day in October, so look out for appeals for volunteers to help with this work in the Summer TROW!

Bernard Donovan has fulfilled the role of Trust Secretary for the last two years during which time he masterminded the Bicentenary Dinner and celebrations. Bernard's job now makes increased and unpredictable demands on his time and he has therefore reluctantly decided to step down from the post of Trust Secretary.

The position of Trust Secretary has a fairly high clerical content and it has been decided to separate the legal requirement of a Company Secretary from the clerical work.

We are pleased that Michael Reynolds will become the Company Secretary to fulfill the legal obligations.

The Trust Council is therefore looking for a volunteer for the position of Secretarial Assistant. They must have keyboard skills and will attend Trust Council meetings together with some sub-committee meetings at Nailsworth.

Their task will be to take minutes of the meeting, to type them using a word processor (which will be supplied by the Canal Trust) and to distribute the minutes. There will also be a small amount of letter typing. Volunteers should contact Bruce Hall or Richard Attwood.

Field Officer's Report

Field Officer **KEN BURGIN**

Enough money has now come in for the first phase of the Halcrow Study to commence and this has included a generous donation of £2,500 from the I.W.A. This is important because key decisions as to whether or not a canal bridge is to be included in the Latton Bypass A419 improvements will be taken soon. The Trust has widespread backing for this bridge and the delay in getting this road scheme going has strengthened our position greatly. Local Authority support, increasing landowner interest, coupled with a much higher level of Trust activity and commitment will, I hope, encourage the Department of Transport to decide in our favour.

The Trust is still awaiting a decision on the relocation of the M.O.D. pipeline to the west of the A38. The matter has been referred to the Minister who has the distraction of the Gulf War to contend with.

Mike Handford and myself did our bit at the planning inquiry regarding gravel extraction at Roundhouse Farm, Marston Meysey. The outcome is not yet known but whatever it may be, the Trust is hopeful that agreement can be reached on the future of the canal over this site.

The Countryside Commission has announced a very interesting scheme called "Countryside Stewardship". The scheme is being run in association with English Heritage and is open to farmers and landowners. Early discussions with the Countryside Commission suggest that restoration of the canal and subsequent public access may well fall within its scope. Detailed guidelines will be published soon and the Trust would be interested to hear from any canal landowners who might like to take part.

The Trust has had a meeting with the Severn-Trent region of the National Rivers Authority. The meeting was helpful and the Trust will be working closely with them to overcome any problems associated with the restoration of the canal, land drainage and water supply.

The water pipe at Newtown Roving Bridge has sprung yet another leak. I suspect the many layers of tape are holding together a cast iron jigsaw puzzle. The date for its removal has not been confirmed yet but it may happen this summer when a new sewage pipe is laid under the canal nearby.

The Clothiers Arms

1 Bath Road . Stroud . Gloucestershire

Resident Proprietors

Luciano & Aline Magalotti



Telephone Stroud (0453) 763801

Free House

Enid Airy

Obituary by MICHAEL HANDFORD

Enid Airy died just before the New Year. She was unknown to many newer Trust members as her gradually declining health kept her away from events and functions in recent years.

When the history of the restoration is written, Enid Airy should have pride of place as the most important individual in its revival. When the odds against her were enormous and the prospects almost non-existent, she fought long and hard in the late forties and early fifties to prevent the canal being closed by Act of Parliament. She formed an informal pressure group which met at her house in Woodchester. Robert Aickman, founder of the Inland Waterways Association, was contacted, M.P.s lobbied and support garnered from every available quarter. She was the lynchpin of the small band who felt the canal could have a future. Enid Airy lost the battle, the canal was closed and she felt it deeply.

Yet Enid Airy was never one to give up or shut up when she felt right on her side. Her keen sense of justice kept her protesting publicly, privately and at canal company A.G.Ms throughout the fifties and sixties. When I first became interested in the canal in the mid 1960's, she welcomed me as a fellow campaigner, ignoring the fact I was naive and inexperienced, but an enthusiastic young man. Canal records, accommodation and food were all put at my disposal.

She was always a visionary and, with her sensitive nature, paid a heavy price when her beloved canal got less than its fair share of attention. She hated the neglect, the dereliction, the ugly lowered bridges, the mindless vandalism on what now would be carefully protected and listed structures. It symbolised for her all the bad side of English nihilism and complete lack of vision. Several times I saw her hurt by the unconcern of others who failed to share her views.

Naturally she embraced the idea of a restoration group and was one of the first members of the newly formed Stroudwater Canal Society in 1972/3. She never missed any public meetings and, with her great friend Nan or some member of her family, she invariably appeared on the sponsored walks in those early days. Her enthusiasm, her delight at such a growing public interest was heart warming.

Her health began to fail in later years but she never lost interest in "her" canal. She kept the idea of full restoration firmly before us and watched with interest as the canal society grew first into the Stroudwater Thames & Severn Canal Trust and then into the Cotswold Canals Trust. The Trust is now a healthy, vigorous and successful body with widespread public and local authority support. Serious restoration has begun all along the canals. The prospects for restoration have never been better. She was there battling away when the whole idea of restoration was a joke and she herself was mocked as an impractical eccentric.

Next time you are anywhere along the canal, give a thought for Enid Airy. She cared enough, she loved enough, she willed enough for it to survive. She was the fighter who never gave up, she was the one who inspired us in



those dark early days. Enid Airy was a visionary. She changed everyone's mind in the end, even those of a largely uninterested canal company and of then unhelpful local authorities. Who now says Enid Airy was wrong?

She would be thrilled to see the canal's revival today with restored chambers and new lock gates. I have no doubt she would be generous to those who then appeased her in the difficult days of closure and the years that followed. There was no malice, no "side" in Enid, only a huge heart, a great will and an untiring energy. We owe her a lot. Correction, we owe her everything. She endured as the opposition faded.

Somehow we should commemorate this kind, generous lady and her enormous contribution. Words are a poor substitute to convey her special quality - the sparkling smile and deep reserves of affection. Perhaps though her proper memorial is still to come - the complete restoration of her much loved canal. When it is, then only a simple plaque is required at some quiet canalside spot. The inscription is obvious: Enid Airy - if you seek her memory, look around you.

I am proud to have been her friend.

Western Branch

Report by KEN BAILEY

Work over the past few months has been fairly restricted by both inclement weather and a lack of people. Despite that we have some progress to show with the culvert under the towpath above Pike Lock being completely rebuilt and a considerable area of Ken Burgin's driveway being dug up to see the extent of the damage to the overflow weir's structure. The problems in this area were less than we had first thought in that the culvert running away from the rear of the overflow passes on the road side of both Ken's septic tank and the house. The arches of the weir appear to have been damaged as the result of a previous owner of Pike Cottage digging a trench to put in water and electricity to outbuildings.

The back of the archways have been cleared of roots and accumulated debris, not a pleasant task sliding in through the 12" high arch into the three foot high gully behind. The undamaged part of the structure is in very good condition and it is possible to see about 50 feet down the culvert towards Dock Lock. A number of sycamore trees had to be removed from above the arches as their roots were forcing their way through the bricks. The arches are now being rebuilt and will be covered by a layer of concrete before the driveway is reinstated. Using the Sykes 4" pump, we have pumped a large quantity of water down the overflow to check that it was clear and were pleased to see exactly where it emerged on the other side of the Eastington road.



The bank on the Dock Lock side of the Eastington road was cleared by a visiting youth group from Tuffley near Gloucester and the pollarding of the willows below Dock Lock has been continued led by Richard Attwood and Bruce Hall with help from others including new member Mary Walters. Francis Turner's group fought their way through December snow to get to us for their annual visit and continued work on the Meadow Mill weir. Meadow Mill brickwork and some silt removal from Blunder Lock were carried out by the "Newbury" Work Party who provided about 15 people for a weekend.

The brickwork replacement by contractors at Pike Lock is almost complete with just the top wing walls to finish off. The barge by Nutshell Bridge was pumped out on a cold wet first Saturday in January and the following day secured in a position where it is hoped that the local vandals will not be able to cast it adrift!

Due to various demands on my time canal-wise, I will no longer be involved in organising work on the canal at Eastington. Instead I am going to concentrate my own efforts, with the assistance of Bill Evill and hopefully a few new faces (?) on repairing and repainting our dredging fleet which has been sadly neglected over the years.



The Spill weir above Pike Lock.

Was the cat white when it went in?

Trip Boating '91.

Trip Boat Co-ordinator **AMANDA FISK**

This year will see the continuation of trip boat operation on the canals. However there will be some changes to last year's format with the aim of improving the enjoyment for customers and crew alike.

The double steel boats, which seat 12 passengers each, will operate once again on the Ryeford stretch of the canal. From the central pick-up point at Ryeford Wharf, close to the swing bridge, this attractive route stretches up to the cycle track Skew Bridge in one direction and to Ryeford double locks in the other.

Ideally a crew of four will be required for each Sunday and Bank Holiday from Easter through to October. In order to attract you to participate in this Trust activity which does not require any hard work, just your time, several improvements are being made.

- The steering position on the boat is being adjusted to make operation more comfortable
- The boats will be freshly cleaned and painted in preparation for the new season
- A rota for crewing will be drawn up well in advance, with crew members choosing on which Sundays they are available
- Full instruction in operating the boats will be given, including all important passenger and crew safety.
- Leaflets etc. will be provided to help you answer questions about the journey and the canal in general.

Trip boats are one of the public faces of the Cotswold Canals Trust. It is vital to use those parts of the canal which are 'open' in order to promote their use. From my own experience it is a very satisfying venture to put people on the canal and witness their enjoyment of the canal environment.

I am aware that a group of people came forward last year to help but for one reason or another didn't make it to the Boat Trips - I should be very pleased to hear from you this year. If you are a potential "new" volunteer and think that you may be interested in assisting with the trip boats in any way, please contact me on Stroud (0453) 755535.

Copy Date

Contributors please note! The copy date has been brought forward from the 30th to the 20th of January, April, July & October. The next date to watch is therefore **20 April**. Miss it at your peril!

- **DAVID JOWETT**

Radio "Cotswold Canals"

Radio Gloucestershire Presenter BRIAN BAILEY

"Hello, I am Brian Bailey and I would like you to accompany me, along with Richard Attwood, as we explore the Cotswold Canals. From the comfort of your armchair join us here at Radio Gloucestershire every Sunday morning at 9 o'clock in the Gloucestershire Country Matters programme, and together we will search out the secrets of this beautiful waterway."

You may or may not have heard the above trail broadcast on the local Gloucestershire B.B.C. radio station over the last two months, advertising the fact that Richard and myself are walking and recording along the canal towpath.

I have been asked to explain just how I go about putting together this item for the programme. Well, starting from the very beginning, Richard and I sat down one evening and planned just how many parts we thought it would need to cover the canals from Framilode to Inglesham. Fifteen seemed to be the answer, taking into account all we had to fit in along the way. We decided next that a walk plus an in depth item on canals should alternate each week and this then is the format we are carrying out.

Moving on to the recording itself, all the original material for the section comes from Richard and is recorded by me. For the more technical people this is on a B.B.C. Uher 4000 Report Monitor at 7½ inches per second, reel to reel. Once this is done I then have the time honoured task



Richard Attwood (right) gets the third degree from Brian Bailey



of fitting a quart into a pint pot, for even on these very short stretches of canal it is not unusual to come away with fifteen to twenty minutes of tape, which I have to reduce to around six minutes for the programme slot. To achieve this firstly I make a copy tape, and keeping the master in a safe place, proceed to literally cut pieces out with a razor blade and splice back together what I hope portrays the essence and flavour of that section of canal.

Once I have achieved my quota time the tape is checked and adjusted electronically for pitch and volume. Satisfied with this, it is boxed and labelled for the programme in which it is to be broadcast. I may take out small clips to incorporate in trails (short for trailers) to advertise what is going in the particular programme that week. Last, but not least, I write information for the presenter to introduce the item. This will no doubt include some of the facts that I have unfortunately had to omit when condensing the original material.

With the recording, writing and editing time the six minute broadcast will on average have taken something like four hours work. I only hope in all this I can do justice to the canals and all those who are working for their restoration.

Any items or suggestions from members to be included would be most welcome, and by the way, if you are not already listening to the programme you will find us on B.B.C. Radio Gloucestershire every Sunday morning at 9 o'clock on 104.7 FM or 603 KHZ Medium Wave.



Meanwhile, back in the studio, the cutting room floor awaits!

The Eastington Flight

Map by DAVID JOWETT

Of all the comments I receive about The TROW, the most common is a request for maps and diagrams not only to show locations of worksites but also to explain what the Trust is doing. As a first step here is a representation of the Eastington Flight which gives a fair impression of the location but is not to a strict scale.

Ken Bailey has described what is to be tackled this year in his article on page 12. The remainder of the numbered features are explained here:-

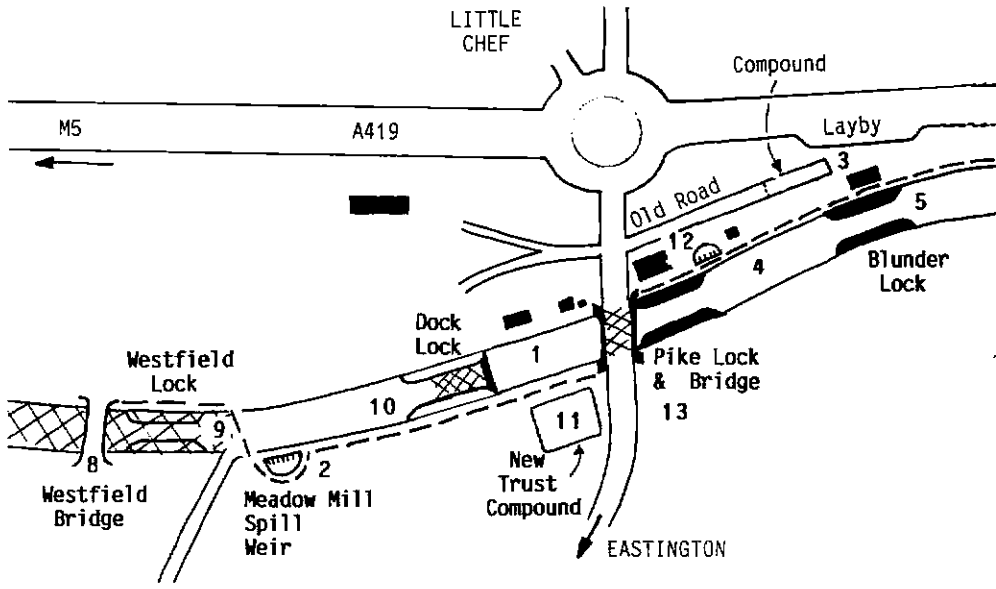
8) Westfield Bridge is in good condition but stands over the end of the section infilled through the M5.

9) Westfield Lock is completely infilled and although it is not certain what lies beneath, the outline of the lock was clearly visible in scorched grass on the site last Summer.

10) Dock Lock was partially excavated by a Waterways Restoration Group Summer work camp in 1989 - the remainder will be tackled by a contractor.

11) The new Trust compound site should offer neater, more convenient accomodation (with electricity!?) whilst leaving the old, more prominent site (3) free for landscaping (Both new and old awaiting planning permission).

12) Pike Lock Cottage and Spill weir which still appears to successfully deliver overflowing water from this pound down to the pound below





13) Pike Lock and Bridge. The lock structure is almost complete after rebuilding but the bridge will require reinstatement.

14) The site next to Newtown Lock is due to be landscaped once planning permission is received. Together with the site next to Blunder Lock, this will provide an excellent amenity for locals and visitors alike. Information boards financed by RoyScot Finance (now RoyScot Trust) can be found on these sites.

15) Newtown bridge is sound after some repairs were carried out by Trust workers many years ago.

16) A water pipe passes over the canal at low level and the Trust hopes that this obstacle to navigation will soon be removed.

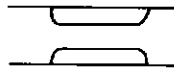
KEY



Lock structure complete and gates fitted



Lock structure complete



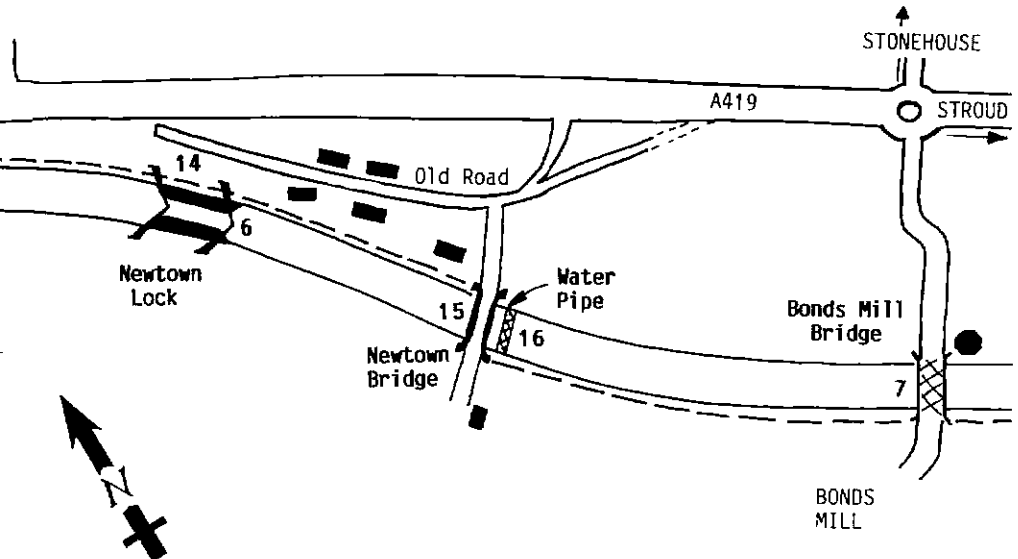
Lock walls require rebuilding or repair



Towpath



Infilled section or obstacle



The Year Ahead

Report by KEN BAILEY

Just before Christmas, the Trust's "Planning Sub-committee" met to discuss progress during 1990 and the work proposals for 1991. After a long evening, a list was drawn up to be presented to the full Trust Council for their approval. The results of these meetings are summarised here. If any reader has any comments on items they feel are missing, questions as to why certain things are proposed or suggestions for next year, then please contact me and I will present your points to future meetings.

Again, we are working to the Five Year Plan in the Eastington area and the list also includes items in the Summit & Thames End areas. The first 7 paragraphs are numbered to show their location on the map on page 10.

1) The pound above Dock Lock is to be cleared of fish and drained down before the dam across the top of the lock is removed and the rest of the infill excavated from the chamber. Once drained the remains of the old Stroudwater ice-breaker can be examined and removed, the entrance to the old Dry Dock can be cleared and properly dammed off to prevent flooding of the adjacent landowners yard. The banks on both sides of this pound can also be tidied up and reinforced as required. This work will not be started until the middle of the year as access to lock side for plant is restricted. It is not intended to re-brick the chamber until the following year which will give volunteers a chance to carry out preparation work. This also means that the work required will be visible to contractors who may be asked to quote. The re-bricking will take place during Spring/Summer and it may even be judged to be a task for a regular visiting work party - all things we have learned from our experiences with Pike Lock.

2) Meadow Mill spill-weir is an ongoing project as is the completion of the willow tree pollarding. It is also proposed to widen and reinforce the towpath up to Dock Lock so as to improve access.

3) The compound is to be moved (to 11) and the old compound location landscaped - these tasks are awaiting planning permission to be sorted out.

4) A slipway is to be constructed above Pike Lock.

5) The second top gate for Blunder Lock is to be constructed along with a set of paddle gear. Both can then be hung and fitted. It is also intended to excavate the remaining silt from Blunder Lock chamber and place orders for Bottom Gates. The lower wing walls and spill-weir outlet also require repainting or rebuilding.

6) The head wall of Newtown Lock needs to be stripped back, re-bricked and concrete back-filled and ground paddle gear fitted before the lock can be put into use.

7) Enquiries are in hand as to the possibility of fitting a new swing or lift bridge at Bonds Mill.

The dredging fleet is to be re-painted and put back into working order.



The towpath in the Dudbridge area is to be tidied up once the new road bridge there has been completed

Beales Lock requires a weekend's tidy up and some bank repair work has to be carried out in the same area

A sum of money has been allocated to pay for the rebuilding of a section of drystone wall in the Puck Mill area which has been the subject of a long running dispute.

Up at the Daneway entrance to the Tunnel, the canal bed needs clearing and it is hoped that a sponsor can be found to finance the repair of the Daneway portal.

During the Summer months, work has to be carried out in the Tunnel at the Coates end to repair the holes in the concrete lining which should serve to prolong the length of time we are able to run the very profitable trip boat operation next Winter. The soil dam across King's reach also has to be removed.

Work will continue at Coates Round house where it is hoped that a temporary roof can be fitted and general structural repairs undertaken.

By the time you read this, the initial clearance of the middle two locks in the Siddington Flight should have taken place, exposing the areas of brickwork such as the top gate recesses and chamber walls which need repair.

Sponsors are also currently being sought to finance the repair of Cowground Bridge near Siddington which is currently in a dangerous condition

The final item on the list is the repair of Wilmoreway Bridge which is also in very poor condition.

That more or less covers the planned work along the canals for the coming year. Obviously we are very much dependent on support from the Company of Proprietors of the Stroudwater Navigation, Local and County Councils, Landowners, Companies and individuals who support the Trust's aims and of course the volunteers who come along not only to work but to promote the canals generally.

THE COTSWOLD CANALS - WITHOUT GETTING YOUR FEET WET!!

Don't miss the illustrated "ALONG THE COTSWOLD CANALS" talks which are taking place along the Cotswold Canals this year. Details will be publicised locally but some of the first dates can be found on page 19.

Cotswold Canals Challenge



Canoe & Run



A new event comes to Stroud on the Sunday 14th April, the result of a joint effort between the **Cotswold Canals Trust** and **A.D.J. Canoe Club**.

The **COTSWOLD CANALS CHALLENGE** is a **BIATHLON** over nine miles combining canoe skills with straightforward running.

Competitors will leave the Far Hill car park in Stroud at staggered intervals to make their way on foot, against the clock, down the towpath of the Stroudwater Navigation. The canoes await their owners at Ryeford from where the event takes to the still waters of the canal.

Several portages face the competitors before they turn at Eastington to tackle the return route.

Presenting the prizes back in Stroud will be Peter Gadsden, Chairman of the Company of Proprietors of the Stroudwater Navigation.

This will most definitely be both a competitive and "fun" event and hopefully will develop into a canoe marathon from the River Thames to Severn much like the famous Devizes to Westminster race.

An encouraging amount of interest has already been shown but further details, together with entry forms and rules can be obtained from:-

- 1) Chris or Sally Jones, 27 Walton Road, Clevedon, Avon., BS21 6AE
Telephone 0272 875714 (for Cotswold Canals Trust).
- 2) John or Veronica Westlake, 33 Golden Vale, Churchdown, Gloucester
Telephone Gloucester 0452 855902 (for A.D.J. Canoe Club).

Stroudwater Cottage

Available for Weekends
Midweek Breaks Longer Lets

Very Well Appointed
Sleeps 4/5



Close to the Canal near Stonehouse

Telephone 0455 611508
for details

A DONATION TO THE TRUST WILL BE MADE FOR EACH BOOKING RECEIVED AS A RESULT OF THIS ADVERT. PLEASE MENTION THE TROW.

More Gentle Meanders

Walk Guide RICHARD ATTWOOD

The gentle Sunday meanders continue in 1991. Record these dates in your diary now!

Sunday 3rd March - 2:00pm - Meet at Sapperton Church (OS 948033) to explore the village and its canal. A two mile up and down walk.

Sunday 7th April - 2:00pm - Meet at the Cotswold Water Park Information Point (OS 072972) to visit Boxwell Lock. A two mile level walk.

Sunday 5th May - 2:00pm - Meet at Siddington Playing Field (OS 031998) to explore the Siddington Flight and the Cirencester Arm. A two mile level walk.

Sunday 2nd June - 2:00pm - A visit to the Black Gutter and St Mary's Mill meeting at Chalford Round House (OS 893025). A two mile up and down walk.

Sunday 7th July - 2:00pm - A visit to the Lonely Lock at Eisey, subject permission from the landowner. Meet at the River Thames in Cricklade (OS 098947) for a three mile walk.

Sunday 4th August - 2:00pm - Meet at the cycle trail car park (OS 806048) to visit Ryeford and the Ocean. A level two mile walk.

THE END TO END WALK PART 1 Sunday 15th September

THE END TO END WALK PART 2 Sunday 22nd September

THE END TO END WALK PART 3 Sunday 29th September

Membership Matters

Membership Secretary RICHARD ATTWOOD

This time we are pleased to welcome the following new members:-

Mr JG Stark, Cirencester
Mr AP Smart, Kidderminster
Mr AC Hopkins, Highnam, Glos
Mr MD Hughes, Stonehouse
Mr RW Mills, Tewkesbury
Mr RA Sheekey, Tetbury
Mr DR Lewis, South Cerney
Mr JF Fielder, Alton
Mr DR Stockwell, Portishead
Mr JM Langley, Ebley
Mr SE Ballard, Cirencester
Mr MJ Gardner, North Woodchester
Mr H Steele, Siddington
Mr P Wilks, Evesham

Mr WL Nicholson, Princes Risborough
Mr MFE Blackwell, Northleach
Mrs P Stevenson, East Hendred
Miss SA Norman, Cirencester
Mr M McInnes, Stonehouse
Miss Julie Hyde, Faringdon
A & R Hoida, Portishead
Mrs H Parry, Sutton Coldfield
Mr R Bingham, Welling, Kent
Miss MJ Walters, Frampton on Severn
Mr J Barrett, Cirencester
Mrs P A Kettle, Cirencester
Newbury WPG, Berks
Thrupp Canal Cruising Club, Oxfordshire

Thanks

The "Imperial Hotel" in Stroud has done it again! - or rather Sue and Ralph Robinson have, together with the help of their staff. Once again their fund raising efforts have benefited the Trust, this time with the presentation of a professional-quality slide projector.

The equipment was soon put to good use at an illustrated "Along the Cotswold Canals" presentation, to 60 people at the Subscription Rooms in Stroud back in January.

Thanks are due to Sue and Ralph and their staff as well as the Imperial regulars. Pictured here are Sue and Ralph Robinson presenting the projector to Richard Attwood. Incidentally, Trust members were treated to a magnificent buffet at the "Imperial" on the presentation evening, and our thanks go to Sue and Ralph for that too!



During the last few months the Trust has received a number of donations.

The "Shell Better Britain Campaign has given us a cheque for £300 towards our efforts after visiting our worksite at Eastington during the Autumn.

One of our members, John Sayle, has also made considerable donations in the form of large numbers of items which he has collected over the years. Amongst the larger items is a motorised stone saw, 2000 large roof tiles for us to sell (anyone interested?), and a Series II Landrover. The Landrover needs a new chassis but apart from that should make a good workhorse especially as it is fitted with a hydraulic drum winch.

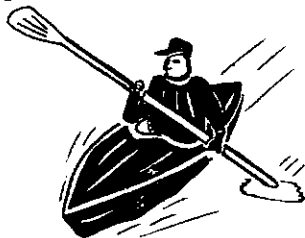
Our thanks go to Shell and John Sayle who have helped make our task that much easier!

Cotswold Canals Challenge

A BIATHLON



Canoe
& Run



From Stroud to Eastington & back to Stroud
Both a competitive and fun event

SUNDAY 14th APRIL 1991

Short course for the under 14's

Entry fee £2.00 per person

For details, entry form & rules contact:

*Cotswold Canals
Trust*

Chris or Sally Jones.
27 Walton Road.
Clevedon, Avon. BS21 6AE

(0272)875714



A.D.J. CANOE CLUB



John or Veronica Westlake.
33 Golden Vale.
Churchdown, Gloucester.

(0452)855902

Sales Order Form

ITEM	PRICE £	QTY
*Around the Cotswold Canals (10 Circular Walks)	2.00	
*Restoring the Cotswold Canals	0.50	
Canal Barges & Narrow Boats (Peter L. Smith)	1.75	
Canals & Waterways (Michael E. Ware)	3.95	
Craft of the Inland Waterways (D.J. Smith)	1.95	
Discovering Canals in Britain (Peter L. Smith)	2.50	
The Flower of Gloster (E. Temple Thurston)	6.95	
The Stroudwater Canal - Vol 1 (Michael Handford)	3.50	
S.T&S Canals in Old Photographs (E. Cuss & S. Gardiner)	6.95	
S.T&S Canals Towpath Guide (M. Handford & D. Viner)	7.50	
Thames & Severn Canal (Humphrey Household)	6.95	
Thames & Severn Canal (David Viner)	3.80	
Working Life on Severn & Canal (Hugh Conway-Jones)	7.95	
*The TROW - All issues available	0.30	
*TROW Binder - Holds 12 issues - suitable for all A5 mags.	3.25	
*Map - plan and section of Cotswold Canals	2.50	
<hr/>		
*Sweater - with embroidered logo	S M L XL	14.00
*Sweatshirt - with embroidered logo	S M L XL	13.00
*Sweatshirt with printed logo	S M L XL	10.00
*Tennis/Sport Shirt - with embroidered logo	S M L XL	12.00
*T-Shirt - with printed logo	S M L XL	4.50
*Baseball Hat - with printed logo		3.75
*Sew-on Badge - with embroidered logo		2.50
<hr/>		
*Book mark		0.50
*Car Sticker - "May your silt disperse and puddle thicken!"		0.40
*Comb in case		0.40
*Mending kit		0.30
*Pen		0.30
*Pencil with eraser		0.25
Plant pot - hand painted with canal roses		0.95
*Sketch pad (Medium)		0.75
*Sketch pad (Large)		1.00
Thimble - Round house		3.00
Thimble - Buckby can		3.00
*Thimble - Cotswold Canals Trust		1.50
*Standard Mug		3.30
*Half Pint Tankard		4.00
*Pint Tankard		6.20
<hr/>		
*DENOTES SPECIAL COTSWOLD CANALS TRUST ITEM	TOTAL	£ .
Please state quantities required, and send with your remittance to:	POSTAGE & PACKING	£ 0 . 5 0
CHRIS JONES - SALES MANAGER, THE COURTS, 27 WALTON ROAD, CLEVEDON, AVON, BS21 6AE. (Telephone 0272 875714)	TOTAL VALUE OF ORDER	£ .
Please make cheques payable to "COTSWOLD CANALS TRUST".		

Dates for your Diary

Sun	3 Mar	Guided Walk - see page 15
Mon	4 Mar	Western Branch Meeting
W/E	9/10 Mar	WRG BITM Visiting Working W/E (Summit & Thames End)
Tue	12 Mar	Summit & Thames End Branch Meeting
Fri	15 Mar	Slide Show (Siddington Village Hall, postponed from 8 Feb)
Fri	15 Mar	IWA Event - see below
Mon	25 Mar	Slide Show (South Cerney Scout Hut 7.30pm)
W/E	30/31 Mar	Summit & Thames End Working Weekend
Sun	7 Apr	Guided Walk - Cotswold Water Park see page 15
Mon	8 Apr	Western Branch Meeting
Tue	9 Apr	Summit & Thames End Branch Meeting
Sun	14 Apr	Cotswold Canals Challenge - see page 14'
Sat	20 Apr	Stroud Street Fair - (Sales Roadshow attending)
Sat	20 Apr	SUMMER TROW COPY DATE!!!
Fri	26 Apr	Slide Show (Lechlade Memorial Hall 7.30pm)
W/E	4/5/6 May	K&A Newbury Visiting Working W/E (Eastington area)
Sun	5 May	Guided Walk - Siddington see page 15
Mon	13 May	Western Branch Meeting
Tue	14 May	Summit & Thames End Branch Meeting
Fri	17 May	Quiz Evening - contact Jeffery Shaw
Sun	2 Jun	Guided Walk - The Black Gutter see page 15
Mon	3 Jun	Western Branch Meeting
Tue	11 Jun	Summit & Thames End Branch Meeting
W/E	29/30 Jun	Sheffield Waterways Festival (Sales Roadshow attending)
W/E	29/30 Jun	Summit & Thames End Branch Meeting
Sat	20 Jul	Le BARBECUE chez Jeffery & Jane (tel: 0453 833373)
W/E	24/26 Aug	Black Country National Waterways Festival (Sales Roadshow)
Fri	27 Sep	Skittles evening - contact Jeffery Shaw
Suns in	Sep	15 & 22 & 29 The End to End Walk

Western Branch volunteers work most weekends and would welcome your help. Please ring for details or call in at Eastington (see map page 10). Summit & Thames End Branch work at least the dates listed above. Please ring for details of extra working dates.

Members and friends are welcome at Branch Meetings. Why not come to the next one or perhaps try one of the special events first? If you would like to offer your help for any of the above events, please contact the appropriate person listed on page 20.

IWA & FRIENDS OF THE MUSEUM EVENTS

Nat. Waterways Mus. Schools Room,
Gloucester at 7.30pm

Fri	15 Mar	A.G.M. (IWA Gloucestershire Branch)
Tue	16 Apr	Another SEVERN SCRAPBOOK by Fred Rowbotham
Tue	21 May	A.G.M. (Friends of the National Waterways Museum) followed by vintage films from the Museum's collection.

Cotswold Canals Trust



DEPARTMENTS

MEMBERSHIP	FREEPOST (GL65)	P.O. Box 71. Stroud, Glos., GL6 7BR
PRESS & PUBLICITY	BERNARD DONOVAN	10 Mount Pleasant, Bisley Old Road, Stroud Glos., GL5 1NA (Stroud 0453 757541)
SALES MANAGER	CHRIS JONES	The Courts, 27 Walton Road, Clevedon, Avon, BS21 6AE (Clevedon 0272 875714)

SUMMIT & THAMES END BRANCH

CHAIRMAN	ROBIN HALLIDAY	16 River Park, Marlborough, Wilts. SN8 1NH (Marlborough 0672 513400)
SECRETARY	JAMES KING	Moordown, Northfield Road, Tetbury, Glos. GL8 8HE (Tetbury 0666 502797)
TREASURER	JOHN LUCAS	Linquenda, Winstone, Nr. Cirencester, Glos. GL7 7JZ (Miserden 028 582 587)

WESTERN BRANCH

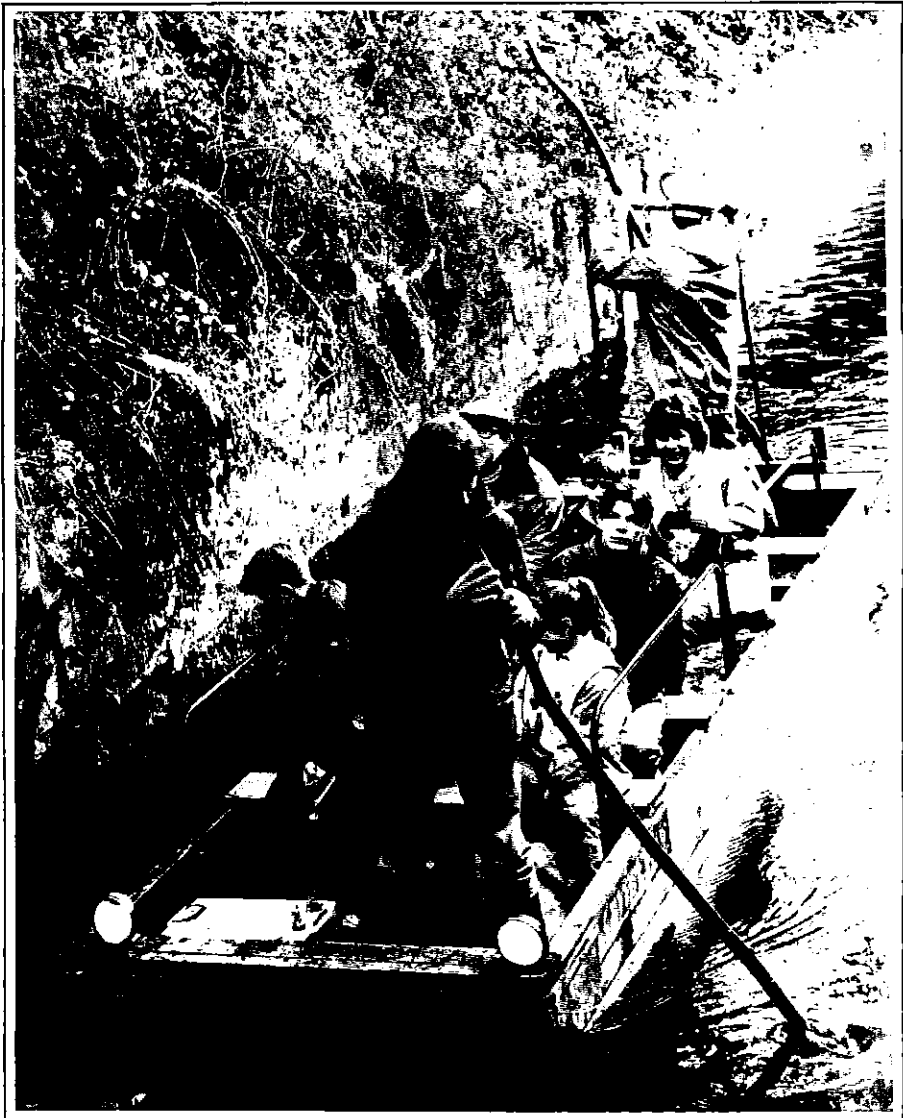
SECRETARY	GEORGINA BAYLISS	Avonlea, 50 Stanley View, Dudbridge, Stroud, Glos. (Stroud 0453 753847)
TREASURER	DAVID BAYLISS	Avonlea, 50 Stanley View, Dudbridge, Stroud, Glos. (Stroud 0453 753847)
EVENTS ORGANISER	JEFFERY SHAW	The Cleeves, Nailsworth, Glos., GL6 0PA (Nailsworth 045383 3373)

VOLUNTEER GROUPS

WESTERN BRANCH	DOUG BLAKE	19 Stratton Road, Gloucester. (Gloucester. 0452 415843)
SUMMIT & THAMES END	ROBIN HALLIDAY	16 River Park, Marlborough, Wilts., SN8 1NH (Marlborough 0672 513400)
PLANT REPAIR	KEN BAILEY	109 Willis Road, Kingswood, Bristol, BS15 4SE (Bristol 0272 601710)
TRIP BOATS	AMANDA FISK	11 Upper Leazes, Stroud, Glos., GL5 1LA (Stroud 0453 755535)

THE TROW

EDITOR	DAVID JOWETT	11 Upper Leazes, Stroud, Glos., GL5 1LA (Stroud 0453 755535)
--------	--------------	---



The boat trips into Sapperton Tunnel had a very successful season this year. The water levels will probably be too low by the time you read this but we will be back next Winter. Much credit is due to the volunteers who crewed the boat and who drew some interesting people to the tunnel - yes that is Pam Ayres about to disappear through Coates Portal.
